

(CONTINUED ON FOLLOWING PAGE)

NOTE: Chart not to scale.



DEPARTURE ROUTE DESCRIPTION

TAKEOFF RUNWAY 15: Climb on heading 149° to 600, then climbing right turn on heading 201°. Thence. . . .

TAKEOFF RUNWAYS 25L/R: Climb on heading 254°. Thence. . . .

TAKEOFF RUNWAY 33: Climb on heading 329° to 600, then climbing left turn on heading 301°. Thence. . . .

. . . . expect RADAR vectors to assigned route or depicted fix. Maintain 4000. Expect further clearance to filed altitude within 10 minutes after departure.

AK, 25 JAN 2024 to 21 MAR 2024

AK, 25 JAN 2024 to 21 MAR 2024

FFITZ FOUR DEPARTURE (RNAV)
(FFITZ4,FFITZ) 01FEB18

TED STEVENS ANCHORAGE INTL (ANC) (PANC)
ANCHORAGE, ALASKA

D-ATIS
135.5
CLNC DEL
119.4 323.1
GND CON
121.9 338.25
ANCHORAGE TOWER
118.3 257.8
ANCHORAGE DEP CON
118.6 290.5

**TOP ALTITUDE:
10000**

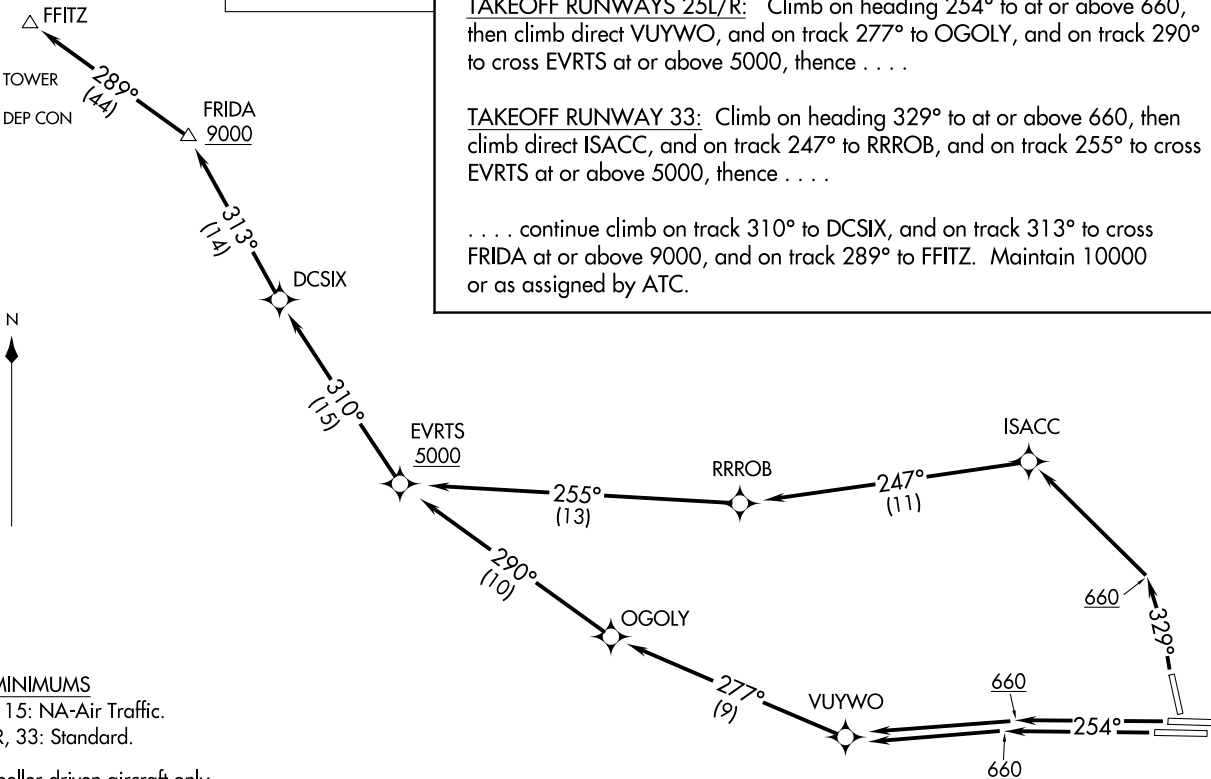


DEPARTURE ROUTE DESCRIPTION

TAKEOFF RUNWAYS 25L/R: Climb on heading 254° to at or above 660, then climb direct VUYWO, and on track 277° to OGOLY, and on track 290° to cross EVRTS at or above 5000, thence

TAKEOFF RUNWAY 33: Climb on heading 329° to at or above 660, then climb direct ISACC, and on track 247° to RRROB, and on track 255° to cross EVRTS at or above 5000, thence

. . . . continue climb on track 310° to DCSIX, and on track 313° to cross FRIDA at or above 9000, and on track 289° to FFITZ. Maintain 10000 or as assigned by ATC.



TAKEOFF MINIMUMS
Rwys 7L/R, 15: NA-Air Traffic.
Rwys 25L/R, 33: Standard.

- NOTE: Propeller-driven aircraft only.
- NOTE: GPS required.
- NOTE: RADAR required.
- NOTE: RNAV-1.

NOTE: Chart not to scale.

(FFITZ4,FFITZ) 18032
FFITZ FOUR DEPARTURE (RNAV)

TED STEVENS ANCHORAGE INTL (ANC) (PANC)
ANCHORAGE, ALASKA

KNIK THREE DEPARTURE

TED STEVENS ANCHORAGE INTL (ANC) (PANC)
AL-1500 (FAA) ANCHORAGE, ALASKA

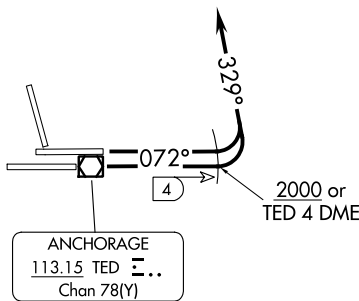
**TOP ALTITUDE:
FL200**

ANCHORAGE DEP CON 118.6 290.5
D-ATIS 135.5
CLNC DEL 119.4 323.1
GND CON 121.9 338.25
ANCHORAGE TOWER 118.3 257.8

TALKEETNA
116.2 TKA Chan 109

BIG LAKE
112.5 BQG Chan 72

△ NODLE
13700



ANCHORAGE
113.15 TED Chan 78(Y)

NOTE: RADAR required.
NOTE: Aircraft cleared via NODLE FIX
cross at or above 13700 for terrain.

TAKEOFF MINIMUMS

Rwys 15, 25L/R, 33: NA-ATC.
Rwy 7L: Standard with minimum climb of 253' per NM to 400.
Rwy 7R: Standard with minimum climb of 285' per NM to 400.

NOTE: Chart not to scale.



DEPARTURE ROUTE DESCRIPTION

TAKEOFF RUNWAYS 7L/R: Climb heading 072° to 2000 or TED 4 DME, whichever comes first, then climbing left turn heading 329° for vectors to assigned route or fix. Maintain FL200 or assigned altitude, expect filed altitude 10 minutes after departure.

All aircraft, climb as rapidly as practical through 3000, if unable to reach 2000 by TED 4 DME advise ATC prior to departure.

KNIK THREE DEPARTURE

ANCHORAGE, ALASKA
TED STEVENS ANCHORAGE INTL (ANC) (PANC)

NOEND FOUR DEPARTURE (RNAV) (NOEND4.NOEND) 01 FEB 18
ANCHORAGE, ALASKA
TED STEVENS ANCHORAGE INTL (ANC) (PANC)

D-ATIS
135.5
CLNC DEL
119.4 323.1
GND CON
121.9 338.25
ANCHORAGE TOWER
118.3 257.8
ANCHORAGE DEP CON
118.6 290.5

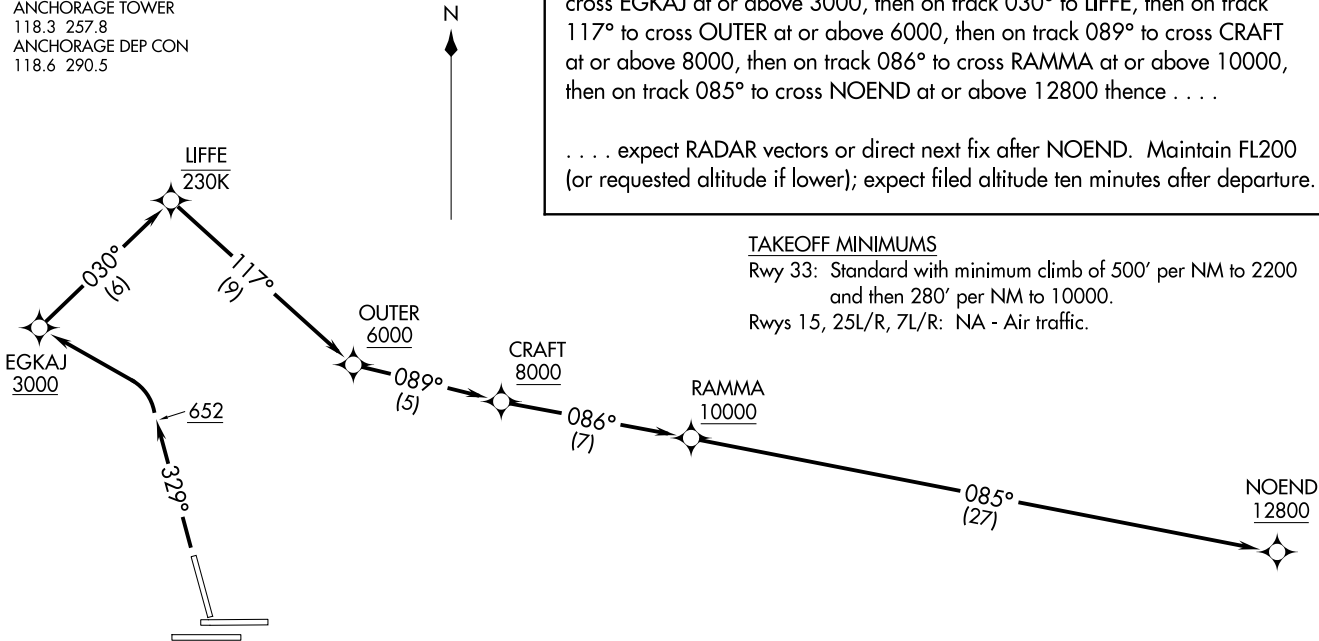
**TOP ALTITUDE:
FL200**

DEPARTURE ROUTE DESCRIPTION

TAKEOFF RUNWAY 33: Climb heading 329° to 652, then left turn direct to cross EGKAJ at or above 3000, then on track 030° to LIFFE, then on track 117° to cross OUTER at or above 6000, then on track 089° to cross CRAFT at or above 8000, then on track 086° to cross RAMMA at or above 10000, then on track 085° to cross NOEND at or above 12800 thence

. . . . expect RADAR vectors or direct next fix after NOEND. Maintain FL200 (or requested altitude if lower); expect filed altitude ten minutes after departure.

TAKEOFF MINIMUMS
Rwy 33: Standard with minimum climb of 500' per NM to 2200 and then 280' per NM to 10000.
Rwys 15, 25L/R, 7L/R: NA - Air traffic.



NOTE: Chart not to scale.

- NOTE: GPS required.
- NOTE: RNAV-1.
- NOTE: RADAR required.
- NOTE: Do not exceed 230K until passing LIFFE.

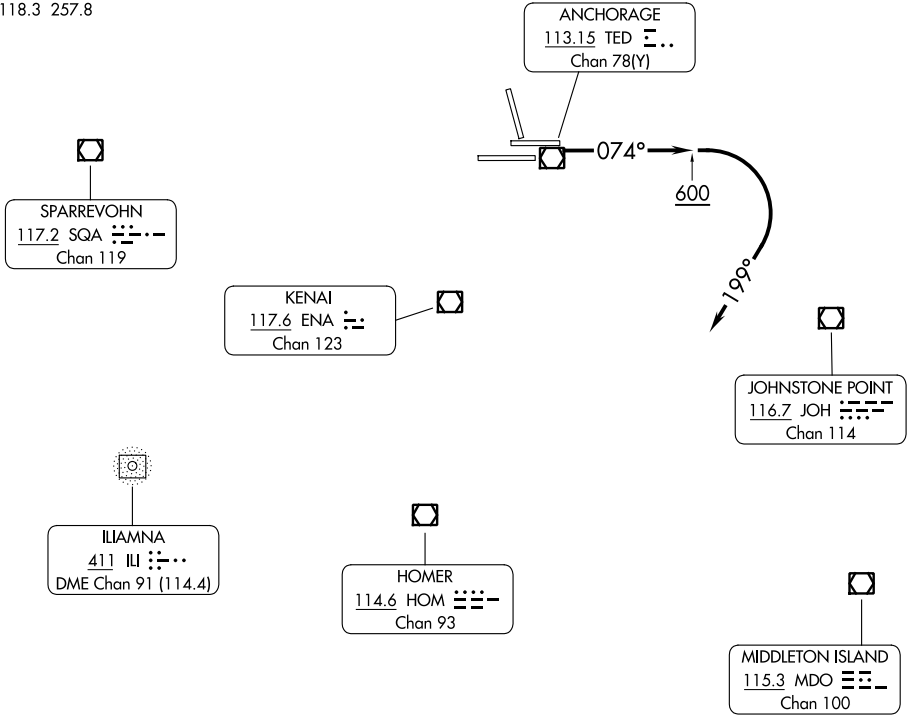
NOEND4.NOEND) 18032
NOEND FOUR DEPARTURE (RNAV) (NOEND4.NOEND) 01 FEB 18
ANCHORAGE, ALASKA
TED STEVENS ANCHORAGE INTL (ANC) (PANC)
AL-1500 (FAA)

POTTER ONE DEPARTURE

TED STEVENS ANCHORAGE INTL (ANC) (PANC)
AL-1500 (FAA) ANCHORAGE, ALASKA

ANCHORAGE DEP CON
126.4 270.25
D-ATIS
135.5
CLNC DEL
119.4 323.1
GND CON
121.9 338.25
ANCHORAGE TOWER
118.3 257.8

**TOP ALTITUDE:
4000**



TAKEOFF MINIMUMS

Rwy 7L: 300-1½ or standard with minimum climb of 255 feet per NM to 400.

Rwy 7R: 300-1 or standard with minimum climb of 285 feet per NM to 400.

NOTE: RADAR required.

NOTE: Maximum procedure airspeed limited to 200K.

NOTE: Chart not to scale.

DEPARTURE ROUTE DESCRIPTION

TAKEOFF RUNWAYS 7L/R: Climb heading 074° to 600, then climbing right turn on heading 199°. Thence . . .

. . . expect RADAR vectors to assigned route or depicted fix. Maintain 4000.

Expect further clearance to filed altitude within 10 minutes after departure.

POTTER ONE DEPARTURE

TURNAGAIN EIGHT DEPARTURE

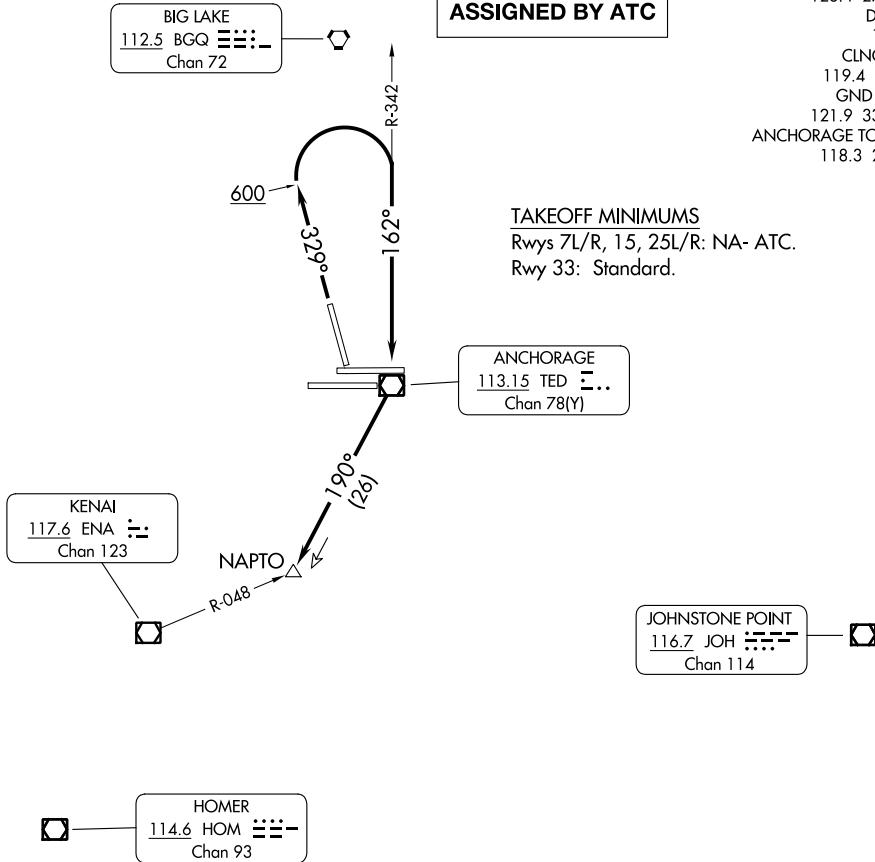
TED STEVENS ANCHORAGE INTL (ANC) (PANC)
AL-1500 (FAA) ANCHORAGE, ALASKA

**TOP ALTITUDE:
ASSIGNED BY ATC**

ANCHORAGE DEP CON 126.4 270.25
 D-ATIS 135.5
 CLNC DEL 119.4 323.1
 GND CON 121.9 338.25
 ANCHORAGE TOWER 118.3 257.8

TAKEOFF MINIMUMS

Rwys 7L/R, 15, 25L/R: NA- ATC.
Rwy 33: Standard.



NOTE: RADAR required.

NOTE: Do not exceed 200K until TED VOR/DME.

NOTE: Chart not to scale.

DEPARTURE ROUTE DESCRIPTION

TAKEOFF RUNWAY 33: Climb on heading 329° to 600, then climbing right turn to 2000 on TED R-342 to TED VOR/DME, then on TED R-190 to NAPTO. Maintain ATC assigned altitude. Expect RADAR vectors to assigned route. Expect further clearance to filed altitude within 10 minutes after departure.

TURNAGAIN EIGHT DEPARTURE

ANCHORAGE, ALASKA
TED STEVENS ANCHORAGE INTL (ANC) (PANC)

AK, 25 JAN 2024 to 21 MAR 2024

AK, 25 JAN 2024 to 21 MAR 2024