

Orig 18312

TIN CITY FOUR RWY 16 DEPARTURE (TNCC4•JIPAK)

TIN CITY LRRS (PATC)
TIN CITY, ALASKA

SI-2334 [USAF]

UNICOM (CTAF)
126.2
TIN CITY RCO (NOME RADIO)
122.6
ANCHORAGE CENTER
133.3 290.4
1134
2289
450

TIN CITY
347 TNC
Chan 119 (V)

2428

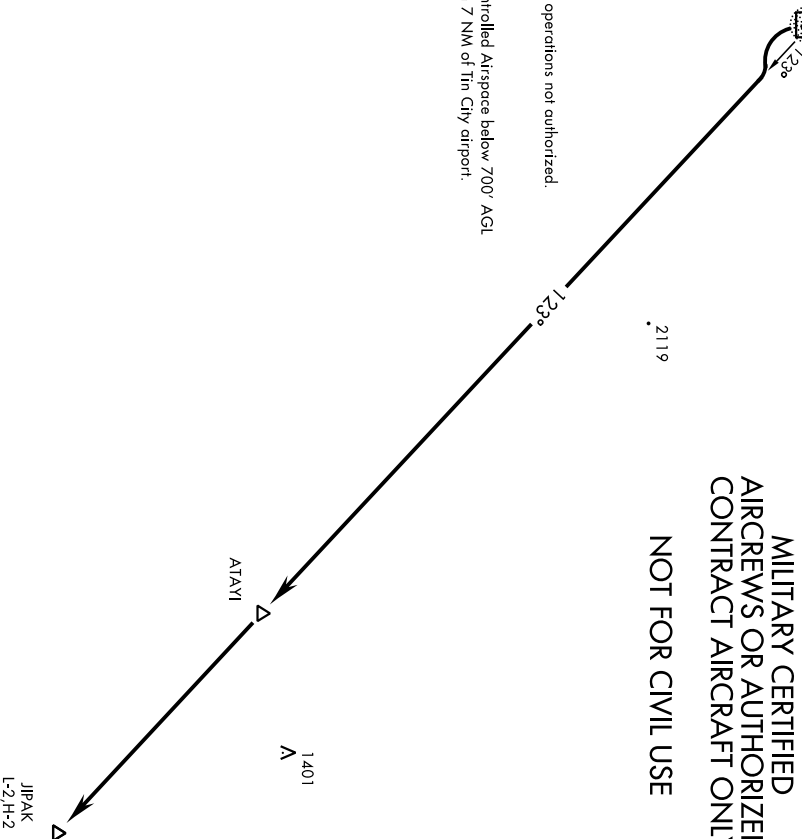
2256

**MILITARY CERTIFIED
AIRCREWS OR AUTHORIZED
CONTRACT AIRCRAFT ONLY
NOT FOR CIVIL USE**

2119

Night operations not authorized.

Uncontrolled Airspace below 700' AGL
within 7 NM of Tin City airport.



EMERG SAFE ALT 100 NM 6800

▼ DEPARTURE ROUTE DESCRIPTION

TAKE-OFF RWY 16: Climbing left turn to 7000, intercept TNC 123° bearing to ATAYI, then direct JIPAK.

TAKE-OFF RWY 34: NA

TIN CITY FOUR RWY 16 DEPARTURE (TNCC4•JIPAK)

TIN CITY, ALASKA
TIN CITY LRRS (PATC)