

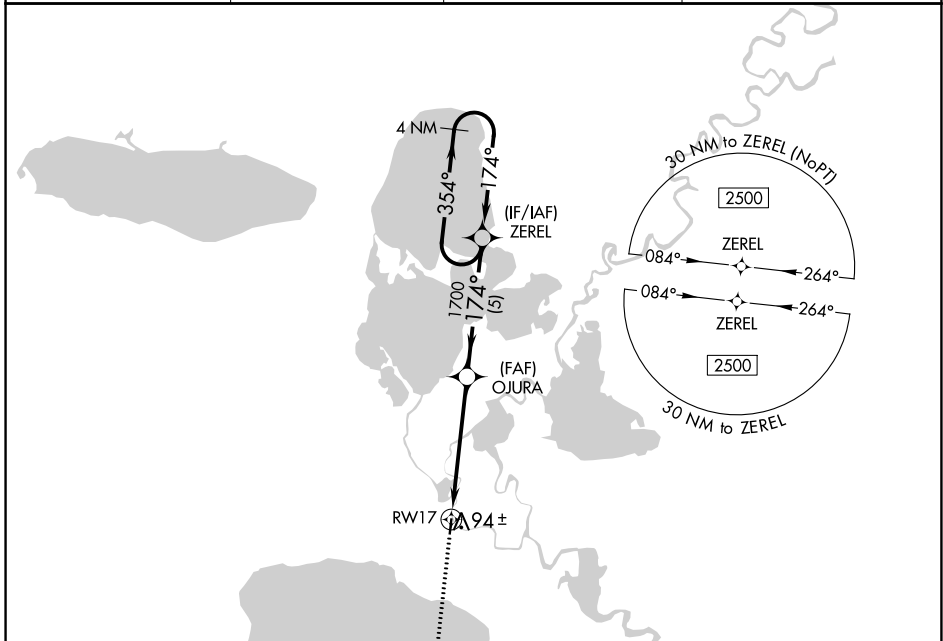
APP CRS	Rwy Idg	<b>3000</b>
<b>174°</b>	TDZE	<b>48</b>
	Apt Elev	<b>48</b>

# RNAV (GPS) RWY 17

KASIGLUK (Z09) (PFKA)

 	DME/DME RNP-0.3 NA. Use Nunapitchuk altimeter setting, when not received, use Bethel altimeter setting.	MISSED APPROACH: Climb to 2600 direct UNAWO and hold.

16A/PPT AWOS-3P <b>121.55</b>	BET/PABE ASOS <b>135.45</b>	ANCHORAGE CENTER <b>125.2 372.0</b>	CTAF <b>122.9</b>
----------------------------------	--------------------------------	--	----------------------



AK, 25 JAN 2024 to 21 MAR 2024

AK, 25 JAN 2024 to 21 MAR 2024

ELEV 48	TDZE 48
---------	---------

3000 X 60  
0.7% UP  
174°  
Z1  
35

MIRL Rwy 17-35

2600	UNAWO	ZEREL	4 NM Holding Pattern
↑			
RW17		OJURA	
3.00° TCH 40		1700	
5.1 NM		5 NM	
354°	174°	2500	

CATEGORY	A	B	C	D
LNAV MDA	640-1	592 (600-1)	NA	
CIRCLING	720-1	672 (700-1)	NA	

# RNAV (GPS) RWY 35

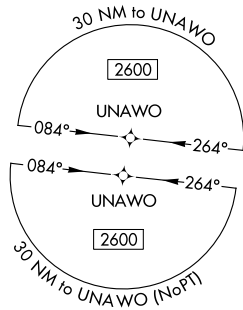
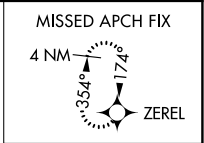
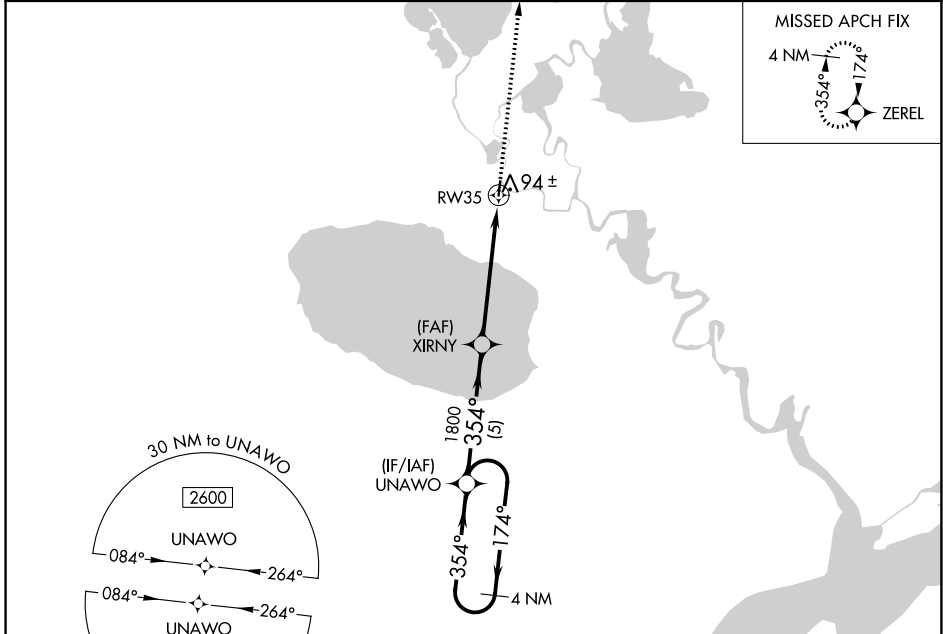
KASIGLUK (Z09) (PFKA)

APP CRS <b>354°</b>	Rwy Idg <b>3000</b>
	TDZE <b>48</b>
	Apt Elev <b>48</b>

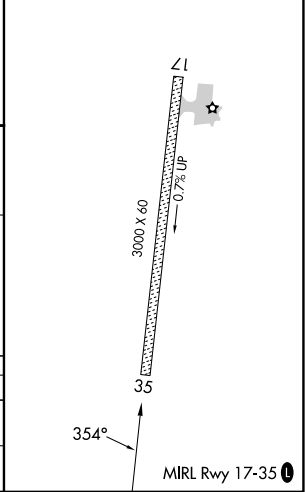
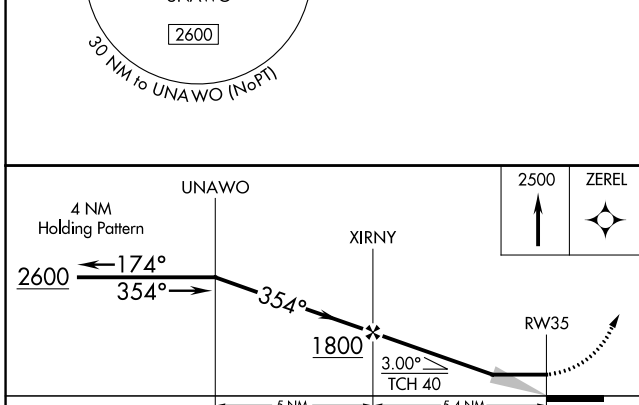
**NA** DME/DME RNP-0.3 NA. Use Nunapitchuk altimeter setting, when not received, use Bethel altimeter setting.

MISSED APPROACH: Climb to 2500 direct ZEREL and hold.

16A/PPIT AWOS-3P <b>121.55</b>	BET/PABE ASOS <b>135.45</b>	ANCHORAGE CENTER <b>125.2 372.0</b>	CTAF <b>122.9</b>
-----------------------------------	--------------------------------	--	----------------------



ELEV <b>48</b>	TDZE <b>48</b>
----------------	----------------



CATEGORY	A	B	C	D
LNAV MDA	680-1	632 (700-1)		NA
CIRCLING	720-1	672 (700-1)		NA

AK, 25 JAN 2024 to 21 MAR 2024

AK, 25 JAN 2024 to 21 MAR 2024