

HN LOM <b>242</b>	APP CRS <b>037°</b>	Rwy Idg TDZE Apt Elev	<b>8000</b> <b>17</b> <b>30</b>
----------------------	------------------------	-----------------------------	---------------------------------------

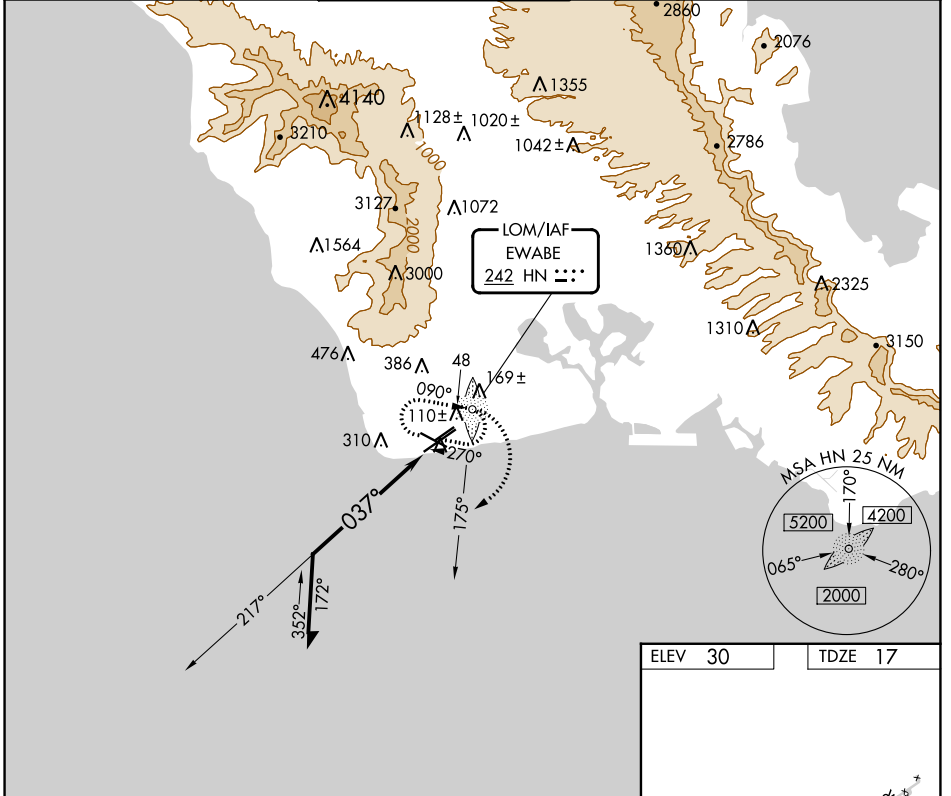
# NDB RWY 4R

KALAELOA (JOHN RODGERS FLD) (JRF)(PHJR)

**⚠** Circling not authorized north of Rwy 11 and 22R.

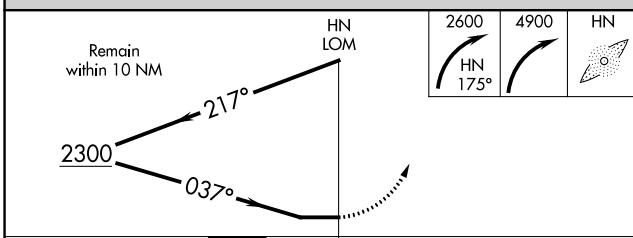
MISSED APPROACH: Climbing right turn to 2600 via 175° bearing from HN LOM, then climbing right turn to 4900 direct HN LOM and hold.

ATIS <b>119.8</b>	HCF APP CON <b>118.3 269.0</b>	KALAELOA TOWER ★ <b>132.6(CTAF) 340.2</b>	GND CON <b>123.8 336.4</b>	CLNC DEL <b>121.7 380.5</b>
----------------------	-----------------------------------	--	-------------------------------	--------------------------------



PAC, 25 JAN 2024 to 21 MAR 2024

PAC, 25 JAN 2024 to 21 MAR 2024



ELEV 30	TDZE 17
---------	---------

MIRA Rwy 4L-22R, 4R-22L and 11-29

CATEGORY	A	B	C	D
S-4R	800-1 783 (800-1)	800-1¼ 783 (800-1¼)	800-2¼ 783 (800-2¼)	800-2½ 783 (800-2½)
CIRCLING	800-1 770 (800-1)	800-1¼ 770 (800-1¼)	800-2¼ 770 (800-2¼)	800-2½ 770 (800-2½)

APP CRS	Rwy Idg	<b>8000</b>
<b>044°</b>	TDZE	<b>17</b>
	Apt Elev	<b>30</b>

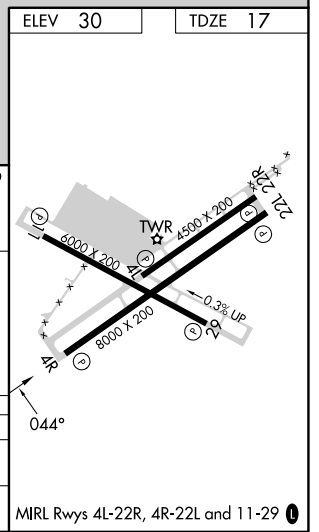
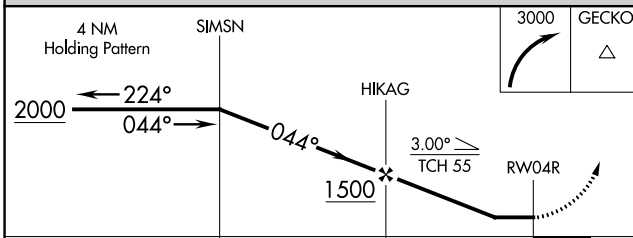
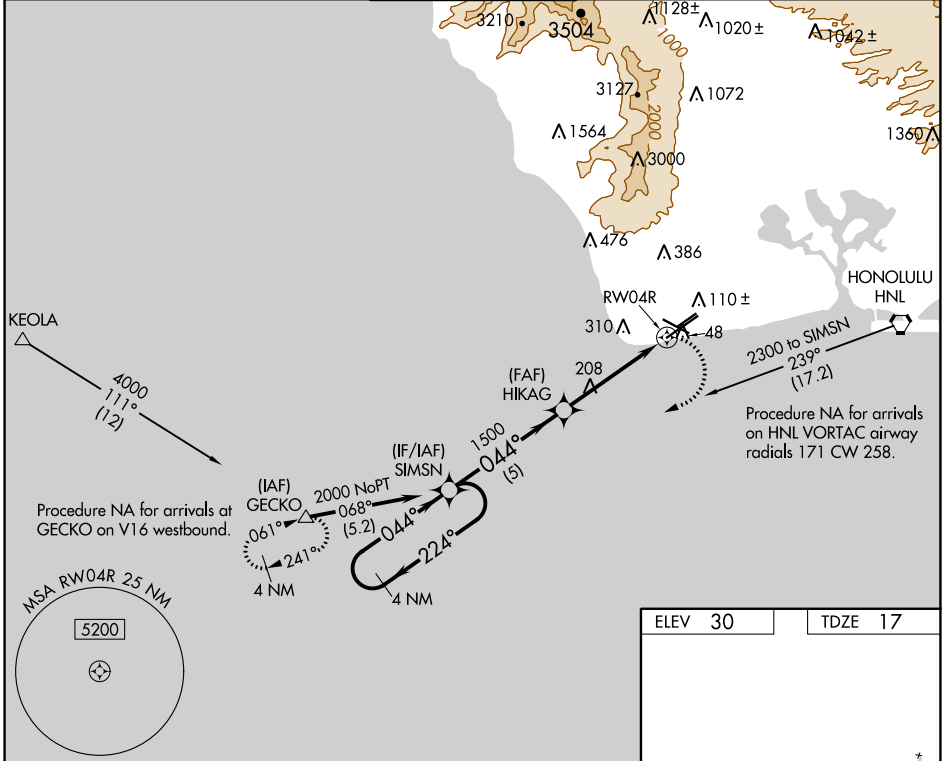
# RNAV (GPS) RWY 4R

KALAELOA (JOHN RODGERS FLD) (JRF) (PHJR)

**⚠** Circling NA north of Rwy 4R-22L. DME/DME RNP-0.3 NA. When local altimeter setting not received, use Honolulu altimeter setting and increase all MDA 40 feet. For inop MALSRS, increase LNAV Cat C/D visibility to 1 3/8 miles. For inop MALSRS when using Honolulu altimeter setting increase LNAV Cat C/D visibility to 1 3/8 miles. Helicopter visibility reduction below 1 SM NA. Procedure NA at night.

MISSED APPROACH: Climbing right turn to 3000 direct GECKO and hold.

ATIS <b>119.8</b>	HCF APP CON <b>118.3 269.0</b>	KALAELOA TOWER* <b>132.6 (CTAF) 340.2</b>	GND CON <b>123.8 336.4</b>	CLNC DEL <b>121.7 380.5</b>
----------------------	-----------------------------------	--	-------------------------------	--------------------------------



CATEGORY	A	B	C	D
LNAV MDA	460-1 443 (500-1)			
<b>C</b> CIRCLING	520-1 490 (500-1)	520-1 1/2 490 (500-1 1/2)		580-2 550 (600-2)

PAC, 25 JAN 2024 to 21 MAR 2024

PAC, 25 JAN 2024 to 21 MAR 2024

VORTAC HNL <b>114.8</b> Chan <b>95</b>	APP CRS <b>074°</b>	Rwy Idg <b>8000</b> TDZE <b>17</b> Apt Elev <b>30</b>
--	------------------------	---

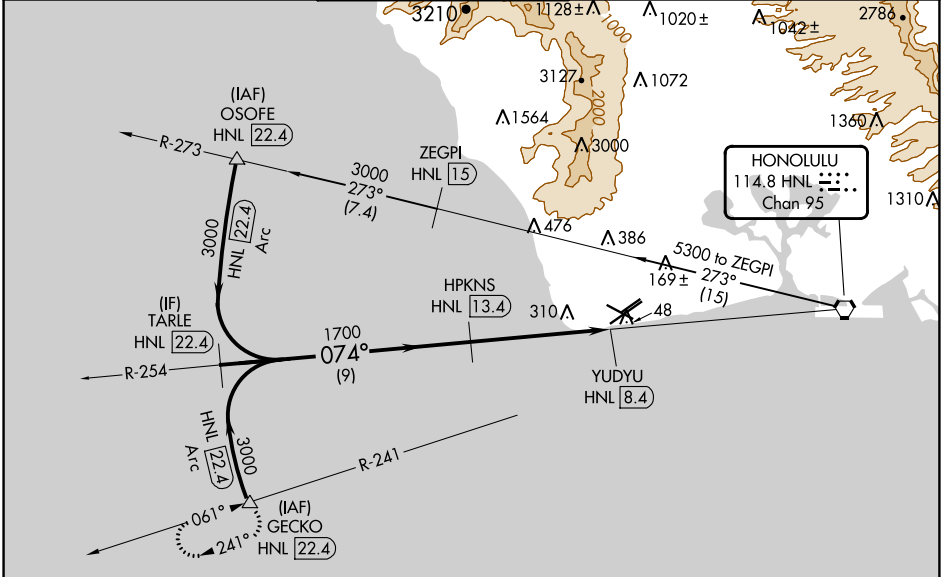
# VOR/DME RWY 4R

KALAELOA (JOHN RODGERS FLD) (JRF)(PHJR)

**▼** Circling NA north of Rwy 4R-22L.  
Inop table does not apply.

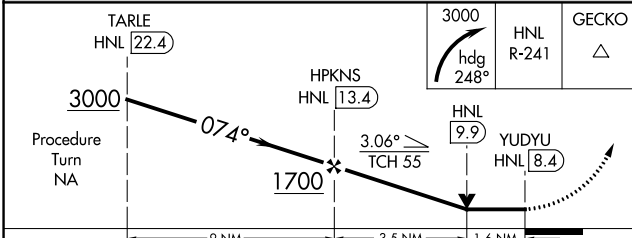
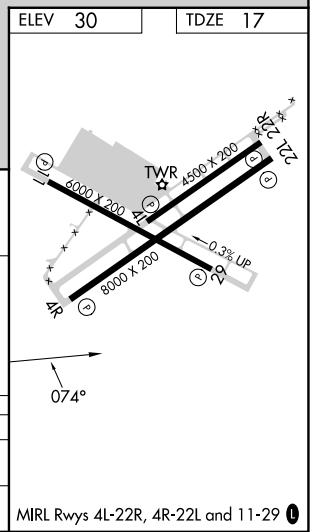
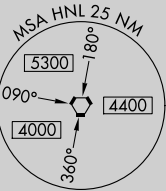
MISSED APPROACH: Climbing right turn to 3000 via heading 248° and HNL VORTAC R-241 to GECKO/HNL 22.4 DME and hold.

ATIS <b>119.8</b>	HCF APP CON <b>118.3 269.0</b>	KALAELOA TOWER ★ <b>132.6(CTAF) 0 340.2</b>	GND CON <b>123.8 336.4</b>	CLNC DEL <b>121.7 380.5</b>
----------------------	-----------------------------------	--	-------------------------------	--------------------------------



PAC, 25 JAN 2024 to 21 MAR 2024

PAC, 25 JAN 2024 to 21 MAR 2024



CATEGORY	A	B	C	D
S-4R	560-1 543 (600-1)		560-1½ 543 (600-1½)	560-1¾ 543 (600-1¾)
<b>C</b> CIRCLING	560-1 530 (600-1)		560-1½ 530 (600-1½)	580-2 550 (600-2)