

WAAS CH 53408 W18A	APP CRS 181°	Rwy Idg TDZE Apt Elev	4016 16 16
--	------------------------	-----------------------------	---------------------------------------

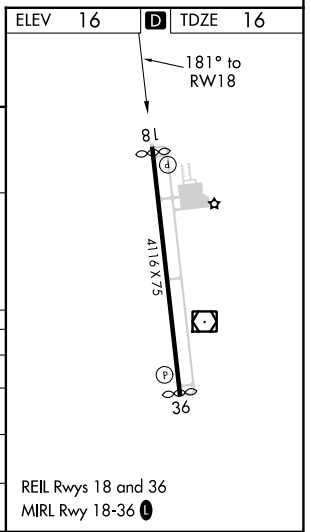
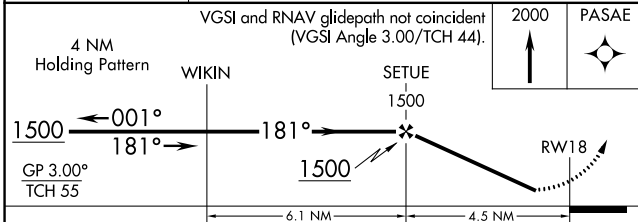
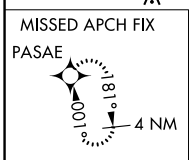
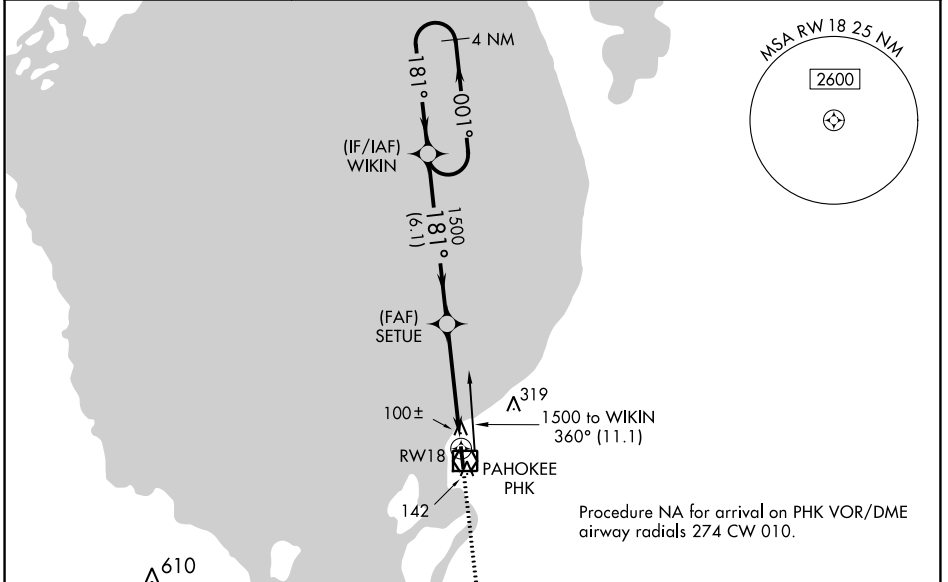
RNAV (GPS) RWY 18

PALM BEACH COUNTY GLADES (PHK)

⚠ Baro-VNAV NA. Rwy 18 helicopter visibility reduction below $\frac{3}{4}$ SM NA.
⚠ DME/DME RNP-0.3 NA. Use Palm Beach Intl altimeter setting, when not received procedure NA.

MISSED APPROACH: Climb to 2000 direct PASAE and hold.

PBI ASOS 123.75	PALM BEACH APP CON 125.2 317.4	UNICOM 122.8 (CTAF) 0
---------------------------	--	---------------------------------



CATEGORY	A	B	C	D
LPV DA	358-1 $\frac{1}{8}$ 342 (400-1 $\frac{1}{8}$)			
LNAV/VNAV DA	342-1 326 (400-1)			
LNAV MDA	440-1 424 (500-1)		440-1 $\frac{1}{4}$ 424 (500-1 $\frac{1}{4}$)	
C CIRCLING	580-1 564 (600-1)		760-2 $\frac{1}{4}$ 744 (800-2 $\frac{1}{4}$)	

SE-3, 22 FEB 2024 to 21 MAR 2024

SE-3, 22 FEB 2024 to 21 MAR 2024