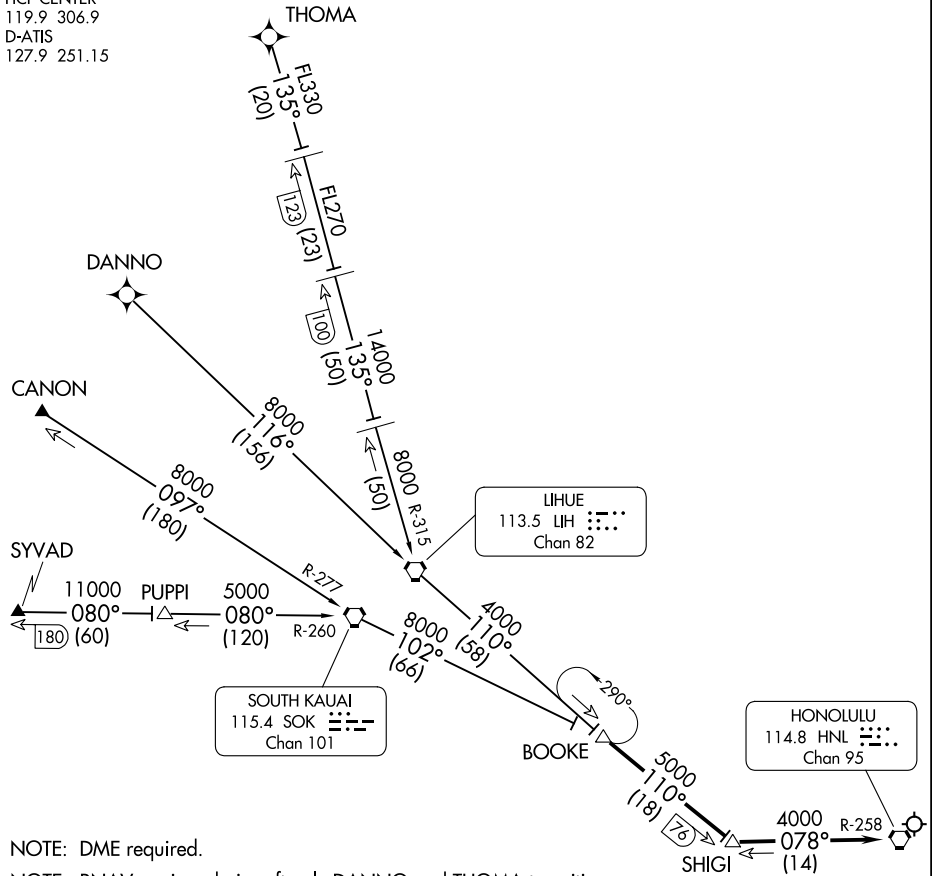


# BOOKE EIGHT ARRIVAL

HCF CENTER  
119.9 306.9  
D-ATIS  
127.9 251.15



NOTE: DME required.

NOTE: RNAV equipped aircraft only DANNO and THOMA transitions.

NOTE: Chart not to scale

## ARRIVAL ROUTE DESCRIPTION

**CANON TRANSITION (CANON.BOOKE8):** From over CANON INT via SOK R-277 to SOK VORTAC. Then via SOK R-102 to BOOKE DME. Thence. . .

**DANNO TRANSITION (DANNO.BOOKE8):** From over DANNO WP via RNAV 116° course to LIH VORTAC. Then via LIH R-110 to BOOKE DME. Thence. . .

**SYVAD TRANSITION (SYVAD.BOOKE8):** From over SYVAD INT via SOK R-260 to SOK VORTAC. Then via SOK R-102 to BOOKE DME. Thence. . .

**THOMA TRANSITION (THOMA.BOOKE8):** From over THOMA WP via RNAV 135° course to LIH 123 DME, then LIH R-315 to LIH VORTAC. Then via LIH R-110 to BOOKE DME. Thence. . .

Thence. . .

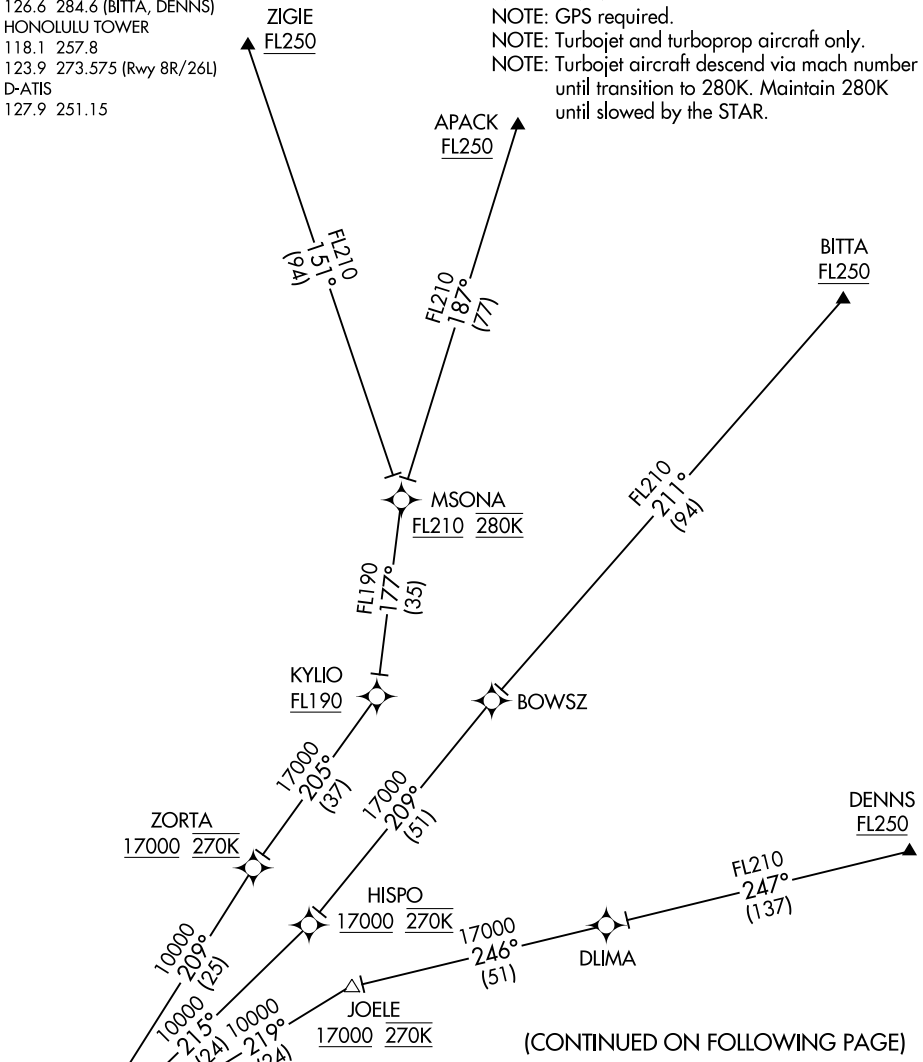
. . . From over BOOKE DME via LIH R-110 and HNL R-258 to HNL VORTAC. Expect RADAR vectors.

# BOOKE EIGHT ARRIVAL

# INOYI ONE ARRIVAL (RNAV) Transition Routes

HCF CENTER  
127.6 291.6 (APACK, ZIGIE)  
126.6 284.6 (BITTA, DENNS)  
HONOLULU TOWER  
118.1 257.8  
123.9 273.575 (Rwy 8R/26L)  
D-ATIS  
127.9 251.15

NOTE: RADAR required.  
NOTE: RNAV 1.  
NOTE: GPS required.  
NOTE: Turbojet and turboprop aircraft only.  
NOTE: Turbojet aircraft descend via mach number until transition to 280K. Maintain 280K until slowed by the STAR.



(CONTINUED ON FOLLOWING PAGE)

- APACK TRANSITION (APACK.INOY11)
- BITTA TRANSITION (BITTA.INOY11)
- DENNS TRANSITION (DENNS.INOY11)
- JOELE TRANSITION (JOELE.INOY11)
- ZIGIE TRANSITION (ZIGIE.INOY11)

See following page for Arrival Routes.

NOTE: Chart not to scale.

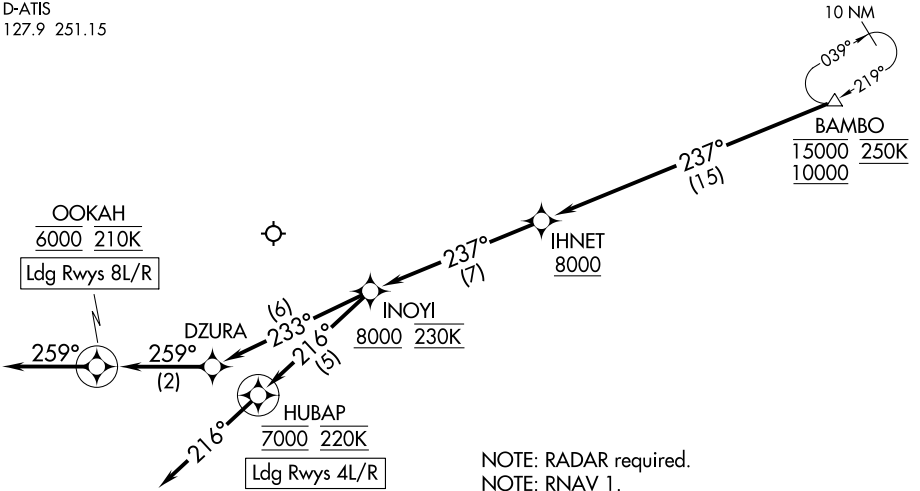
PAC: 25 JAN 2024 to 21 MAR 2024

PAC: 25 JAN 2024 to 21 MAR 2024

# INOYI ONE ARRIVAL (RNAV) Transition Routes

# INOYI ONE ARRIVAL (RNAV) Arrival Routes

HCF CENTER  
127.6 291.6 (APACK, ZIGIE)  
126.6 284.6 (BITTA, DENNS)  
HONOLULU TOWER  
118.1 257.8  
123.9 273.575 (Rwy 8R/26L)  
D-ATIS  
127.9 251.15



- NOTE: RADAR required.
- NOTE: RNAV 1.
- NOTE: GPS required.
- NOTE: Turbojet and turboprop aircraft only.
- NOTE: Turbojet aircraft descend via mach number until transition to 280K. Maintain 280K until slowed by the STAR.

NOTE: Chart not to scale.

## ARRIVAL ROUTE DESCRIPTION

From BAMBO on track 237° to cross IHNETH at or above 8000, then on track 237° to cross INOYI at or above 8000 and at 230K.

LANDING RUNWAY 4L: From INOYI on track 216° to cross HUBAP at 7000 and at 220K, then on track 216°. Expect RADAR vectors to final approach course or visual approach.

LANDING RUNWAY 4R: From INOYI on track 216° to cross HUBAP at 7000 and at 220K, then on track 216°. Expect RNAV RNP/ILS/GPS approach or RADAR vectors to final approach course.

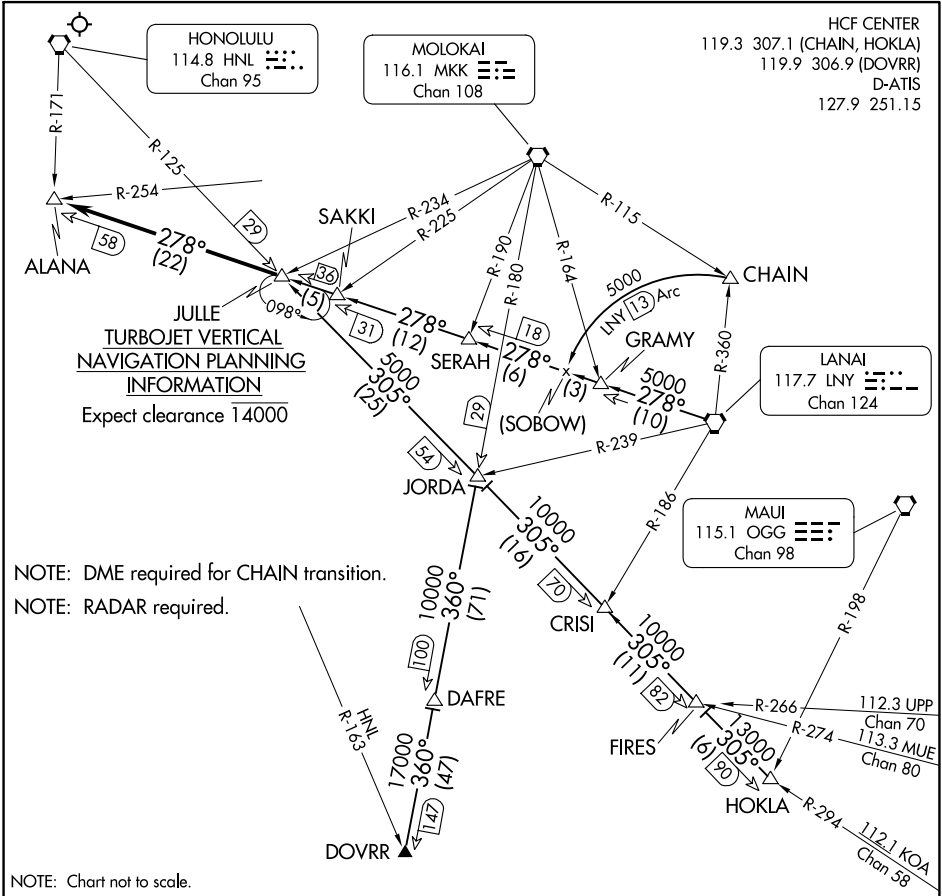
LANDING RUNWAY 8L: From INOYI on track 233° to DZURA, then on track 259° to cross OOKAH at 6000 and at 210K, then on heading 259°. Expect RNAV RNP/ILS/GPS approach or RADAR vectors to final approach course.

LANDING RUNWAY 8R: From INOYI on track 233° to DZURA, then on track 259° to cross OOKAH at 6000 and at 210K, then on heading 259°. Expect RADAR vectors to final approach course or visual approach.

# JULLE FIVE ARRIVAL

AL-754 (FAA)

DANIEL K INOUYE INTL (HNL) (PHNL)  
HONOLULU, HAWAII



NOTE: DME required for CHAIN transition.

NOTE: RADAR required.

NOTE: Chart not to scale.

## ARRIVAL ROUTE DESCRIPTION

**CHAIN TRANSITION (CHAIN.JULLE5):** From over CHAIN INT on LNY 13 DME CCW arc to SOBOW then via LNY R-278 to JULLE INT. Thence. . .

**DOVRR TRANSITION (DOVRR.JULLE5):** From over DOVRR INT via MKK R-180 to JORDA INT then via HNL R-125 to JULLE INT. Thence. . .

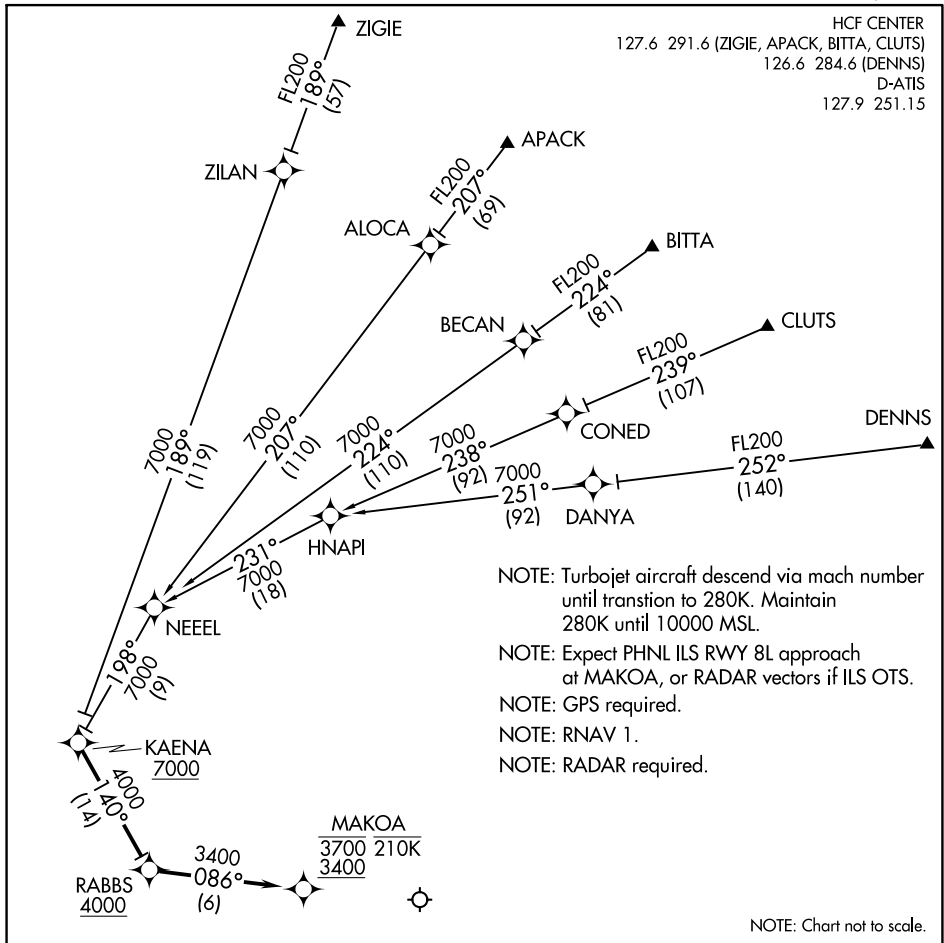
**HOKLA TRANSITION (HOKLA.JULLE5):** From over HOKLA INT via HNL R-125 and KOA R-294 on HNL R-125 to JULLE INT. Thence. . .

**LANAI TRANSITION (LNY.JULLE5):** From over LNY VORTAC via LNY R-278 to JULLE INT. Thence. . .

. . . From over JULLE INT on LNY R-278 to ALANA INT. Expect vectors to final approach course.

**LOST COMMUNICATIONS:** At ALANA INT proceed with the VOR or TACAN RWY 4R approach.

# JULLE FIVE ARRIVAL



PAC, 25 JAN 2024 to 21 MAR 2024

PAC, 25 JAN 2024 to 21 MAR 2024

**ARRIVAL ROUTE DESCRIPTION**

- APACK TRANSITION (APACK.KAENA2)
- BITTA TRANSITION (BITTA.KAENA2)
- CLUTS TRANSITION (CLUTS.KAENA2)
- DENNS TRANSITION (DENNS.KAENA2)
- ZIGIE TRANSITION (ZIGIE.KAENA2)

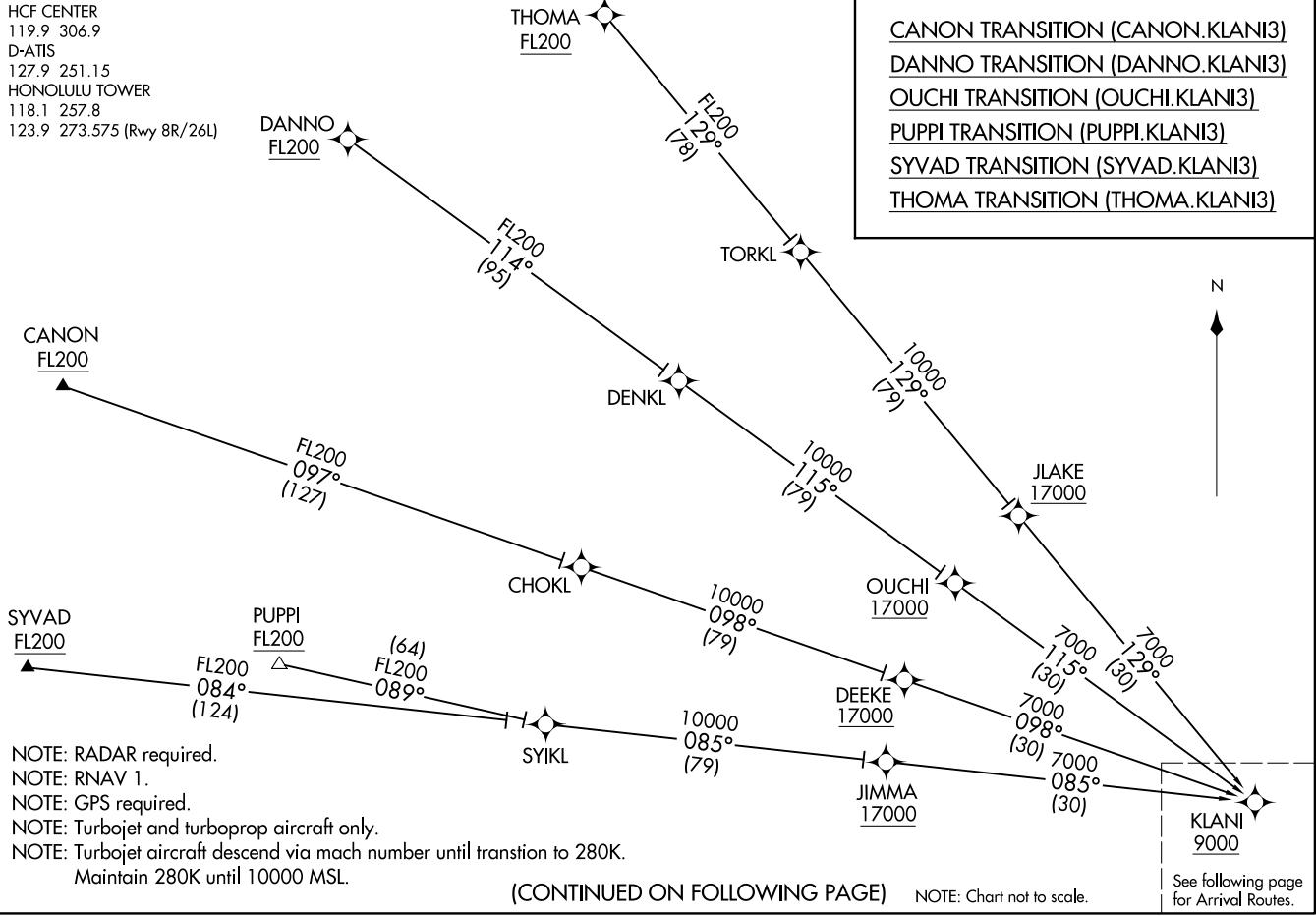
From KAENA as depicted to MAKOA. Cross RABBS at/above 4000, cross MAKOA at/below 3700 and at/above 3400 and at/below 210K.  
 Expect PHNL ILS RWY 8L approach.

LOST COMMUNICATIONS: Descend via the KAENA ARRIVAL. At MAKOA, cleared PHNL ILS RWY 8L approach.

KLANI THREE ARRIVAL (RNAV) Transition Routes  
(KLANI.KLANI3) 30JAN20  
HONOLULU, HAWAII  
DANIEL K INOUYE INTL (HNL) (PHNL)

HCF CENTER  
119.9 306.9  
D-ATIS  
127.9 251.15  
HONOLULU TOWER  
118.1 257.8  
123.9 273.575 (Rwy 8R/26L)

CANON TRANSITION (CANON.KLANI3)  
DANNO TRANSITION (DANNO.KLANI3)  
OUCHI TRANSITION (OUCHI.KLANI3)  
PUPPI TRANSITION (PUPPI.KLANI3)  
SYVAD TRANSITION (SYVAD.KLANI3)  
THOMA TRANSITION (THOMA.KLANI3)



NOTE: RADAR required.  
NOTE: RNAV 1.  
NOTE: GPS required.  
NOTE: Turbojet and turboprop aircraft only.  
NOTE: Turbojet aircraft descend via mach number until transtion to 280K.  
Maintain 280K until 10000 MSL.

(CONTINUED ON FOLLOWING PAGE)

NOTE: Chart not to scale.

See following page for Arrival Routes.

(KLANI.KLANI3) 20030  
AL-754 (FAA) DANIEL K INOUYE INTL (HNL) (PHNL)  
HONOLULU, HAWAII  
KLANI THREE ARRIVAL (RNAV) Transition Routes

### ARRIVAL ROUTE DESCRIPTION

From KLANI on track 111° to cross BAFRE at or above 8000, then on track 111° to SHLLS.

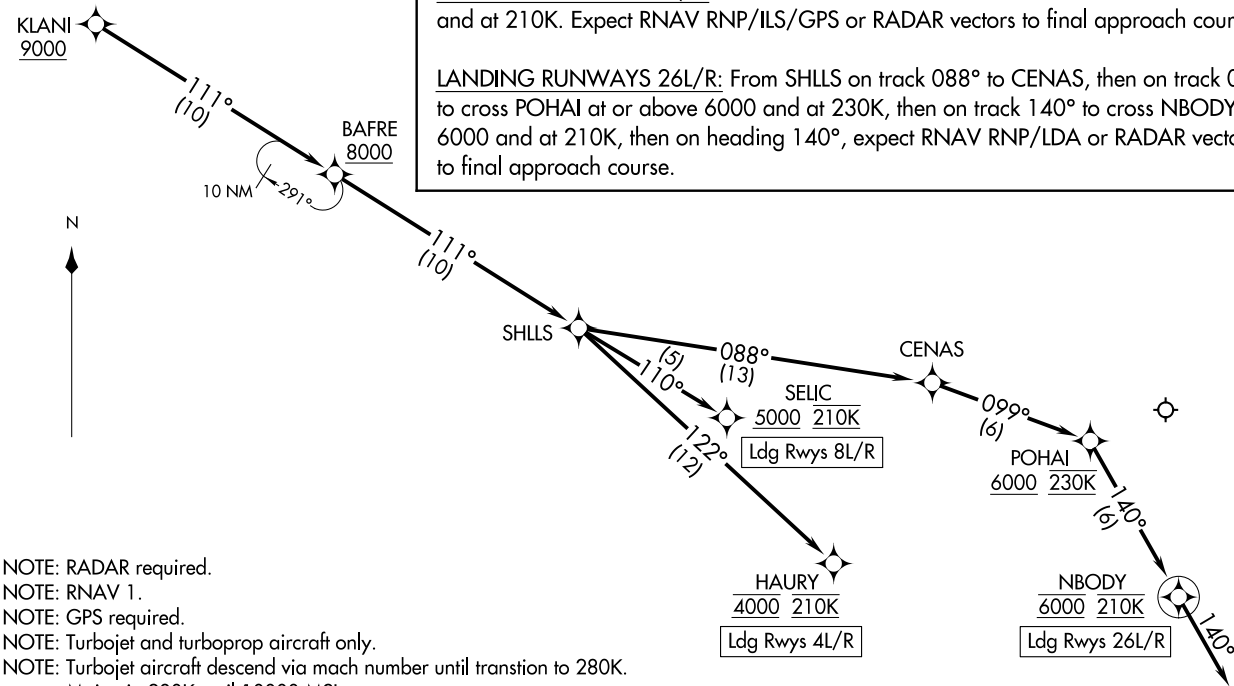
LANDING RUNWAYS 4L/R: From SHLLS on track 122° to cross HAURY at 4000 and at 210K, expect RNAV RNP/ILS/GPS or RADAR vectors to final approach course.

LANDING RUNWAYS 8L/R: From SHLLS on track 110° to cross SELIC at or above 5000 and at 210K. Expect RNAV RNP/ILS/GPS or RADAR vectors to final approach course.

LANDING RUNWAYS 26L/R: From SHLLS on track 088° to CENAS, then on track 099° to cross POHAI at or above 6000 and at 230K, then on track 140° to cross NBODY at 6000 and at 210K, then on heading 140°, expect RNAV RNP/LDA or RADAR vectors to final approach course.

KLANI THREE ARRIVAL (RNAV) Arrival Routes  
(KLANI, KLANI3) 30JAN20  
DANIEL K INOUYE INTL (HNL) (PHNL)  
HONOLULU, HAWAII

HCF CENTER  
119.9 306.9  
D-ATIS  
127.9 251.15  
HONOLULU TOWER  
118.1 257.8  
123.9 273.575 (Rwy 8R/26L)



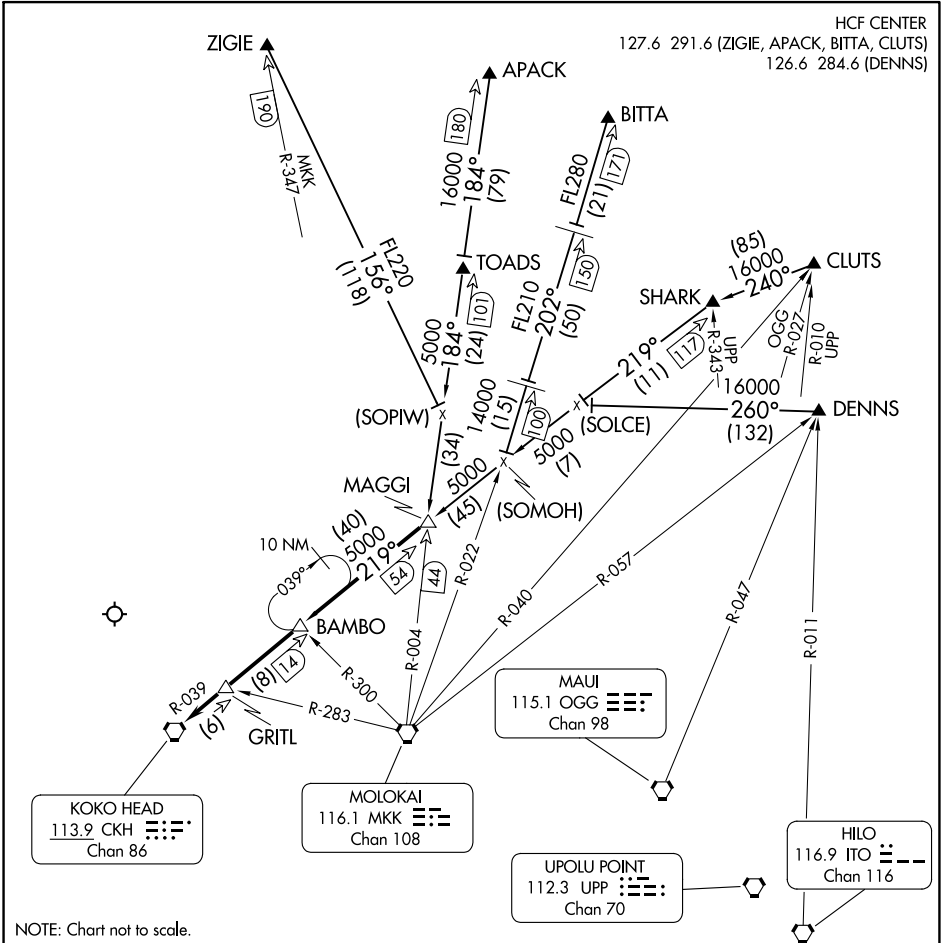
NOTE: RADAR required.  
NOTE: RNAV 1.  
NOTE: GPS required.  
NOTE: Turbojet and turboprop aircraft only.  
NOTE: Turbojet aircraft descend via mach number until transtion to 280K.  
Maintain 280K until 10000 MSL.

NOTE: Chart not to scale.

(KLANI, KLANI3) 20030  
KLANI THREE ARRIVAL (RNAV) Arrival Routes  
AL754 (FAA)  
DANIEL K INOUYE INTL (HNL) (PHNL)  
HONOLULU, HAWAII

PAC, 25 JAN 2024 to 21 MAR 2024

PAC, 25 JAN 2024 to 21 MAR 2024



NOTE: Chart not to scale.

ARRIVAL ROUTE DESCRIPTION

**APACK TRANSITION (APACK.MAGGI3):** From over APACK DME via MKK R-004 to MAGGI INT. Thence. . .

**BITTA TRANSITION (BITTA.MAGGI3):** From over BITTA DME via MKK R-022 to intercept CKH R-039 to MAGGI INT. Thence. . .

**CLUTS TRANSITION (CLUTS.MAGGI3):** From over CLUTS DME via heading 240° to intercept CKH R-039 to MAGGI INT. Thence. . .

**DENNS TRANSITION (DENNS.MAGGI3):** From over DENNS INT via heading 260° to intercept CKH R-039 to MAGGI INT. Thence. . .

**ZIGIE TRANSITION (ZIGIE.MAGGI3):** From over ZIGIE DME via heading 156° to intercept MKK R-004 to MAGGI INT. Thence. . .

. . . From over MAGGI INT via CKH R-039 to CKH VORTAC then RADAR vectors for approach to airport.



MAKAH ONE ARRIVAL (RNAV)  
(MAKAH.MAKAH1) 30ANZ0

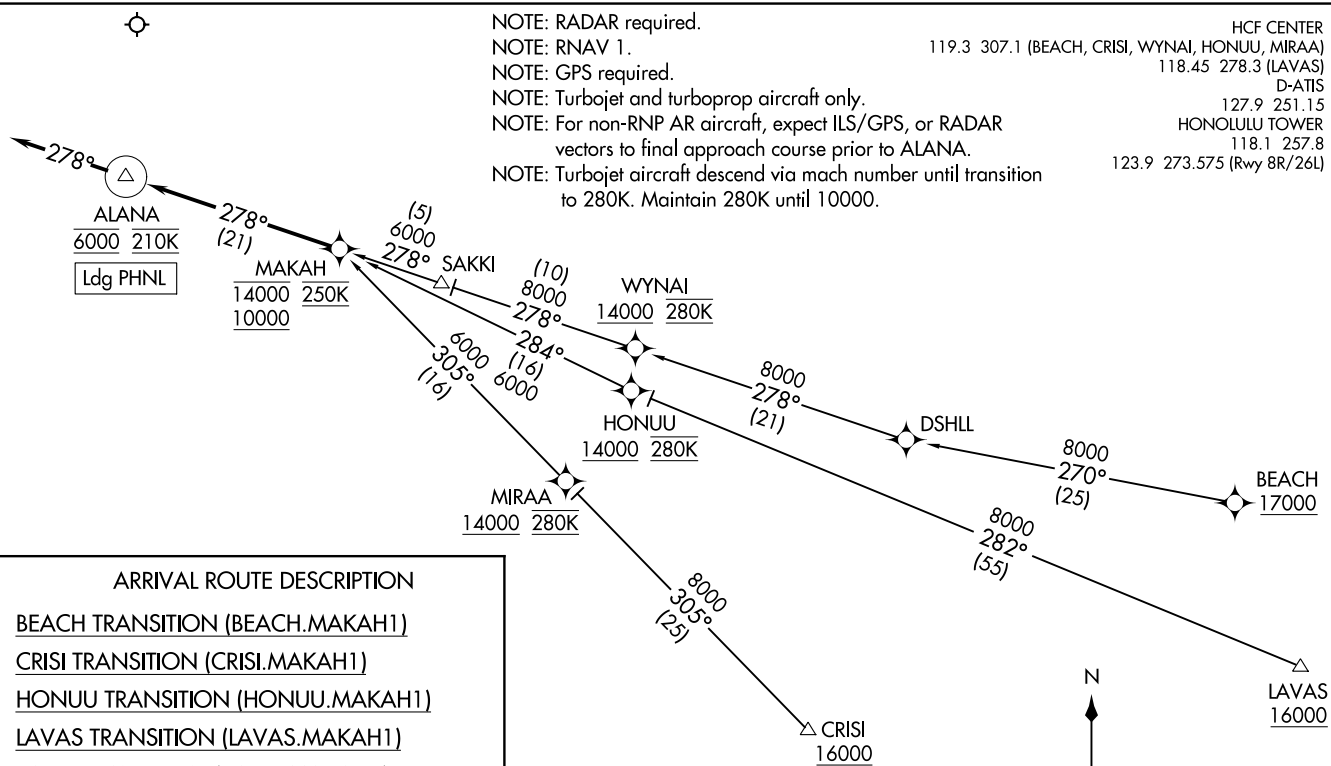
(MAKAH.MAKAH1) 21112  
MAKAH ONE ARRIVAL (RNAV)

A1-754 (FAA)

DANIEL K INOUYE INTL (HNL) (PHNL)  
HONOLULU, HAWAII

NOTE: RADAR required.  
 NOTE: RNAV 1.  
 NOTE: GPS required.  
 NOTE: Turbojet and turboprop aircraft only.  
 NOTE: For non-RNP AR aircraft, expect ILS/GPS, or RADAR vectors to final approach course prior to ALANA.  
 NOTE: Turbojet aircraft descend via mach number until transition to 280K. Maintain 280K until 10000.

HCF CENTER  
 119.3 307.1 (BEACH, CRISI, WYNAI, HONUU, MIRAA)  
 118.45 278.3 (LAVAS)  
 D-ATIS 127.9 251.15  
 HONOLULU TOWER 118.1 257.8  
 123.9 273.575 (Rwy 8R/26L)



ARRIVAL ROUTE DESCRIPTION

- BEACH TRANSITION (BEACH.MAKAH1)
- CRISI TRANSITION (CRISI.MAKAH1)
- HONUU TRANSITION (HONUU.MAKAH1)
- LAVAS TRANSITION (LAVAS.MAKAH1)
- SAKKI TRANSITION (SAKKI.MAKAH1)

From MAKAH on track 278° to cross ALANA at 6000 and at 210K, then on heading 278° or as assigned by ATC. Expect assigned instrument approach prior to ALANA.

NOTE: Chart not to scale.

(OPACA.OPACA4) 23334  
**OPACA FOUR ARRIVAL**

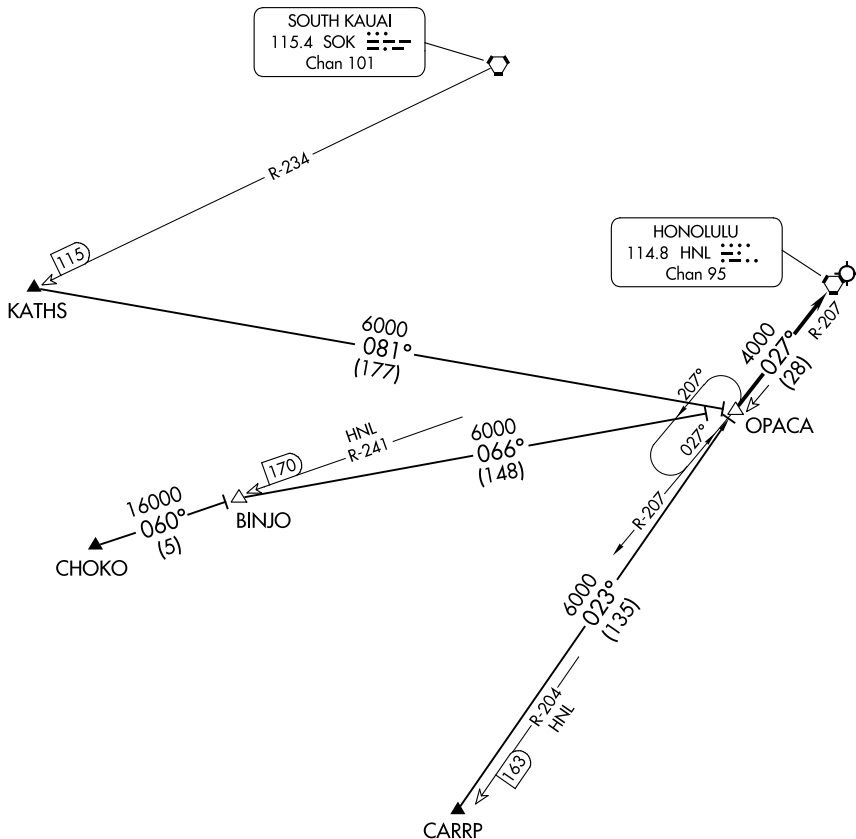
AL-754 (FAA)

DANIEL K INOUYE INTL (HNL) (PHNL)  
 HONOLULU, HAWAII

HCF CENTER  
 119.9 306.9

SOUTH KAUAI  
 115.4 SOK  
 Chan 101

HONOLULU  
 114.8 HNL  
 Chan 95



NOTE: RNAV equipped aircraft only.

NOTE: Chart not to scale.

**ARRIVAL ROUTE DESCRIPTION**

CARRP TRANSITION (CARRP.OPACA4): From over CARRP WP, RNAV direct to OPACA DME. Thence. . .

CHOKO TRANSITION (CHOKO.OPACA4): From over CHOKO WP, RNAV direct to BINJO DME, then direct to OPACA DME. Thence. . .

KATHS TRANSITION (KATHS.OPACA4): From over KATHS WP, RNAV direct to OPACA DME. Thence. . .

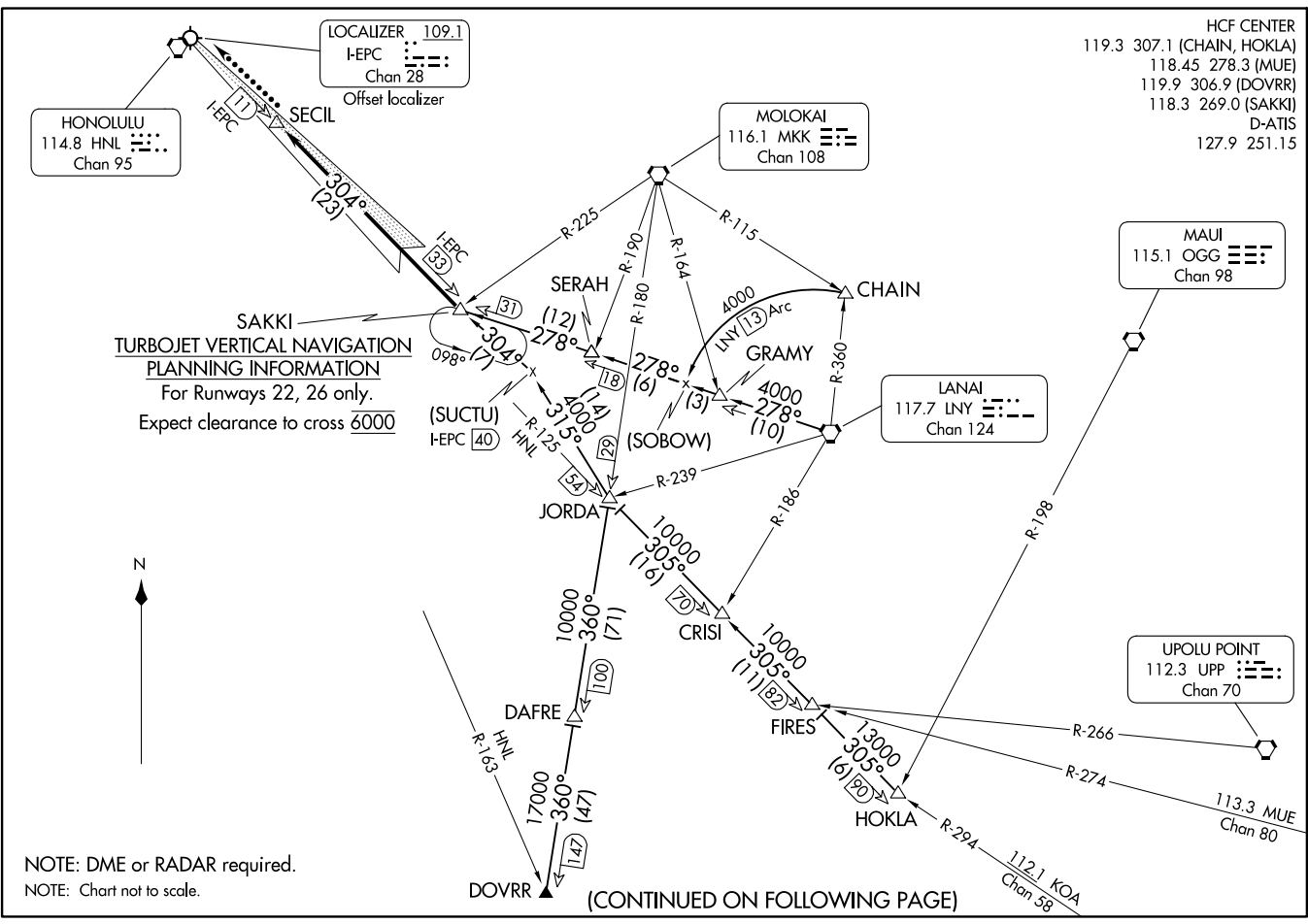
. . . From over OPACA DME via HNL R-207 to HNL VORTAC, expect RADAR vectors to final approach course.

SAKKI FIVE ARRIVAL  
(SAKKI, SAKKIS) 25AUG11

(SAKKI, SAKKIS) 23334  
SAKKI FIVE ARRIVAL

AL-754 (FAA)

DANIEL K INOUYE INTL (HNL) (PHNL)  
HONOLULU, HAWAII



HCF CENTER  
 119.3 307.1 (CHAIN, HOKLA)  
 118.45 278.3 (MUE)  
 119.9 306.9 (DOVRR)  
 118.3 269.0 (SAKKI)  
 D-ATIS  
 127.9 251.15

SAKKI  
 TURBOJET VERTICAL NAVIGATION  
 PLANNING INFORMATION  
 For Runways 22, 26 only.  
 Expect clearance to cross 6000

NOTE: DME or RADAR required.  
 NOTE: Chart not to scale.

(CONTINUED ON FOLLOWING PAGE)

HONOLULU, HAWAII  
DANIEL K INOUYE INTL (HNL) (PHNL)

ARRIVAL ROUTE DESCRIPTION

CHAIN TRANSITION (CHAIN.SAKKI5): From over CHAIN INT on LNY 13 DME CCW arc to SOBOW and LNY R-278 to SAKKI INT. Thence. . . .

DOVRR TRANSITION (DOVRR.SAKKI5): From over DOVRR on MKK R-180 to JORDA, turn left heading 315° to join I-EPC LDA course at SUCTU 40 DME then to SAKKI INT. Thence. . . .

HOKLA TRANSITION (HOKLA.SAKKI5): From over HOKLA on HNL R-125 to JORDA, turn right heading 315° to join I-EPC LDA course at SUCTU 40 DME then to SAKKI INT. Thence. . . .

LANAI TRANSITION (LNY.SAKKI5): From over LNY VORTAC on LNY R-278 to SAKKI INT. Thence. . . .

. . . .For runways 22, 26 only: From over SAKKI INT on the LDA/DME RWY 26L course to SECIL 11 DME.

LOST COMMUNICATIONS: At SECIL INT/WP proceed with the LDA/DME RWY 26L approach.

PAC: 25 JAN 2024 to 21 MAR 2024

PAC: 25 JAN 2024 to 21 MAR 2024

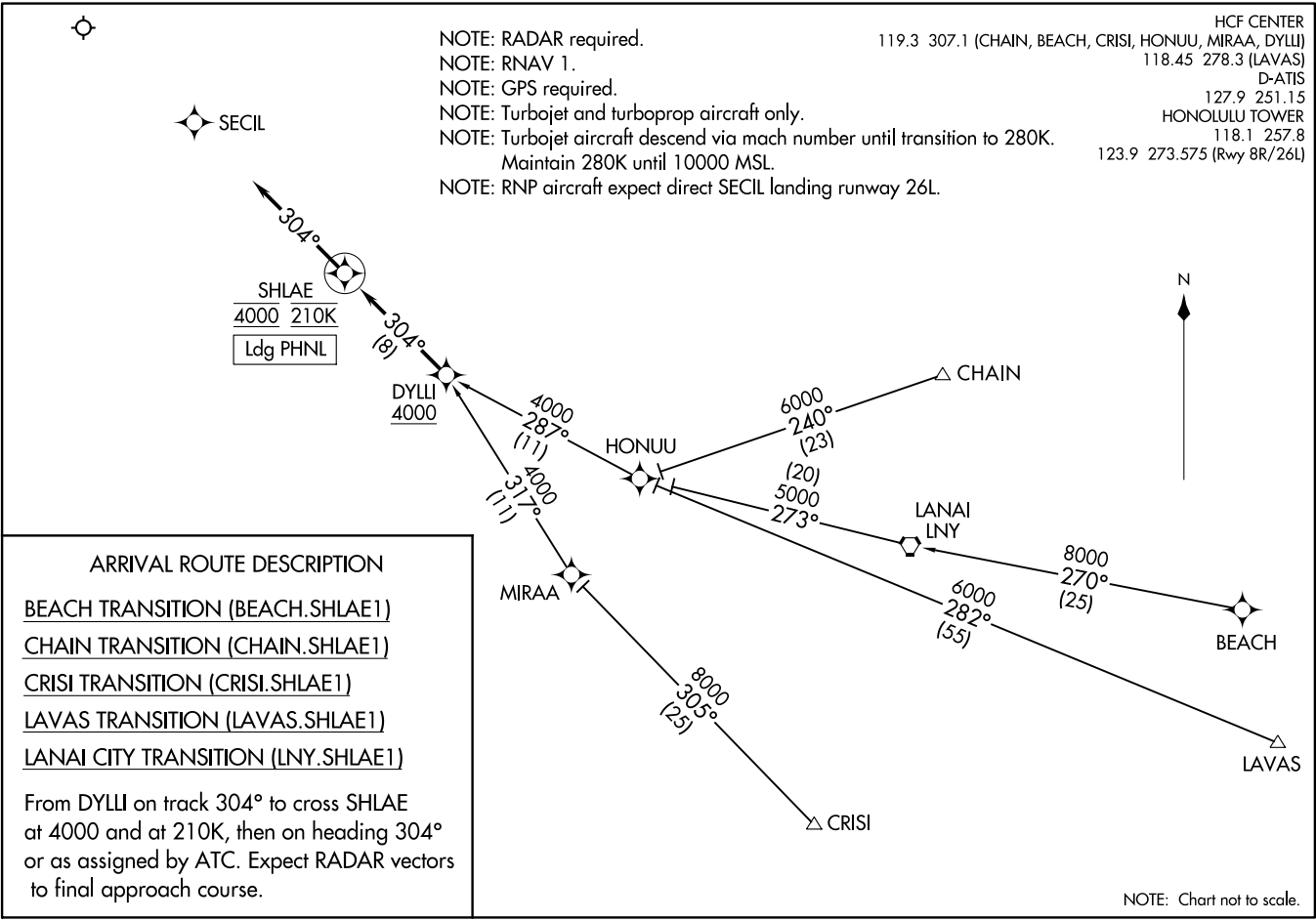
SHLAE ONE ARRIVAL (RNAV)  
(DYLLI.SHLAE1) 30JAN20

DANIEL K INOUYE INTL (HNL) (PHNL)  
HONOLULU, HAWAII

(DYLLI.SHLAE1) 21112  
SHLAE ONE ARRIVAL (RNAV)

AL-754 (FAA)

DANIEL K INOUYE INTL (HNL) (PHNL)  
HONOLULU, HAWAII



(SYMIN.SYMIN1) 20030

# SYMIN ONE ARRIVAL (RNAV)

AL-754 (FAA)

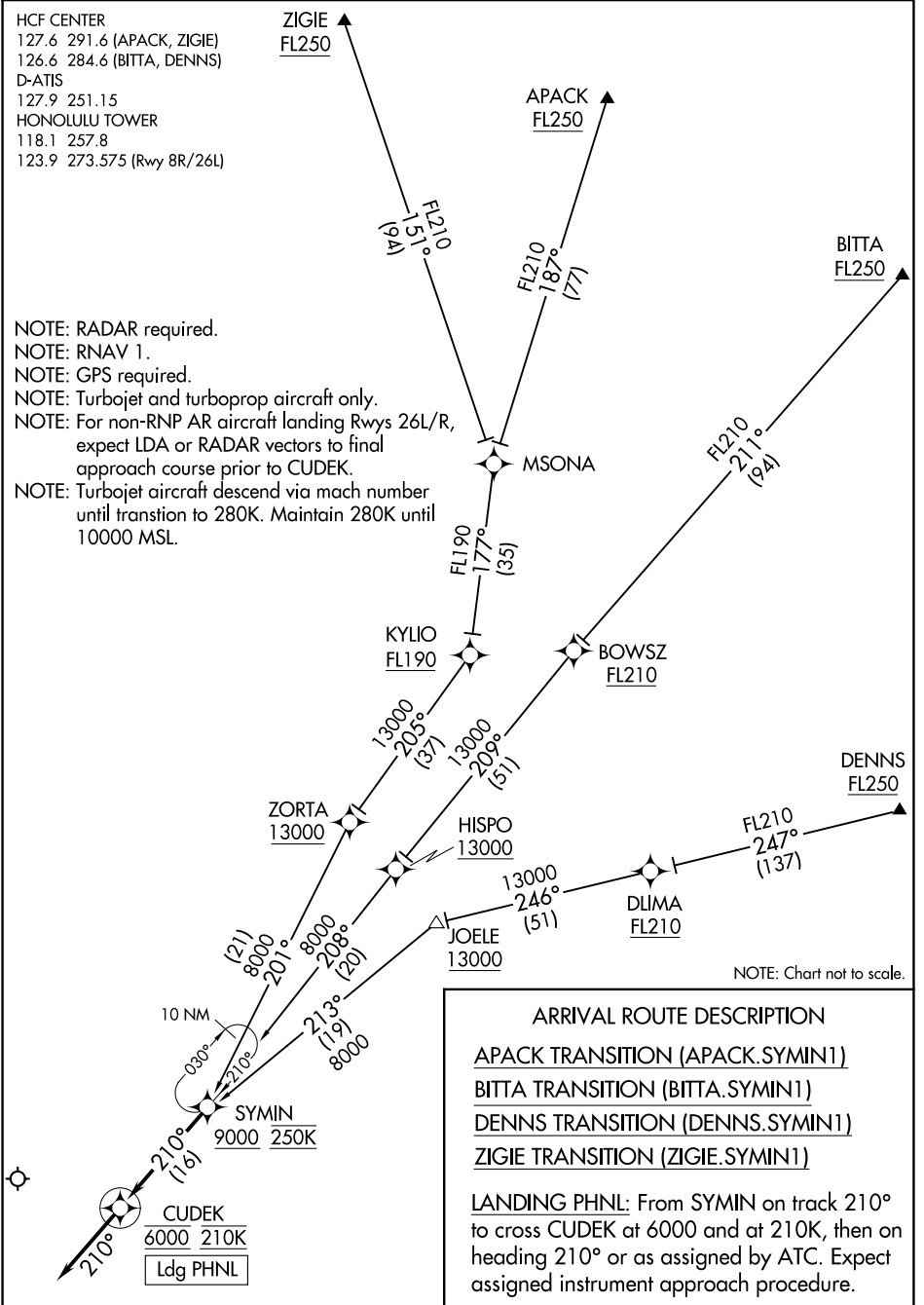
DANIEL K INOUYE INTL (HNL) (PHNL)  
HONOLULU, HAWAII

HCF CENTER  
127.6 291.6 (APACK, ZIGIE)  
126.6 284.6 (BITTA, DENNS)  
D-ATIS  
127.9 251.15  
HONOLULU TOWER  
118.1 257.8  
123.9 273.575 (Rwy 8R/26L)

- NOTE: RADAR required.
- NOTE: RNAV 1.
- NOTE: GPS required.
- NOTE: Turbojet and turboprop aircraft only.
- NOTE: For non-RNP AR aircraft landing Rwy 26L/R, expect LDA or RADAR vectors to final approach course prior to CUDEK.
- NOTE: Turbojet aircraft descend via mach number until transtion to 280K. Maintain 280K until 10000 MSL.

PAC, 25 JAN 2024 to 21 MAR 2024

PAC, 25 JAN 2024 to 21 MAR 2024



NOTE: Chart not to scale.

### ARRIVAL ROUTE DESCRIPTION

APACK TRANSITION (APACK.SYMIN1)

BITTA TRANSITION (BITTA.SYMIN1)

DENNS TRANSITION (DENNS.SYMIN1)

ZIGIE TRANSITION (ZIGIE.SYMIN1)

LANDING PHNL: From SYMIN on track 210° to cross CUDEK at 6000 and at 210K, then on heading 210° or as assigned by ATC. Expect assigned instrument approach procedure.

# SYMIN ONE ARRIVAL (RNAV)

(SYMIN.SYMIN1) 30JAN20

HONOLULU, HAWAII  
DANIEL K INOUYE INTL (HNL) (PHNL)