

# MRBIL ONE DEPARTURE (RNAV)

AL-322 (FAA)

PHOENIX SKY HARBOR INTL (PHX)  
PHOENIX, ARIZONA

D-ATIS  
127.575  
CLNC DEL  
118.1 269.2  
CPDLC  
GND CON  
119.75 269.2 (NORTH)  
132.55 269.2 (SOUTH)  
PHOENIX TOWER  
118.7 278.8 (Rwy 8-26)  
120.9 254.3 (Rwys 7L-25R, 7R-25L)  
PHOENIX DEP CON  
119.2 281.45

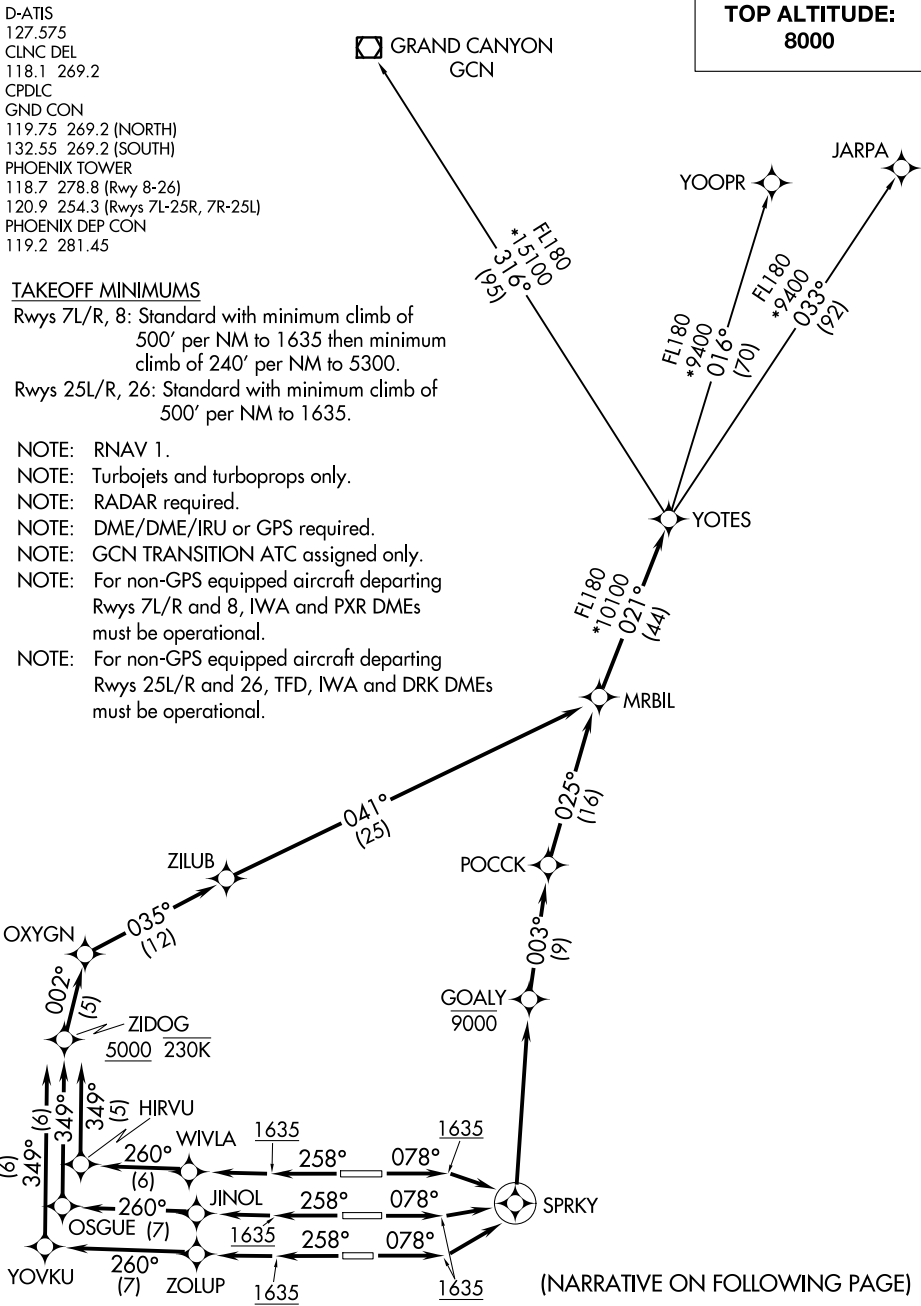
**TOP ALTITUDE:  
8000**

### TAKEOFF MINIMUMS

Rwys 7L/R, 8: Standard with minimum climb of 500' per NM to 1635 then minimum climb of 240' per NM to 5300.

Rwys 25L/R, 26: Standard with minimum climb of 500' per NM to 1635.

- NOTE: RNAV 1.
- NOTE: Turbojets and turboprops only.
- NOTE: RADAR required.
- NOTE: DME/DME/IRU or GPS required.
- NOTE: GCN TRANSITION ATC assigned only.
- NOTE: For non-GPS equipped aircraft departing Rwys 7L/R and 8, IWA and PXR DMEs must be operational.
- NOTE: For non-GPS equipped aircraft departing Rwys 25L/R and 26, TFD, IWA and DRK DMEs must be operational.



SW-4, 22 FEB 2024 to 21 MAR 2024

SW-4, 22 FEB 2024 to 21 MAR 2024

(NARRATIVE ON FOLLOWING PAGE)

NOTE: Chart not to scale.

# MRBIL ONE DEPARTURE (RNAV)

(MRBIL1.MRBIL) 24MAY18

PHOENIX, ARIZONA  
PHOENIX SKY HARBOR INTL (PHX)



DEPARTURE ROUTE DESCRIPTION

TAKEOFF RUNWAYS 7L/R, 8: Climb heading 078° to 1635, then direct to SPRKY, then turn left direct to cross GOALY at/below 9000, then on track 003° to POCCK, then on track 025° to MRBIL, thence. . . .

TAKEOFF RUNWAY 25L: Climb heading 258° to 1635, then direct ZOLUP, then on track 260° to YOVKU, then on track 349° to cross ZIDOG at/above 5000 and at/below 230K, then on track 002° to OXYGN, then on track 035° to ZILUB, then on track 041° to MRBIL, thence. . . .

TAKEOFF RUNWAY 25R: Climb heading 258° to 1635, then direct JINOL, then on track 260° to OSGUE, then on track 349° to cross ZIDOG at/above 5000 and at/below 230K, then on track 002° to OXYGN, then on track 035° to ZILUB, then on track 041° to MRBIL, thence. . . .

TAKEOFF RUNWAY 26: Climb heading 258° to 1635, then direct WIVLA, then on track 260° to HIRVU, then on track 349° to cross ZIDOG at/above 5000 and at/below 230K, then on track 002° to OXYGN, then on track 035° to ZILUB, then on track 041° to MRBIL, thence. . . .

. . . .on track 021° to YOTES, then on (transition). Maintain 8000, expect higher altitude 3 minutes after departure.

GRAND CANYON TRANSITION (MRBIL1.GCN)

JARPA TRANSITION (MRBIL1.JARPA)

YOOPR TRANSITION (MRBIL1.YOOPR)

SW-4, 22 FEB 2024 to 21 MAR 2024

SW-4, 22 FEB 2024 to 21 MAR 2024