

PHOENIX APP CON
124.1 256.9
PHOENIX TOWER
118.7 278.8 (Rwy 8-26)
120.9 254.3 (Rwy 7R-25L, 7L-25R)
GND CON
119.75 269.2 (North)
132.55 269.2 (South)
D-ATIS
127.575

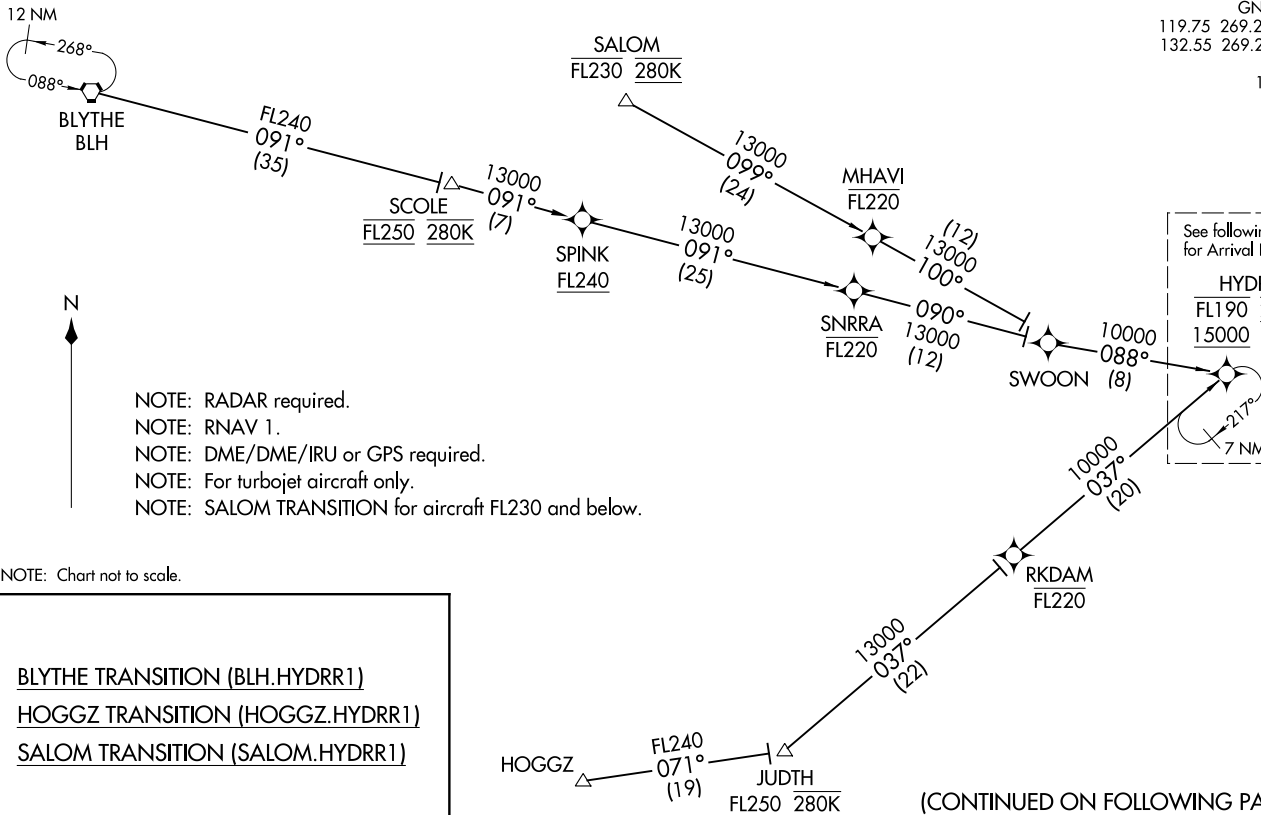
(HYDRR.HYDRR1) 17117

AL-322 (FAA)
Transition Routes

PHOENIX SKY HARBOR INTL (PHX)
PHOENIX, ARIZONA

PHOENIX APP CON
124.1 256.9
PHOENIX TOWER
118.7 278.8 (Rwy 8-26)
120.9 254.3 (Rwy 7R-25L, 7L-25R)
GND CON
119.75 269.2 (North)
132.55 269.2 (South)
D-ATIS
127.575

See following page
for Arrival Routes.
HYDRR
FL190 265K
15000



NOTE: RADAR required.
NOTE: RNAV 1.
NOTE: DME/DME/IRU or GPS required.
NOTE: For turbojet aircraft only.
NOTE: SALOM TRANSITION for aircraft FL230 and below.

NOTE: Chart not to scale.

BLYTHE TRANSITION (BLH.HYDRR1)
HOGGZ TRANSITION (HOGGZ.HYDRR1)
SALOM TRANSITION (SALOM.HYDRR1)

(CONTINUED ON FOLLOWING PAGE)

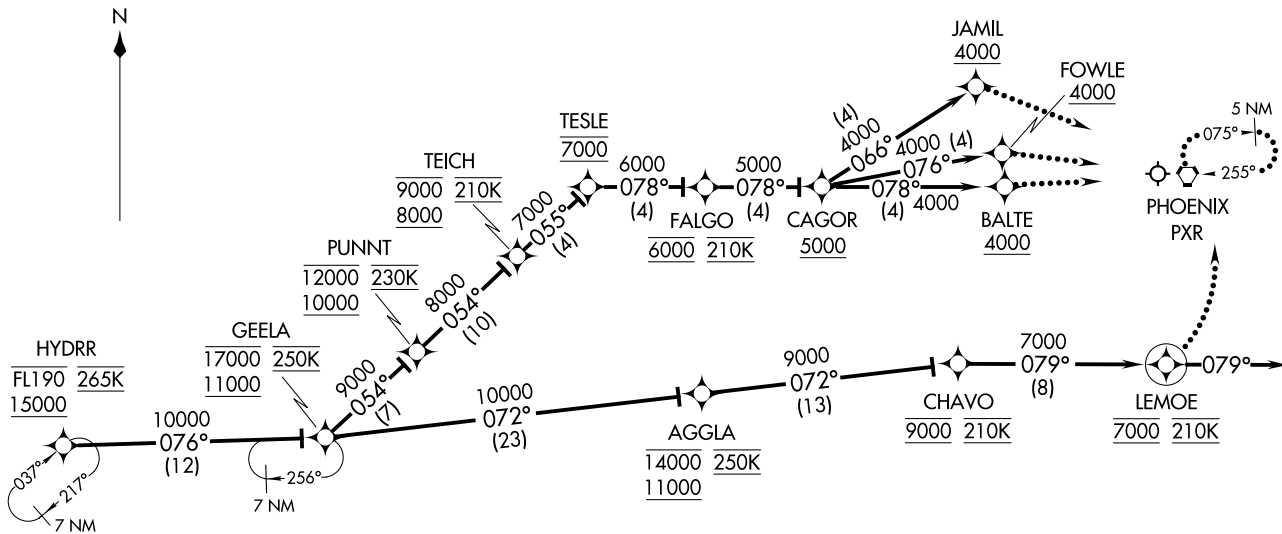
HYDRR ONE ARRIVAL (RNAV)
(HYDRR.HYDRR1) 18SEP14

Transition Routes

PHOENIX, ARIZONA
PHOENIX SKY HARBOR INTL (PHX)

NOTE: RADAR required.
NOTE: RNAV 1.
NOTE: DME/DME/IRU or GPS required.
NOTE: For turbojet aircraft only.

PHOENIX APP CON 124.1 256.9
PHOENIX TOWER 118.7 278.8 (Rwy 8-26)
120.9 254.3 (Rwy 7R-25L, 7L-25R)
GND CON 119.75 269.2 (North)
132.55 269.2 (South)
D-ATIS 127.575



(NARRATIVE ON FOLLOWING PAGE)

NOTE: Chart not to scale.

HYDRR ONE ARRIVAL (RNAV) Arrival Routes
(HYDRR, HYDRR1) 18SEP14

PHOENIX SKY HARBOR INTL (PHX)
PHOENIX, ARIZONA

(HYDRR, HYDRR1) 17117
HYDRR ONE ARRIVAL (RNAV) Arrival Routes
AL-322 (FAA)

PHOENIX SKY HARBOR INTL (PHX)
PHOENIX, ARIZONA