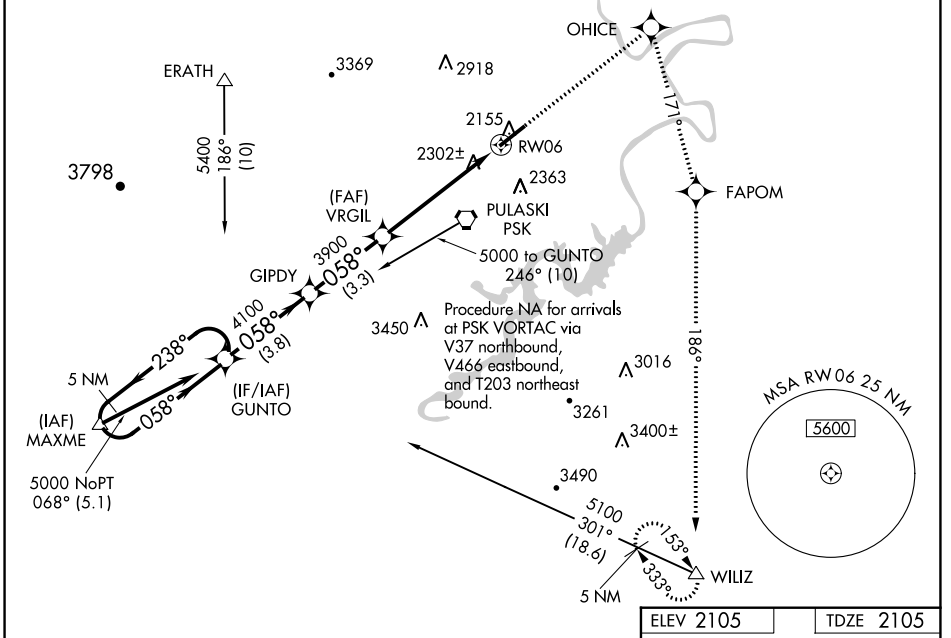


WAAS CH 87015 W06A	APP CRS 058°	Rwy Idg TDZE Apt Elev	6201 2105 2105
--	------------------------	-----------------------------	---

RNAV (GPS) RWY 6

NEW RIVER VALLEY (PSK)

RNP APCH.		<p>For uncompensated Baro-VNAV systems, LNAV/VNAV NA below -19°C or above 44°C. When local altimeter setting not received, use Blacksburg altimeter setting and increase all DA 36 feet, and all MDA 40 feet. VDP and Baro-VNAV NA when using Blacksburg altimeter setting. Inop table does not apply to LPV all Cats and LNAV Cats A and B. For inop MALSR, increase LNAV Cat C visibility to 1/4 SM. Circling NA for Cat D northwest of Rwy 6-24.</p>	
<p>MALSR</p>		<p>MISSED APPROACH: Climb to 6000 direct OHICE and right turn via track 171° to FAPOM and via track 186° to WILIZ and hold.</p>	
AWOS-3 127.375	ROANOKE APP CON 126.0 339.8	ROANOKE CLNC DEL 121.7	UNICOM 122.7 (CTAF)



5 NM Holding Pattern					
5000 ← 238° 058° →		<p>VGSI and RNAV glidepath not coincident (VGSI Angle 3.00/TCH 58).</p> <p>* LNAV only.</p>			
GP 3.00° TCH 58		<p>*1.3 NM to RW06</p>			
3.8 NM		3.3 NM		4.1 NM	
3.3 NM		1.3 NM		0.5° UP	
CATEGORY	A	B	C	D	
LPV DA	2305-1		200 (200-1)		
LNAV/DA	2597-1¼		492 (500-1¼)		
LNAV MDA	2560-1		455 (500-1)		
CIRCLING	2620-1 515 (600-1)	2680-1 575 (600-1)	2780-2 675 (700-2)	2780-2¼ 675 (700-2¼)	
<p>HIRL Rwy 6-24</p> <p>REIL Rwy 24</p>					

NE-3, 22 FEB 2024 to 21 MAR 2024

NE-3, 22 FEB 2024 to 21 MAR 2024