

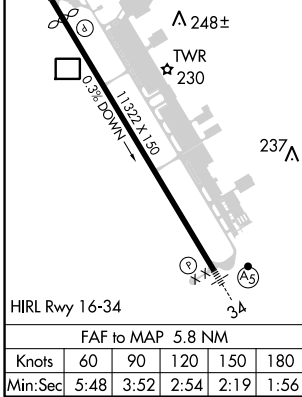
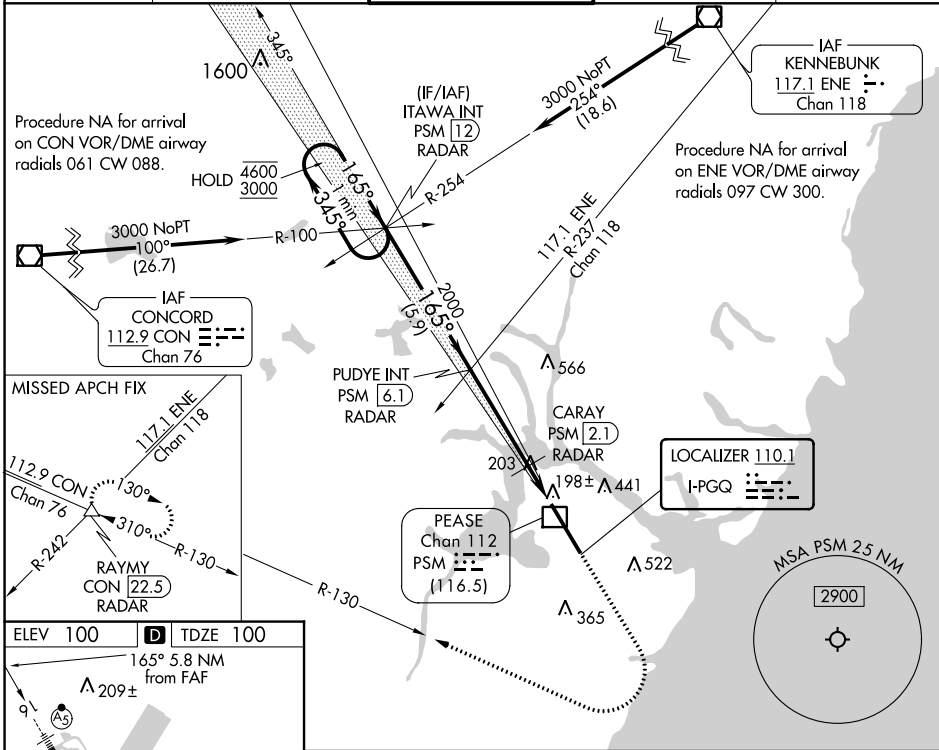
LOC I-PGQ 110.1	APP CRS 165°	Rwy ldg 10518 TDZE 100 Apt Elev 100
---------------------------	------------------------	--

ILS or LOC RWY 16

PORTSMOUTH INTL AT PEASE (PSM)

DME or RADAR required.		MALSR	MISSED APPROACH: Climb to 1500 then climbing right turn to 3000 on CON VOR/DME R-130 to RAYMY INT/CON VOR/DME 22.5 DME/RADAR and hold.
<p>⚠ Circling NA east of Rwy 16-34. DME from PSM DME. Simultaneous reception of I-PGQ and PSM DME required. For inop ALS, increase S-ILS 16 Cat D visibility to RVR 4000; increase S-LOC 16 Cat C/D/E visibility to RVR 5500. * RVR 1800 authorized with use of FD or AP or HUD to DA (NA when using Rochester altimeter setting).</p>			

ATIS 132.05 273.5	BOSTON APP CON 125.05 269.4	PORTSMOUTH TOWER 128.4 269.0	GND CON 120.95 275.8	CLNC DEL 335.8
-----------------------------	---------------------------------------	--	--------------------------------	--------------------------



VGSI and ILS glidepath not coincident (VGSI Angle 3.00/TCH 72).

One Minute Holding Pattern	ITAWA INT PSM [12] RADAR	PUDYE INT PSM [6.1] RADAR	CARAY PSM [2.1] RADAR PSM [1.3] PSM [0.3]	1500	3000	RAYMY
				↑	↻	△
				CON	R-130	
GS 3.00° TCH 55						
CATEGORY	A	B	C	D	E	
S-ILS 16*	300/24 200 (200-½)					
S-LOC 16	480/24 380 (400-½)		480/35 380 (400-¾)			
CIRCLING	540-1	560-1	680-1½	780-2¼	800-2½	
	440 (500-1)	460 (500-1)	580 (600-1½)	680 (700-2¼)	700 (700-2½)	

NE-1, 22 FEB 2024 to 21 MAR 2024

NE-1, 22 FEB 2024 to 21 MAR 2024