

NDB/DME UKS 393	APP CRS 084°	Rwy Idg TDZE Apt Elev	N/A N/A 12
Chan 100 (115.3)			

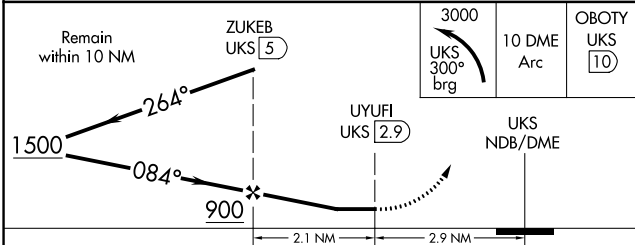
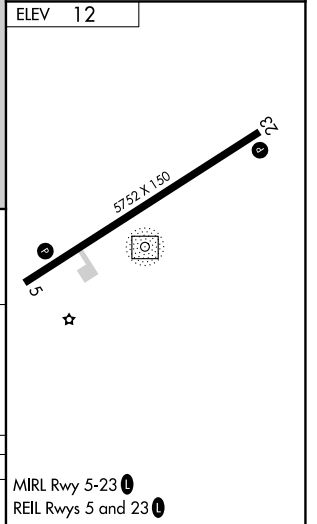
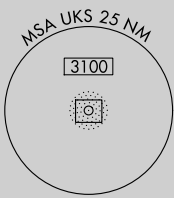
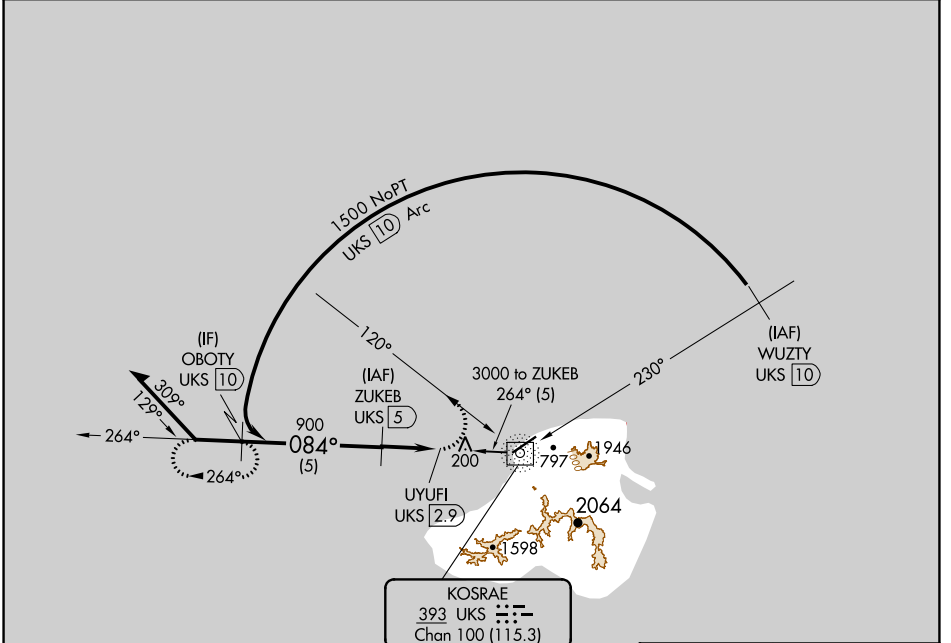
NDB-A
KOSRAE (TTK)(PTSA)

DME required.

▽ Circling NA southeast of Rwy 5-23. Obtain local altimeter setting on CTAF; when not received, procedure NA.
▲ NA No controlled airspace below 5500 feet.

MISSED APPROACH: Climbing left turn to 3000 on UKS NDB/DME 300° bearing and 10 DME Arc to OBOTY/10 DME.

KOSRAE RADIO
123.6 (CTAF) 0



CATEGORY	A	B	C	D
CIRCLING	500-3	488 (500-3)		580-3 568 (600-3)

APP CRS 213°	Rwy Idg 5752
	TDZE 11
	Apt Elev 11

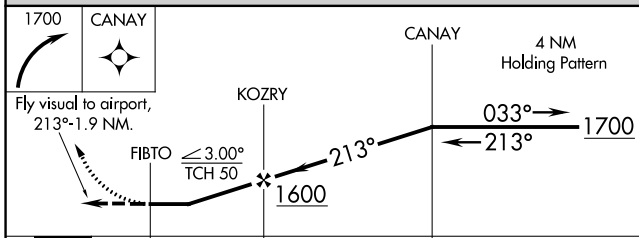
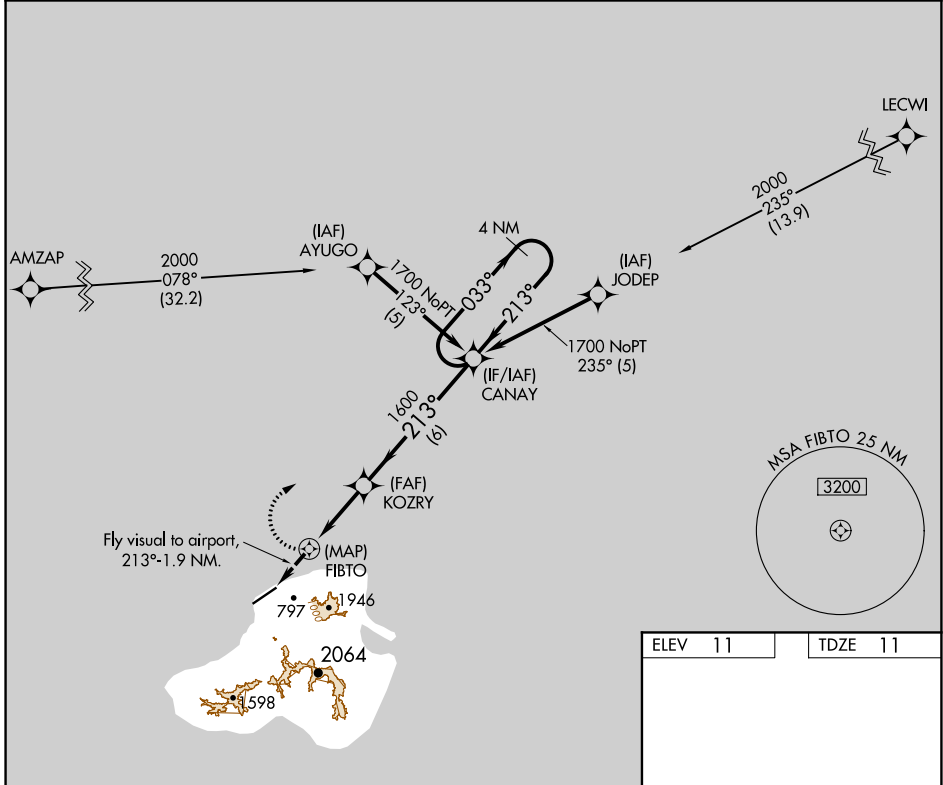
RNAV (GPS) RWY 23

KOSRAE (TTK)(PTSA)

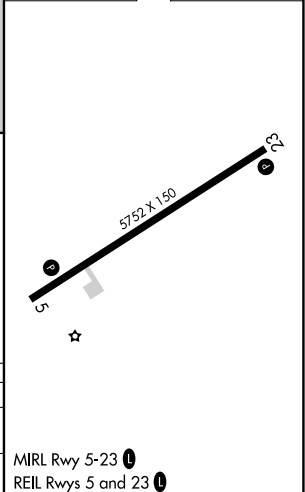
⚠ Circling not authorized southeast of Rwy 5-23. Obtain local altimeter setting on CTAF; when not received, procedure not authorized. DME/DME RNP-0.3 NA. No controlled airspace below 5500.

MISSED APPROACH: Climbing right turn to 1700 direct CANAY WP and hold.

KOSRAE RADIO
123.6 (CTAF) **0**



ELEV 11	TDZE 11
---------	---------



CATEGORY	A	B	C	D
LNVA MDA	800-2	789 (800-2)	800-2½ 789 (800-2¼)	800-2½ 789 (800-2½)
CIRCLING	800-2	789 (800-2)	800-2½ 789 (800-2¼)	800-2½ 789 (800-2½)

MIRL Rwy 5-23 **0**
REIL Rwy 5 and 23 **0**

PAC, 07 OCT 2021 to 02 DEC 2021

PAC, 07 OCT 2021 to 02 DEC 2021

APP CRS	Rwy Idg	5752
058°	TDZE	10
	Apt Elev	11

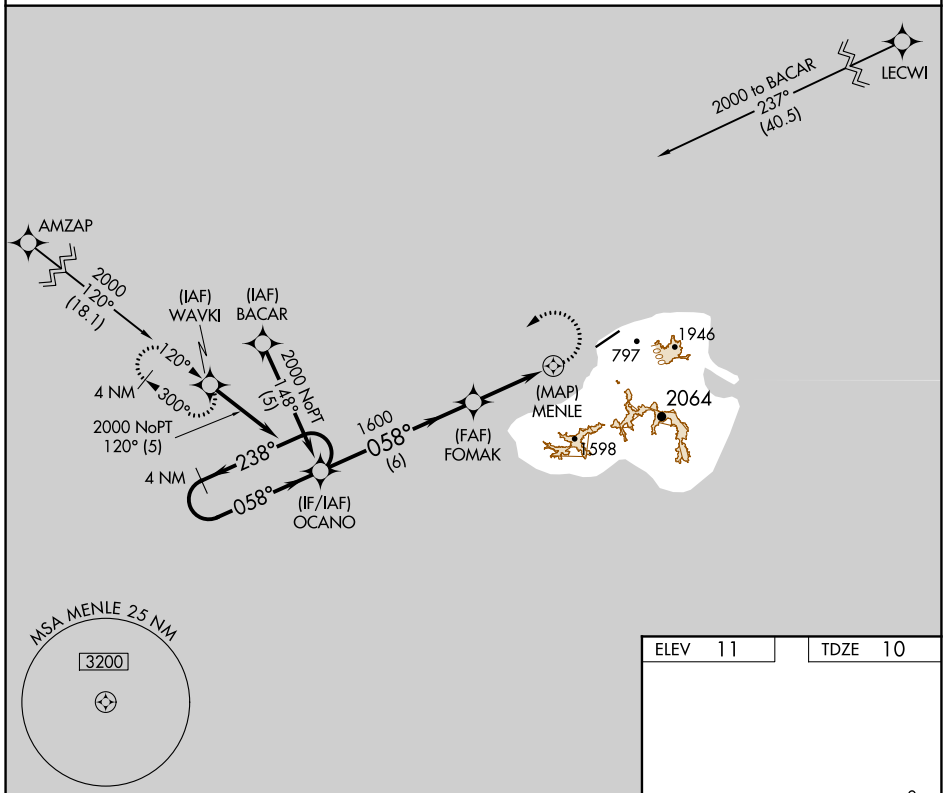
RNAV (GPS) RWY 5

KOSRAE (TTK)(PTSA)

⚠ Circling not authorized southeast of Rwy 5-23.
⚠ Obtain local altimeter setting on CTAF; when not received, procedure not authorized. DME/DME RNP-0.3 NA.
 No controlled airspace below 5500.

MISSED APPROACH: Climbing left turn to 2000 direct WAVKI WP and hold.

KOSRAE RADIO
123.6 (CTAF) **📻**



PAC, 07 OCT 2021 to 02 DEC 2021

PAC, 07 OCT 2021 to 02 DEC 2021

ELEV 11	TDZE 10
---------	---------

CATEGORY	A	B	C	D
LNAV MDA	460-2 450 (500-2)			
CIRCLING	520-2 509 (600-2)		580-2 569 (600-2)	

MIRL Rwy 5-23 **📻**
 REIL Rwys 5 and 23 **📻**

