

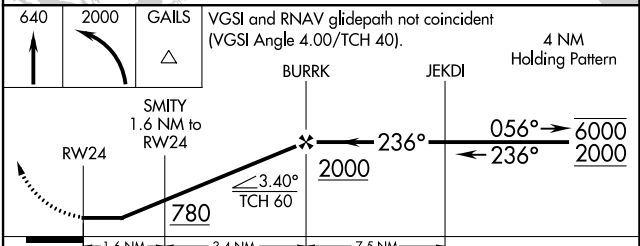
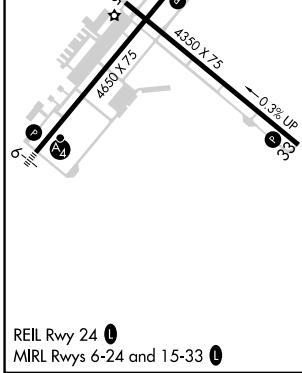
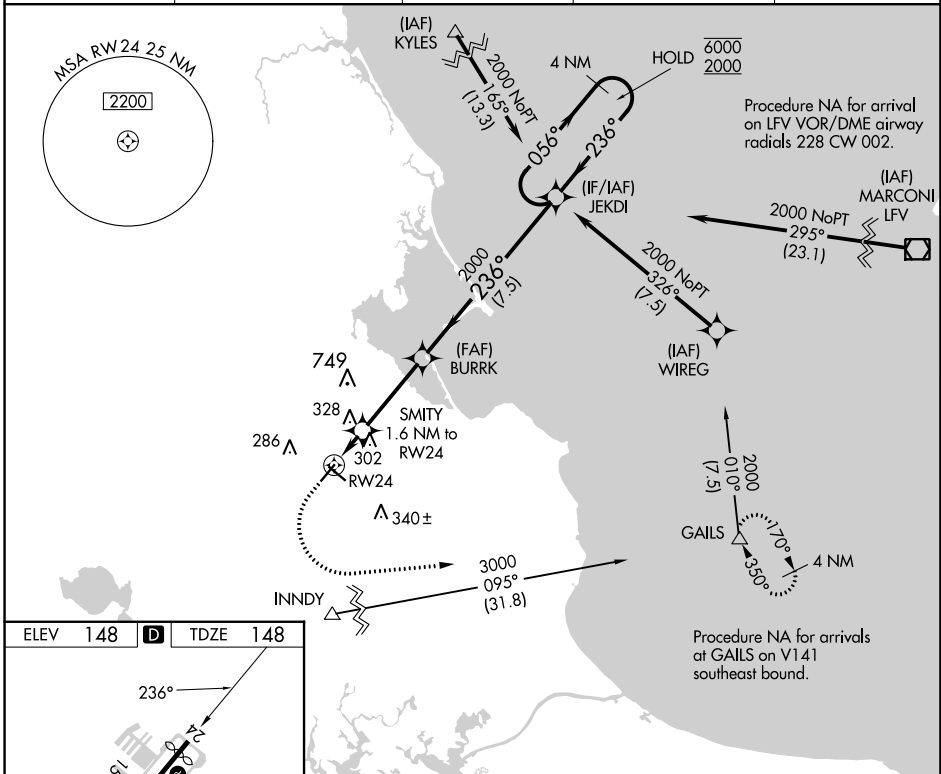
APP CRS 236°	Rwy Idg 4350 TDZE 148 Apt Elev 148
------------------------	---

RNAV (GPS) RWY 24

PLYMOUTH MUNI (PYM)

RNP APCH - GPS.		MISSED APPROACH: Climb to 640 then climbing left turn to 2000 direct GAILS and hold.		
<p>▽ Rwy 24 helicopter visibility reduction below 1 SM NA. ▲ Straight-in Rwy 24 NA at night. Circling Rwy 15, 24 NA at night.</p>				

ASOS 135.625	BOSTON APP CON * 118.2 284.6	CLNC DEL 127.75	UNICOM 122.725 (CTAF)	122.9 0
------------------------	--	---------------------------	---------------------------------	-----------------------



CATEGORY	A	B	C	D
LNVA MDA	580-1	432 (500-1)	580-1¼ 432 (500-1¼)	NA
C CIRCLING	620-1 472 (500-1)	640-1 492 (500-1)	760-1¾ 612 (700-1¾)	NA

NE-1, 22 FEB 2024 to 21 MAR 2024

NE-1, 22 FEB 2024 to 21 MAR 2024