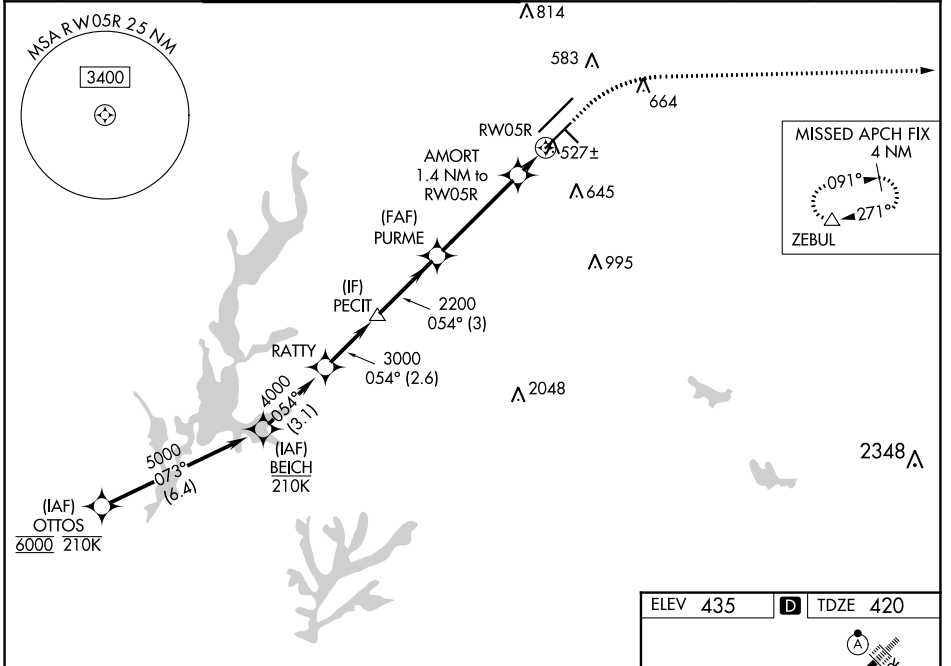


|  |                        |   |
|--|------------------------|---|
| WAAS<br>CH <b>90213</b><br><b>W05B</b> | APP CRS<br><b>054°</b> | Rwy Idg <b>7500</b><br>TDZE <b>420</b><br>Apt Elev <b>435</b> |
|--|------------------------|---|

# RNAV (GPS) Y RWY 5R

RALEIGH-DURHAM INTL (RDU)

|   |                 |  |                           |                                      |                           |          |       |
|---|-----------------|--|---------------------------|--------------------------------------|---------------------------|----------|-------|
| RNP APCH-GPS.   |                 | MISSED APPROACH:<br>Climb to 1000 then<br>climbing right turn to<br>2600 direct ZEBUL<br>and hold. |                           |                                      |                           |          |       |
| Simultaneous approach authorized. LNAV procedure NA during simultaneous operations.<br>For uncompensated Baro-VNAV systems, LNAV/VNAV NA below -12°C or above 54°C.<br>Use of FD or AP required during simultaneous operations. For inop ALS, increase<br>LNAV/VNAV all Cats visibility to RVR 4500 and LNAV Cats C/D visibility to RVR 5500.<br># RVR 1800 authorized with use of FD or AP or HUD to DA. |                 | MALSR<br>  |                           |                                      |                           |          |       |
| D-ATIS  | RALEIGH APP CON | (EAST) RALEIGH TOWER   | (WEST) RALEIGH TOWER      | (EAST) GND CON                       | (WEST) GND CON            | CLNC DEL | CPDLC |
| 123.8   | 127.675 307.9   | 127.45 257.8<br>Rwys 5R-23L and 14-32  | 119.3 257.8<br>Rwy 5L-23R | 121.9 348.6<br>Rwys 5R-23L and 14-32 | 121.7 348.6<br>Rwy 5L-23R | 120.1    |       |



SE-2, 22 FEB 2024 to 21 MAR 2024

SE-2, 22 FEB 2024 to 21 MAR 2024

|                                     |        |               |  |               |  |               |  |                           |  |               |  |
|-------------------------------------|--------|---------------|--|---------------|--|---------------|--|---------------------------|--|---------------|--|
| BEICH<br>5000<br>GP 3.00°<br>TCH 56 |        | RATTY<br>4000 |  | PECIT<br>3000 |  | PURME<br>2200 |  | AMORT<br>1.4 NM to RWY 5R |  | RWY 5R<br>900 |  |
| 3.1 NM                              |        | 2.6 NM        |  | 3 NM          |  | 4.1 NM        |  | 1.4 NM                    |  |               |  |
| CATEGORY                            | A      | B             |  | C             |  | D             |  |                           |  |               |  |
| LPV DA                              |        | #620/24       |  | 200 (200-½)   |  |               |  |                           |  |               |  |
| LNAV/VNAV DA                        |        | 688/24        |  | 268 (300-½)   |  |               |  |                           |  |               |  |
| LNAV MDA                            | 780/24 | 360 (400-½)   |  | 780/40        |  | 360 (400-¾)   |  |                           |  |               |  |
| CIRCLING                            | 960-1  | 525 (600-1)   |  | 1020-1½       |  | 585 (600-1½)  |  | 1180-2½                   |  | 745 (800-2½)  |  |

