

TARVR ONE ARRIVAL (RNAV)

AL-346 (FAA)

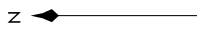
RENO/TAHOE INTL (RNO)
RENO, NEVADA

SW-4, 22 FEB 2024 to 21 MAR 2024

SW-4, 22 FEB 2024 to 21 MAR 2024

NORCAL APP CON
119.2 279.55
D-AIS
135.8 363.0
RENO TOWER
118.7 257.8

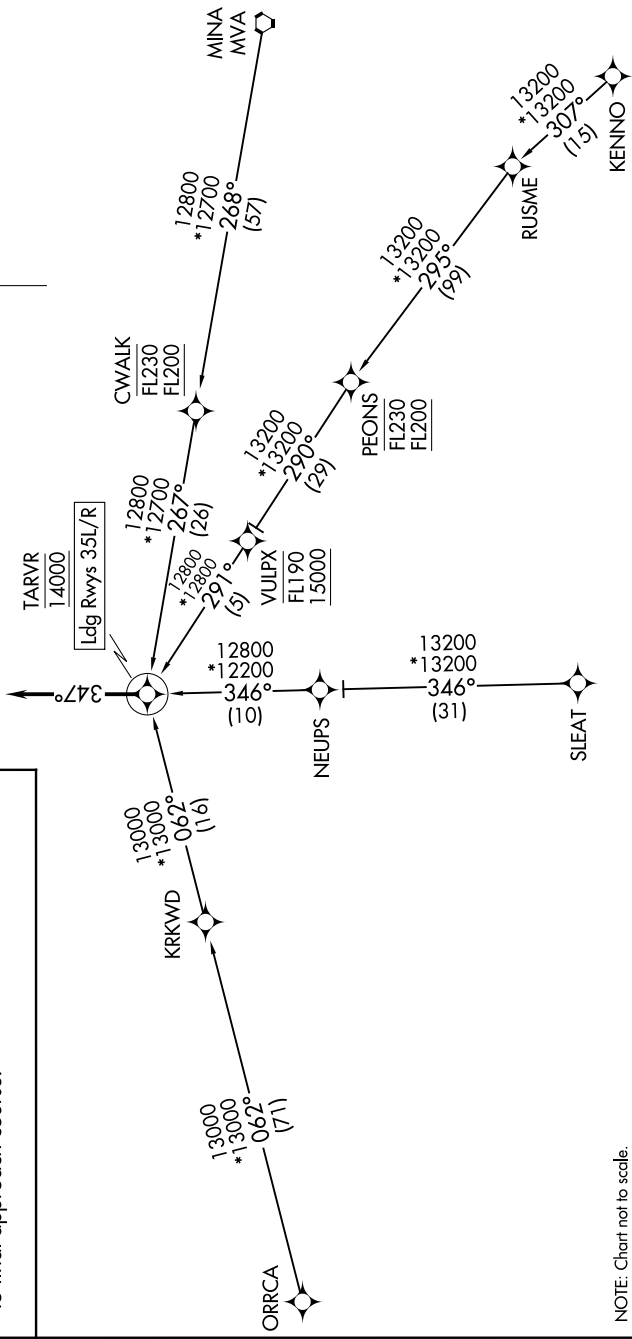
RNAV 1 - GPS
RADAR required



ARRIVAL ROUTE DESCRIPTION

KENNO TRANSITION (KENNO.TARVR1)
MINA TRANSITION (MVA.TARVR1)
ORRCA TRANSITION (ORRCA.TARVR1)
SLEAT TRANSITION (SLEAT.TARVR1)

From TARVR, then on heading 347°, expect assigned instrument approach for Rwys 35L/R or RADAR vectors to final approach course.



TARVR ONE ARRIVAL (RNAV)

RENO, NEVADA
RENO/TAHOE INTL (RNO)

NOTE: Chart not to scale.