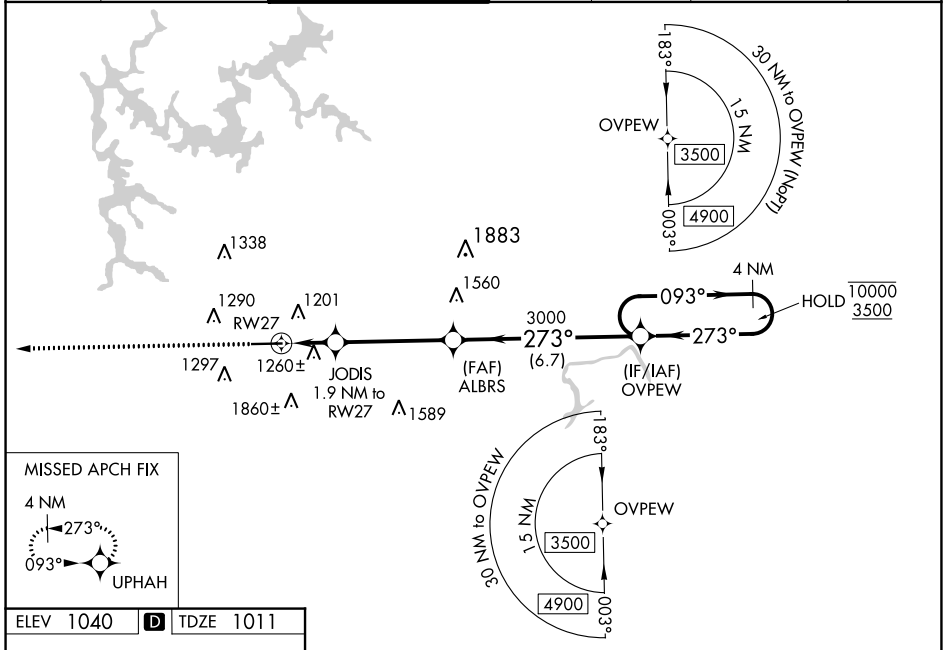


WAAS CH <b>97308</b> <b>W27A</b>	APP CRS <b>273°</b>	Rwy Idg TDZE <b>1011</b> Apt Elev <b>1040</b>	<b>5374</b>
--	------------------------	---	-------------

# RNAV (GPS) RWY 27

COBB COUNTY INTL/MCCOLLUM FLD (RYY)

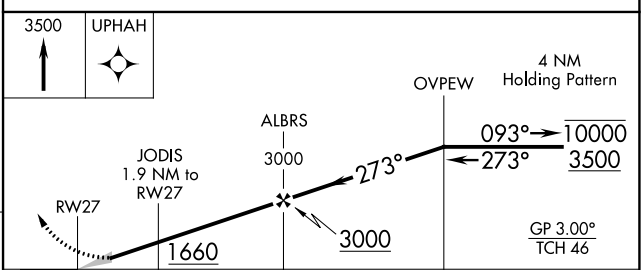
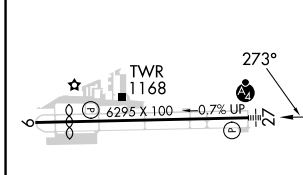
RNP APCH-GPS.				MALSF		MISSED APPROACH: Climb to 3500 direct UPHAH and hold.	
<p>⚠ Inop table does not apply to LPV. For uncompensated Baro-VNAV systems, LNAV/VNAV NA below -17°C or above 54°C. For inop ALS, increase LNAV/VNAV all Cats and LNAV Cats C and D visibility to 1½ SM. Circling Rwy 9 NA at night.</p>							
ATIS <b>128.125</b>	ATLANTA APP CON <b>121.0 268.7</b>	MCCOLLUM TOWER ★ <b>125.9 (CTAF) 0</b>	GND CON <b>119.0</b>	CLNC DEL <b>119.0</b>	CLNC DEL <b>121.0 268.7</b> (When twr closed)	UNICOM <b>122.7</b>	



SE-4, 22 FEB 2024 to 21 MAR 2024

SE-4, 22 FEB 2024 to 21 MAR 2024

ELEV <b>1040</b>	<b>D</b>	TDZE <b>1011</b>
------------------	----------	------------------



		A	B	C	D
CATEGORY					
LPV DA		1211-¾	200 (200-¾)		
LNAV/VNAV DA		1520-1¼	509 (500-1¼)		
LNAV MDA		1520-¾	509 (500-¾)	1520-1¼	509 (500-1¼)
<b>C</b> CIRCLING		1800-1	760 (800-1)	2180-3	1140 (1200-3)