


WAAS CH 53521 W25A	APP CRS 255°	Rwy Idg TDZE Apt Elev	6001 235 244
--	------------------------	-----------------------------	---

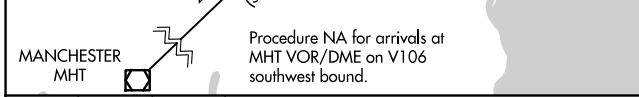
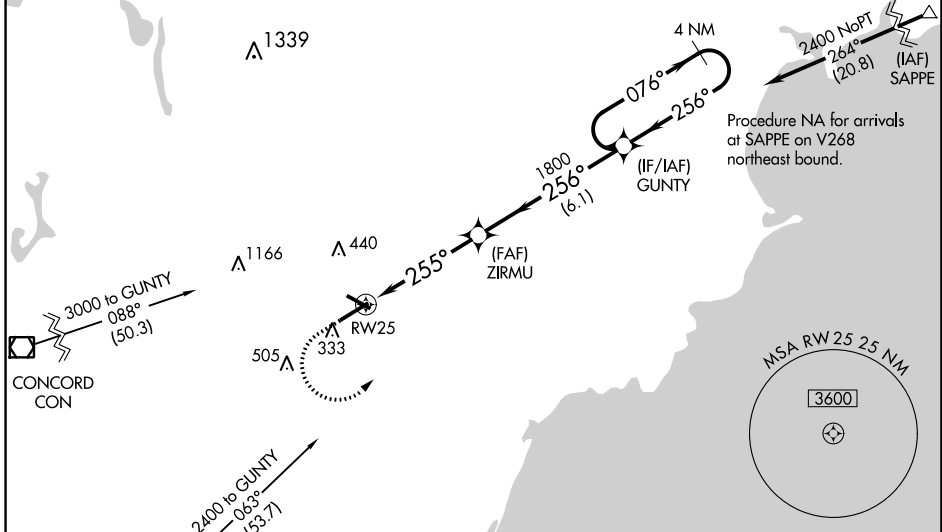
RNAV (GPS) RWY 25

SANFORD SEACOAST RGNL (SFM)

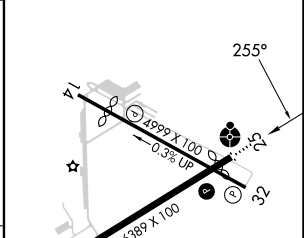
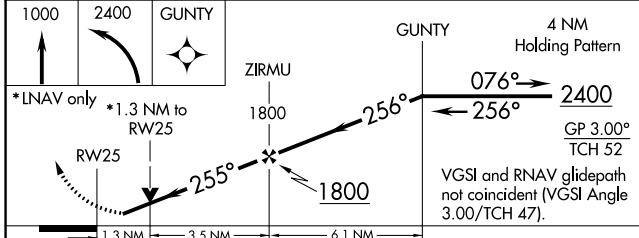
Baro-VNAV and VDP NA when using Rochester, NH altimeter setting. For uncompensated Baro-VNAV systems, LNAV/VNAV NA below -15°C (5°F) or above 54°C (130°F). Helicopter visibility reduction below 3/4 SM NA. DME/DME RNP-0.3 NA. Inop table does not apply to LPV or LNAV Cats A/B. For inop ODALS, increase LNAV/VNAV all Cats visibility to 1 1/2 and LNAV Cats C/D visibility to 1 3/8. When local altimeter setting not received, use Rochester, NH altimeter setting; increase LPV DA to 534; increase LNAV/VNAV DA to 713 and visibility all Cats 1/2 SM; increase all MDA 40 feet, LNAV Cats C/D visibility 1/2 SM, and Circling Cat C visibility 1/2 SM; for inop ODALS, increase LNAV/VNAV all Cats visibility to 1 3/8 and LNAV Cat C/D visibility to 1 3/8.


ODALS
 ...
MISSED APPROACH:
 Climb to 1000 then climbing left turn to 2400 direct GUNTY and hold.

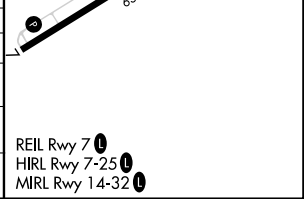
AWOS-3PT 120.025	PORTLAND APP CON* 119.75 269.35	CINC DEL 121.725	UNICOM 123.075 (CTAF) 
----------------------------	---	----------------------------	---



ELEV 244	TDZE 235
-----------------	-----------------



CATEGORY	A	B	C	D
LPV DA	496-1 261 (300-1)			
LNAV/DA VNAV	675-1 3/8 440 (500-1 3/8)			
LNAV MDA	680-1 445 (500-1)		680-1 1/8 445 (500-1 1/8)	
 CIRCLING	760-1 516 (600-1)		1180-2 3/4 936 (1000-2 3/4) 1240-3 996 (1000-3)	



NE-1, 22 FEB 2024 to 21 MAR 2024

NE-1, 22 FEB 2024 to 21 MAR 2024