

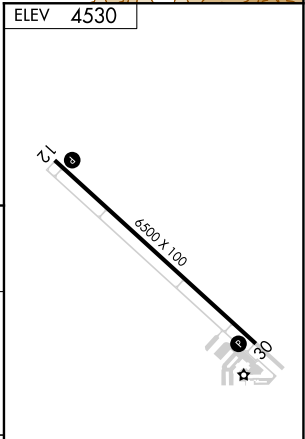
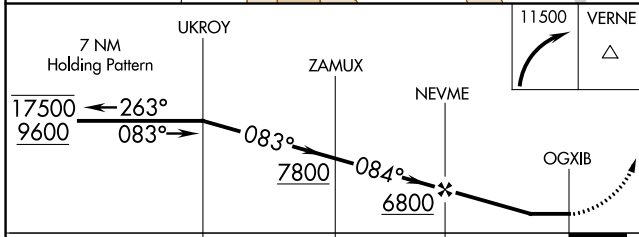
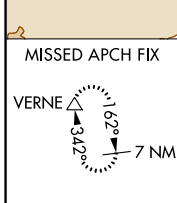
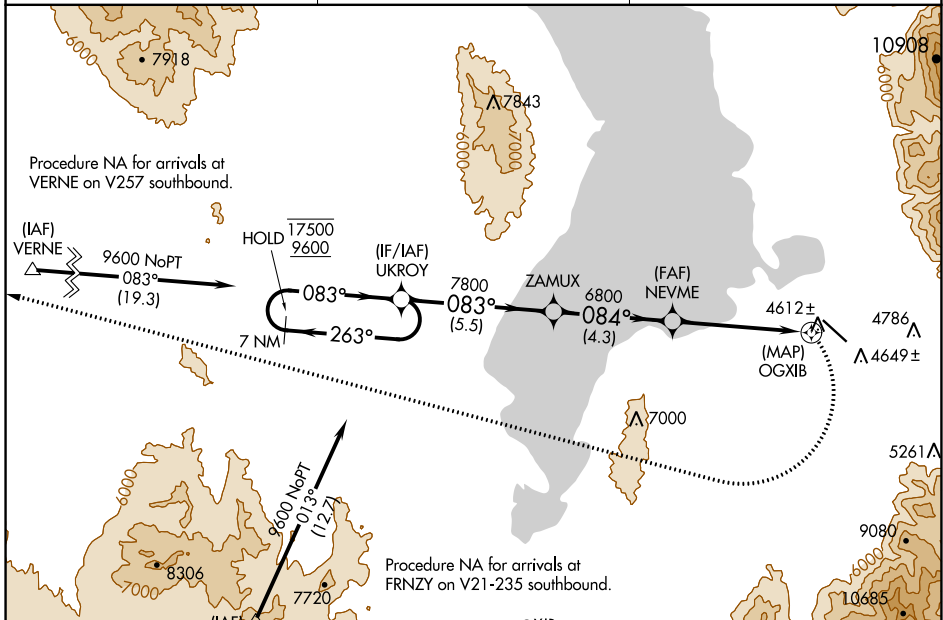
APP CRS 084°	Rwy Idg TDZE Apt Elev 4530	N/A N/A 4530
------------------------	--	---

RNAV (GPS)-A

SPANISH FORK MUNI/WOODHOUSE FLD (SPK)

RNP APCH-GPS.	MISSED APPROACH: (Do not exceed 185K until turn completion) Climbing right turn to 11500 direct VERNE and hold.
<p>When local altimeter setting not received, use Provo altimeter setting and increase all MDAs 20 feet.</p> <p>NA -21°C</p>	

AWOS-3PT 119.275	SALT LAKE CITY APP CON 118.85 233.7	CTAF 122.9
----------------------------	---	----------------------



CATEGORY	A	B	C	D
CIRCLING	6200-1¼ 1670 (1700-1¼)	6200-1½ 1670 (1700-1½)	6200-3 1670 (1700-3)	

MIRL Rwy 12-30

REIL Rwy 12 and 30

SW-4, 22 FEB 2024 to 21 MAR 2024

SW-4, 22 FEB 2024 to 21 MAR 2024