

BLTWY SEVEN DEPARTURE (RNAV)

CTAF
122.9
HOUSTON DEP CON
134.45 284.0

**TOP ALTITUDE:
ASSIGNED BY ATC**

NOTE: RADAR required.
NOTE: DME/DME/IRU or GPS required.
NOTE: RNAV 1.

TAKEOFF MINIMUMS

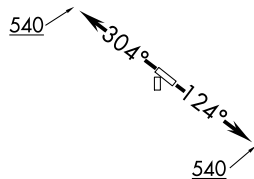
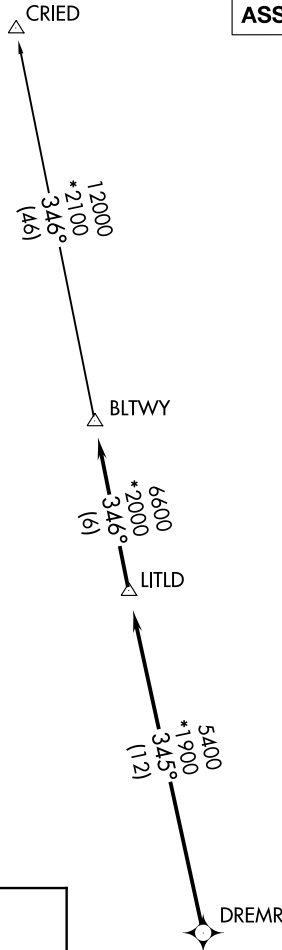
Rwys 17, 35: NA - Environmental
Rwys 12, 30: Standard with minimum climb
of 500' per NM to 540.

DEPARTURE ROUTE DESCRIPTION

TAKEOFF RUNWAY 12: Climb on heading 124° to 540 for RADAR vectors to DREMR, thence . . .
TAKEOFF RUNWAY 30: Climb on heading 304° to 540 for RADAR vectors to DREMR, thence . . .

...on track 345° to LITLD, then on track 346° to BLTWY, then on (transition). Maintain ATC assigned altitude. Expect filed altitude 10 minutes after departure.

CRIED TRANSITION (BLTWY7.CRIED)



NOTE: Chart not to scale.

SC-5, 22 FEB 2024 to 21 MAR 2024

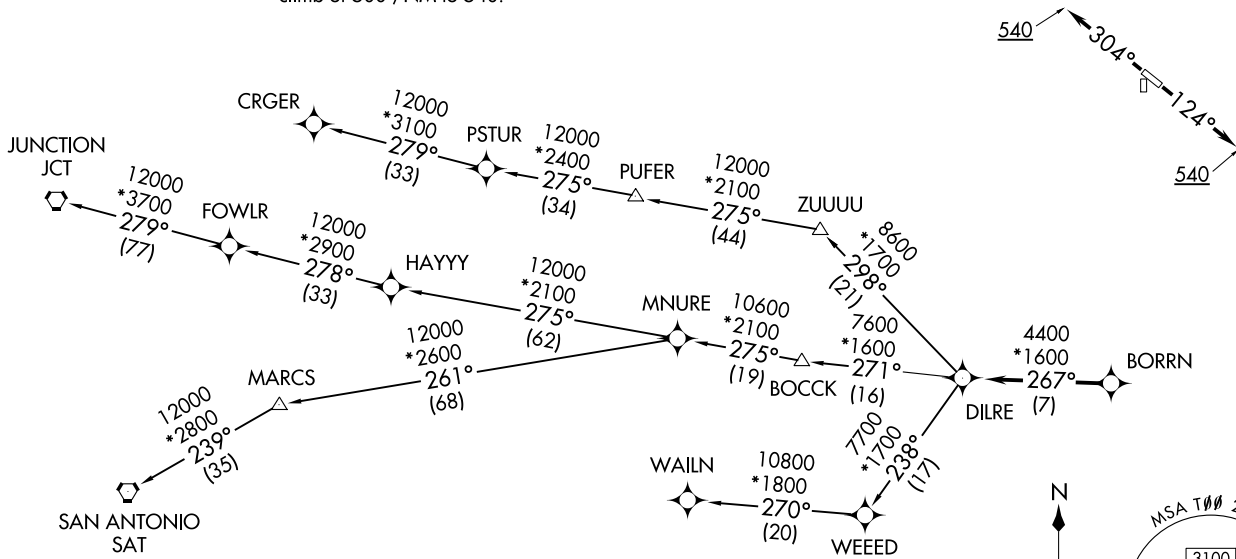
SC-5, 22 FEB 2024 to 21 MAR 2024

**TOP ALTITUDE:
ASSIGNED BY ATC**

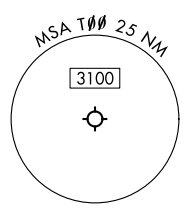
RNAV 1 - DME/DME/IRU or GPS.

RADAR required.

TAKEOFF MINIMUMS
Rwys 17, 35: NA - Environmental.
Rwys 12, 30: Standard with minimum
climb of 500' /NM to 540.



NOTE: CRGER-TRANSITION ATC assigned only
for aircraft departing 54T, AXH, EFD, GLS,
HPY, IWS, LBX, LVJ, SGR, TME, T00, T41.



NOTE: Chart not to scale.

(NARRATIVE ON FOLLOWING PAGE)

BORRN SIX DEPARTURE (RNAV)
(BORRN6, BORRN) 30NOV23

CHAMBERS COUNTY (T00)
ANAHUAC, TEXAS

BORRN SIX DEPARTURE (RNAV)
(BORRN6, BORRN) 23334

CHAMBERS COUNTY (T00)
ANAHUAC, TEXAS

AL-6395 (FAA)

BORRN SIX DEPARTURE (RNAV)



DEPARTURE ROUTE DESCRIPTION

TAKEOFF RUNWAY 12: Climb on heading 124° to 540, for RADAR vectors to BORRN, thence. . . .

TAKEOFF RUNWAY 30: Climb on heading 304° to 540, for RADAR vectors to BORRN, thence. . . .

. . . .on track 267° to DILRE, then on (transition). Maintain ATC assigned altitude. Expect filed altitude 10 minutes after departure.

CRGER TRANSITION (BORRN6.CRGER)

JUNCTION TRANSITION (BORRN6.JCT)

MNURE TRANSITION (BORRN6.MNURE)

SAN ANTONIO TRANSITION (BORRN6.SAT)

WAILN TRANSITION (BORRN6.WAILN)

SC-5, 22 FEB 2024 to 21 MAR 2024

SC-5, 22 FEB 2024 to 21 MAR 2024

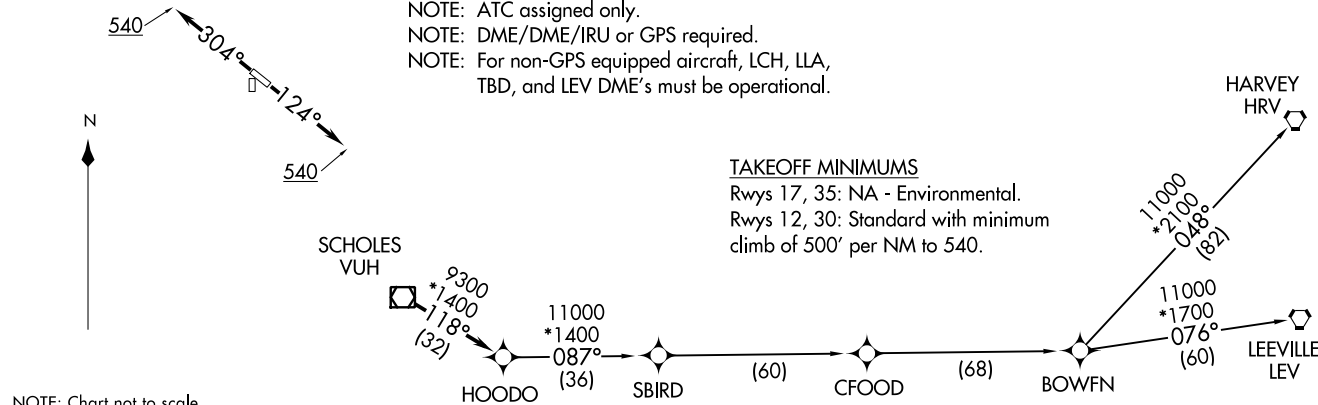
HOODO SEVEN DEPARTURE (RNAV)
(HOODO7.HOODO) 07OCT21

(HOODO7.HOODO) 21280
HOODO SEVEN DEPARTURE (RNAV)
AL-6395 (FAA)

CTAF
122.9
HOUSTON DEP CON
134.45 284.0

**TOP ALTITUDE:
ASSIGNED BY ATC**

NOTE: RNAV 1.
NOTE: RADAR required.
NOTE: ATC assigned only.
NOTE: DME/DME/IRU or GPS required.
NOTE: For non-GPS equipped aircraft, LCH, LLA,
TBD, and LEV DME's must be operational.



TAKEOFF MINIMUMS
Rwys 17, 35: NA - Environmental.
Rwys 12, 30: Standard with minimum
climb of 500' per NM to 540.

NOTE: Chart not to scale.

DEPARTURE ROUTE DESCRIPTION

TAKEOFF RUNWAY 12: Climb on heading 124° to 540, for RADAR vectors to VUH VOR/DME, thence
TAKEOFF RUNWAY 30: Climb on heading 304° to 540, for RADAR vectors to VUH VOR/DME, thence

. . . . on track 118° to HOODO, then on (transition). Maintain ATC assigned altitude.
Expect filed altitude 10 minutes after departure.

- BOWFN TRANSITION (HOODO7.BOWFN)
- CFOOD TRANSITION (HOODO7.CFOOD)
- HARVEY TRANSITION (HOODO7.HRV)
- LEEVILLE TRANSITION (HOODO7.LEV)
- SBIRD TRANSITION (HOODO7.SBIRD)

CHAMBERS COUNTY (TMM)
ANAHUAC, TEXAS

CHAMBERS COUNTY (TMM)
ANAHUAC, TEXAS

(INDIE8.INDIE) 21280

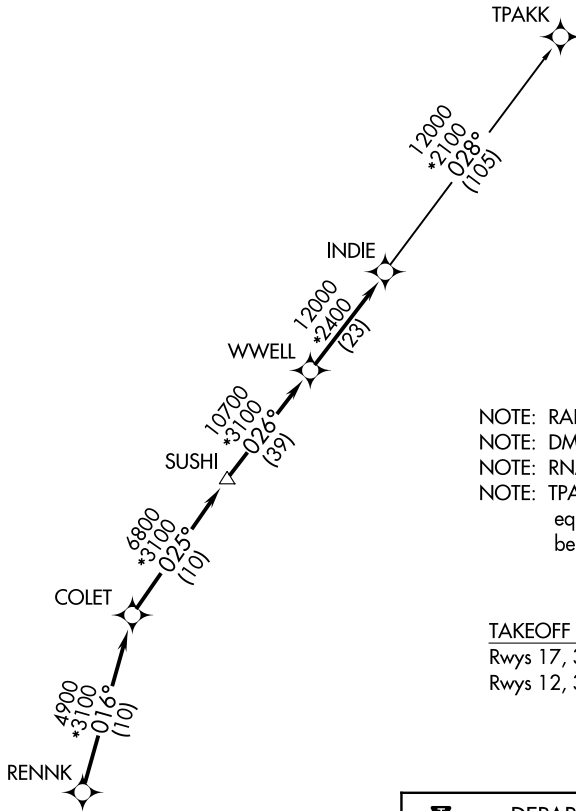
AL-6395 (FAA)

CHAMBERS COUNTY (T00)
ANAHUAC, TEXAS

INDIE EIGHT DEPARTURE (RNAV)

CTAF
122.9
HOUSTON DEP CON
134.45 284.0

**TOP ALTITUDE:
ASSIGNED BY ATC**



- NOTE: RADAR required.
- NOTE: DME/DME/IRU or GPS required.
- NOTE: RNAV 1.
- NOTE: TPAKK TRANSITION: For non GPS equipped aircraft TNV DME must be operational.

TAKEOFF MINIMUMS

- Rwys 17, 35: NA-Environmental
- Rwys 12, 30: Standard with minimum climb of 500' per NM to 540.



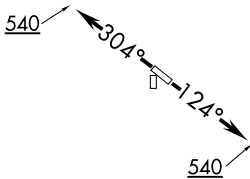
DEPARTURE ROUTE DESCRIPTION

TAKEOFF RUNWAY 12: Climb on heading 124° to 540 for RADAR vectors to RENNK, then

TAKEOFF RUNWAY 30: Climb on heading 304° to 540 for RADAR vectors to RENNK, then

. . . . on track 016° to COLET, then on track 025° to SUSHI, then on track 026° to WWELL, then on track 026° to INDIE, then on (transition). Maintain ATC assigned altitude. Expect filed altitude 10 minutes after departure.

TPAKK TRANSITION (INDIE8.TPAKK)



NOTE: Chart not to scale.

INDIE EIGHT DEPARTURE (RNAV)

(INDIE8.INDIE) 07OCT21

ANAHUAC, TEXAS
CHAMBERS COUNTY (T00)

SC-5, 22 FEB 2024 to 21 MAR 2024

SC-5, 22 FEB 2024 to 21 MAR 2024

KARRR SEVEN DEPARTURE (RNAV)
(KARRR7.KARRR) 29DEC22

CHAMBERS COUNTY (TMM)
ANAHUAC, TEXAS

CTAF
122.9
HOUSTON DEP CON
134.45 284.0

RNAV-1 DME/DME/IRU or GPS.

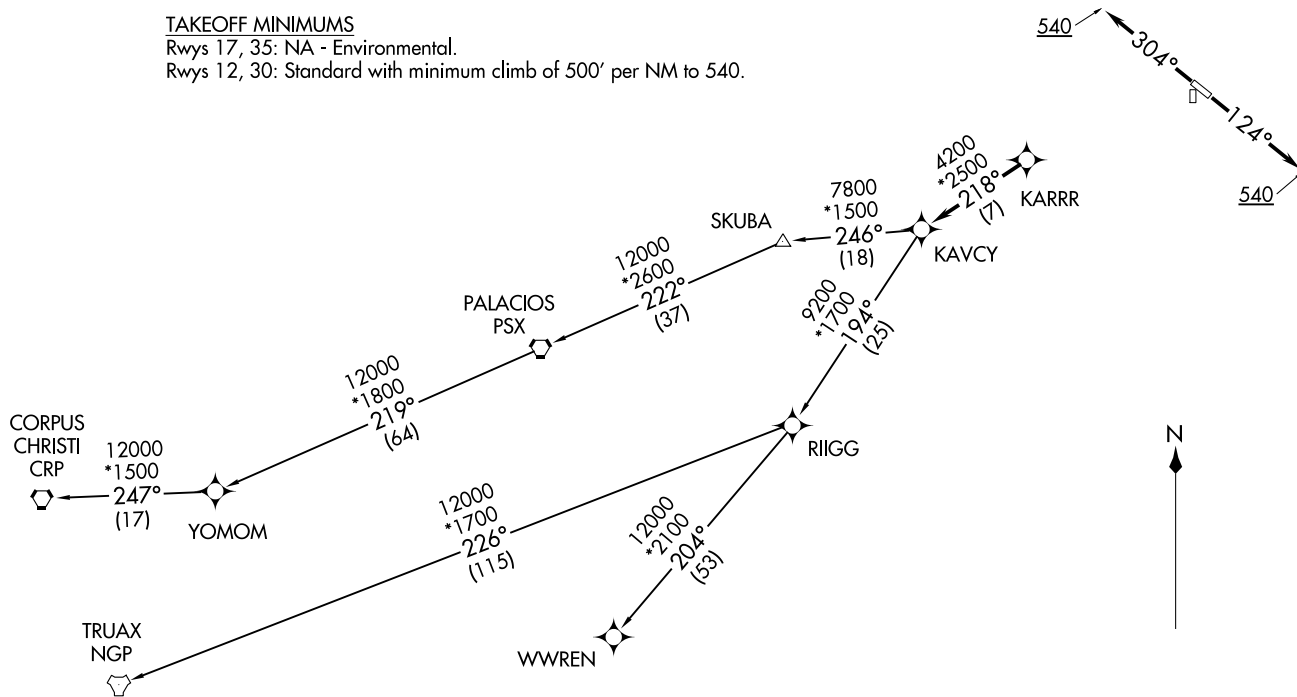
RADAR required.

TOP ALTITUDE:
ASSIGNED BY ATC

TAKEOFF MINIMUMS

Rwys 17, 35: NA - Environmental.

Rwys 12, 30: Standard with minimum climb of 500' per NM to 540.



(NARRATIVE ON FOLLOWING PAGE)

NOTE: Chart not to scale.

(KARRR7.KARRR) 22363
KARRR SEVEN DEPARTURE (RNAV)

AL-6395 (FAA)

CHAMBERS COUNTY (TMM)
ANAHUAC, TEXAS

KARRR SEVEN DEPARTURE (RNAV)



DEPARTURE ROUTE DESCRIPTION

TAKEOFF RUNWAY 12: Climb on heading 124° to 540, for RADAR vectors to KARRR, thence. . . .

TAKEOFF RUNWAY 30: Climb on heading 304° to 540, for RADAR vectors to KARRR, thence. . . .

. . . .on track 218° to KAVCY, then on (transition). Maintain ATC assigned altitude. Expect filed altitude 10 minutes after departure.

CORPUS CHRISTI TRANSITION (KARRR7.CRP)

PALACIOS TRANSITION (KARRR7.PSX)

TRUAX TRANSITION (KARRR7.NGP)

WWREN TRANSITION (KARRR7.WWREN)

YOMOM TRANSITION (KARRR7.YOMOM)

SC-5, 22 FEB 2024 to 21 MAR 2024

SC-5, 22 FEB 2024 to 21 MAR 2024

(LURIC8.LURIC) 21280

AL-6395 (FAA)

CHAMBERS COUNTY (T00)

LURIC EIGHT DEPARTURE (RNAV)

ANAHUAC, TEXAS

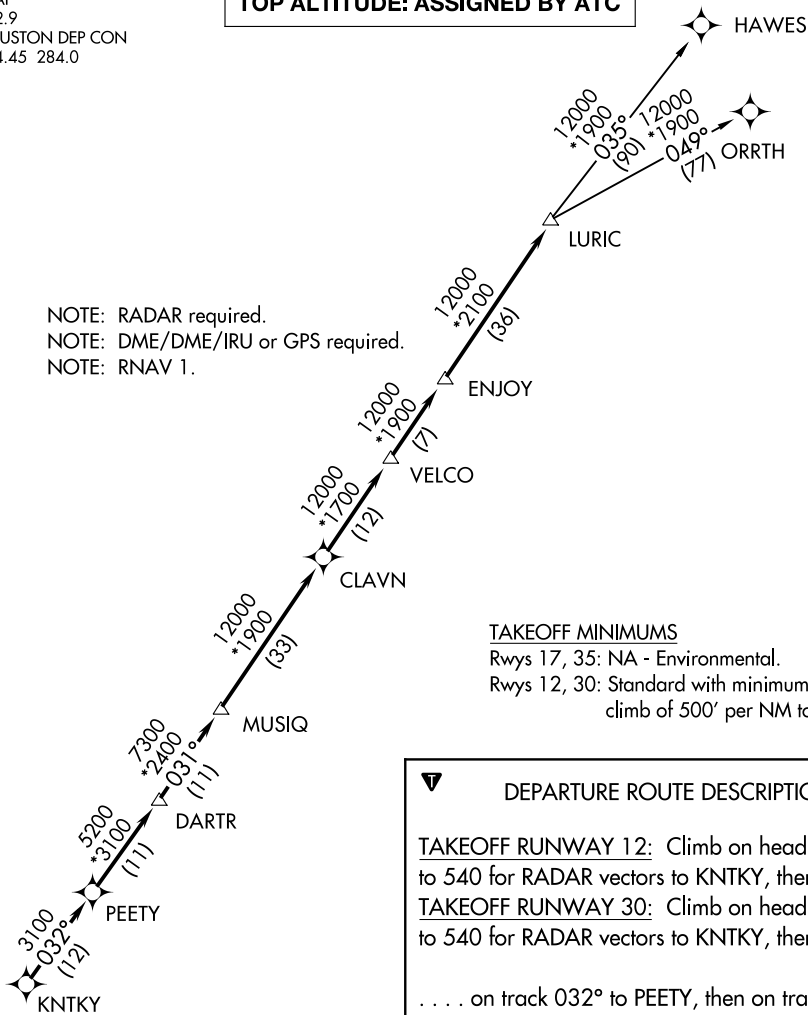
CTAF
122.9
HOUSTON DEP CON
134.45 284.0

TOP ALTITUDE: ASSIGNED BY ATC

NOTE: RADAR required.
NOTE: DME/DME/IRU or GPS required.
NOTE: RNAV 1.

TAKEOFF MINIMUMS

Rwys 17, 35: NA - Environmental.
Rwys 12, 30: Standard with minimum
climb of 500' per NM to 540.



DEPARTURE ROUTE DESCRIPTION

TAKEOFF RUNWAY 12: Climb on heading 124° to 540 for RADAR vectors to KNTKY, thence . . .

TAKEOFF RUNWAY 30: Climb on heading 304° to 540 for RADAR vectors to KNTKY, thence . . .

. . . on track 032° to PEETY, then on track 032° to DARTR, then on track 031° to MUSIQ, then on track 031° to CLAVN, then on track 031° to VELCO, then on track 031° to ENJOY, then on track 031° to LURIC, then on (transition). Maintain ATC assigned altitude. Expect filed altitude 10 minutes after departure.

HAWES TRANSITION (LURIC8.HAWES)
ORRTH TRANSITION (LURIC8.ORRTH)

NOTE: Chart not to scale.

LURIC EIGHT DEPARTURE (RNAV)
(LURIC8.LURIC) 07OCT21

ANAHUAC, TEXAS
CHAMBERS COUNTY (T00)

SC-5, 22 FEB 2024 to 21 MAR 2024

SC-5, 22 FEB 2024 to 21 MAR 2024

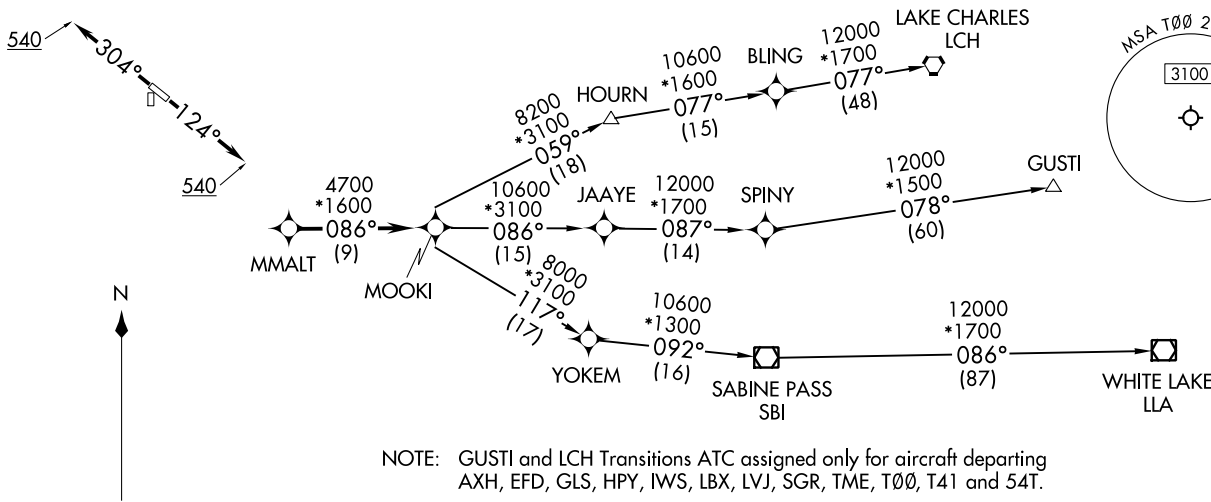
MMALT SEVEN DEPARTURE (RNAV)
(MMALT7.MMALT) 30NOV23

CHAMBERS COUNTY (TMM)
ANAHUAC, TEXAS

HOUSTON DEP CON
134.45 284.0
CTAF
122.9

RNAV 1 - DME/DME/IRU or GPS.
RADAR required.

TOP ALTITUDE:
ASSIGNED BY ATC



NOTE: GUSTI and LCH Transitions ATC assigned only for aircraft departing AXH, EFD, GLS, HPY, IWS, LBX, LVJ, SGR, TME, T00, T41 and 54T.



DEPARTURE ROUTE DESCRIPTION

TAKEOFF RUNWAY 12: Climb on heading 124° to 540, for RADAR vectors to MMALT, thence . . .
TAKEOFF RUNWAY 30: Climb on heading 304° to 540, for RADAR vectors to MMALT, thence . . .
 . . . on track 086° to MOOKI, then on (transition). Maintain ATC assigned altitude.
 Expect filed altitude 10 minutes after departure.

- GUSTI TRANSITION (MMALT7.GUSTI)
- LAKE CHARLES TRANSITION (MMALT7.LCH)
- WHITE LAKE TRANSITION (MMALT7.LLA)

NOTE: Chart not to scale.

(MMALT7.MMALT) 23334
MMALT SEVEN DEPARTURE (RNAV)

AL-6395 (FAA)

CHAMBERS COUNTY (TMM)
ANAHUAC, TEXAS

RADAR and DME required.

TOP ALTITUDE:
ASSIGNED BY ATC

TAKEOFF MINIMUMS
Rwys 17, 35: NA - Environmental.
Rwys 12, 30: Standard.



CLNC DEL
121.15
CTAF
122.9
HOUSTON DEP CON
134.45 284.0

FORT STOCKTON
116.9 FST
Chan 116
N30°57.13'
W102°58.54'
L-19, H-6

SAN ANTONIO
116.8 SAT
Chan 115
N29°38.64'-W98°27.68'
L-19, H-7

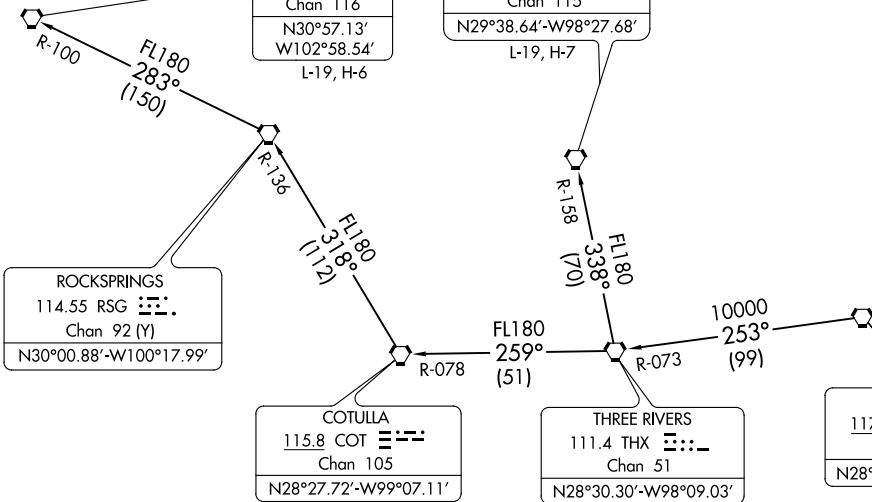
SKUBA
N29°11.72'
W95°47.47'

ROCKSPRINGS
114.55 RSG
Chan 92 (Y)
N30°00.88'-W100°17.99'

COTULLA
115.8 COT
Chan 105
N28°27.72'-W99°07.11'

THREE RIVERS
111.4 THX
Chan 51
N28°30.30'-W98°09.03'

PALACIOS
117.3 PSX
Chan 120
N28°45.87'-W96°18.37'



NOTE: Chart not to scale.

(NARRATIVE ON FOLLOWING PAGE)

PALACIOS THREE DEPARTURE
(PSX3.PSX) 03NOV22

CHAMBERS COUNTY (TMM)
ANAHUAC, TEXAS

PALACIOS THREE DEPARTURE
(PSX3.PSX) 22307

AL-6395 (FAA)

CHAMBERS COUNTY (TMM)
ANAHUAC, TEXAS

PALACIOS THREE DEPARTURE



DEPARTURE ROUTE DESCRIPTION

TAKEOFF ALL RUNWAYS: When entering controlled airspace, climb on assigned heading for RADAR vectors to SKUBA. Maintain ATC assigned altitude. Expect filed altitude 10 minutes after departure, thence

. . . . on PSX R-038 to PSX VORTAC.

FORT STOCKTON TRANSITION (PSX3.FST): From over PSX VORTAC on PSX R-253 and THX R-073 to THX VORTAC, then on THX R-259 and COT R-078 to COT VORTAC, then on COT R-318 and RSG R-136 to RSG VORTAC, then on RSG R-283 and FST R-100 to FST VORTAC.

SAN ANTONIO TRANSITION (PSX3.SAT): From over PSX VORTAC on PSX R-253 and THX R-073 to THX VORTAC, then on SAT R-158 to SAT VORTAC.

SC-5, 22 FEB 2024 to 21 MAR 2024

SC-5, 22 FEB 2024 to 21 MAR 2024

STRYA EIGHT DEPARTURE (RNAV)

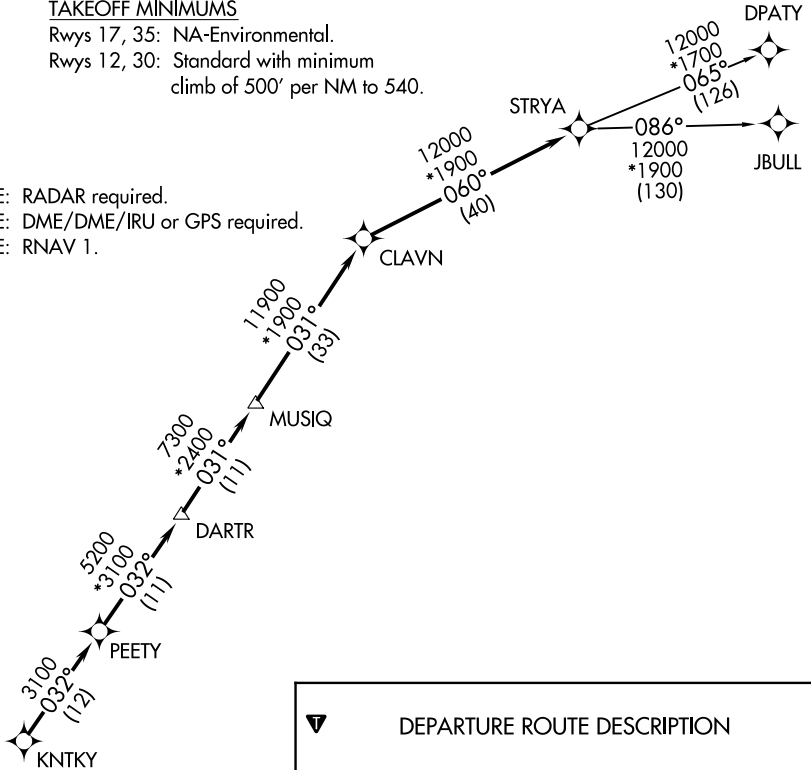
TOP ALTITUDE: ASSIGNED BY ATC

CTAF
122.9
HOUSTON DEP CON
134.45 284.0

TAKEOFF MINIMUMS

Rwys 17, 35: NA-Environmental.
Rwys 12, 30: Standard with minimum
climb of 500' per NM to 540.

NOTE: RADAR required.
NOTE: DME/DME/IRU or GPS required.
NOTE: RNAV 1.



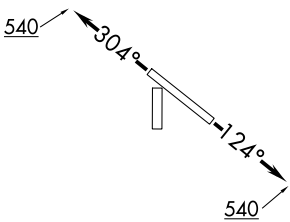
DEPARTURE ROUTE DESCRIPTION

TAKEOFF RUNWAY 12: Climb on heading 124° to 540 for RADAR vectors to KNTKY, thence. . . .

TAKEOFF RUNWAY 30: Climb on heading 304° to 540 for RADAR vectors to KNTKY, thence

. . . .on track 032° to PEETY, then on track 032° to DARTR, then on track 031° to MUSIQ, then on track 031° to CLAVN, then on track 060° to STRYA, then on (transition). Maintain ATC assigned altitude. Expect filed altitude 10 minutes after departure.

DPATY TRANSITION (STRYA8.DPATY)
JBULL TRANSITION (STRYA8.JBULL)



NOTE: Chart not to scale.

SC-5, 22 FEB 2024 to 21 MAR 2024

SC-5, 22 FEB 2024 to 21 MAR 2024

STRYA EIGHT DEPARTURE (RNAV)

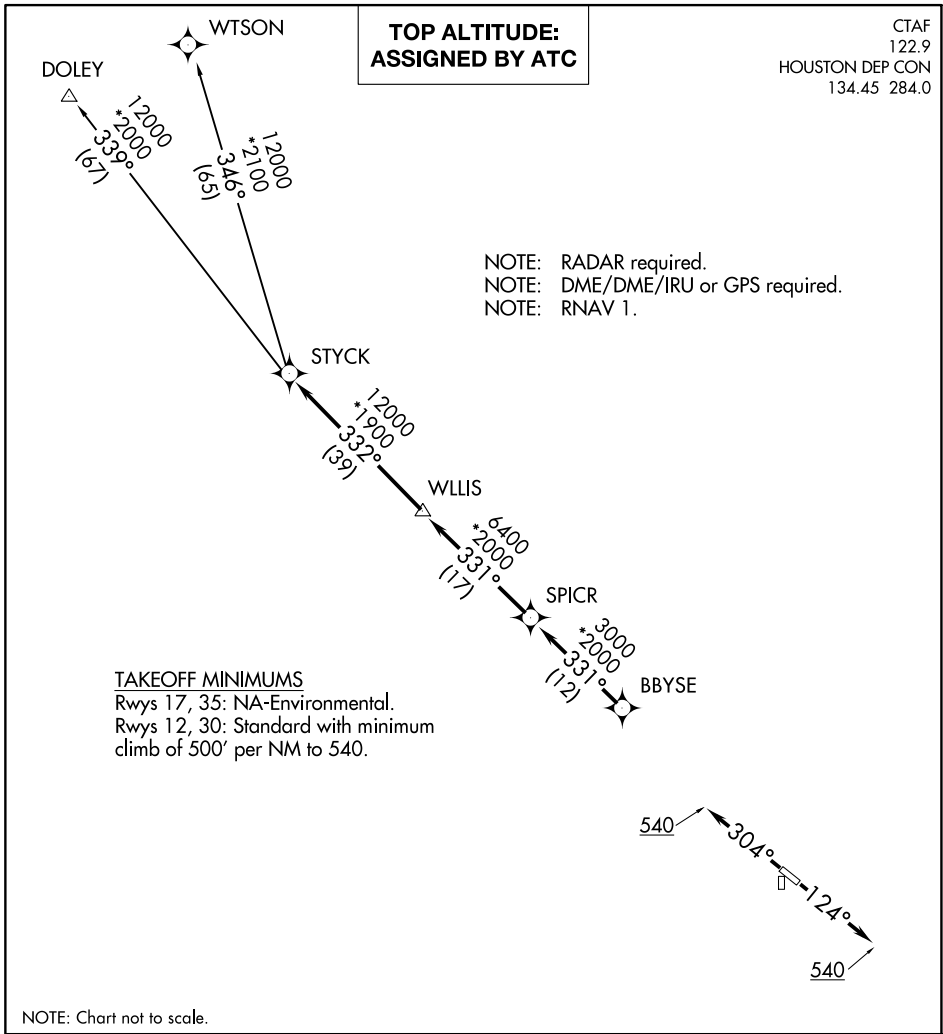
(STYCK8.STYCK) 21280

AL-6395 (FAA)

CHAMBERS COUNTY (T00)

STYCK EIGHT DEPARTURE (RNAV)

ANAHUAC, TEXAS



SC-5, 22 FEB 2024 to 21 MAR 2024

SC-5, 22 FEB 2024 to 21 MAR 2024

DEPARTURE ROUTE DESCRIPTION

TAKEOFF RUNWAY 12: Climb on heading 124° to 540 for RADAR vectors to BBYSE, thence. . .

TAKEOFF RUNWAY 30: Climb on heading 304° to 540 for RADAR vectors to BBYSE, thence. . .

. . . on track 331° to SPICR, then on track 331° to WLLIS, then on track 332° to STYCK, then on (transition). Maintain ATC assigned altitude. Expect filed altitude 10 minutes after departure.

DOLEY TRANSITION (STYCK8.DOLEY)
WTSON TRANSITION (STYCK8.WTSON)

STYCK EIGHT DEPARTURE (RNAV)

(STYCK8.STYCK) 07OCT21

ANAHUAC, TEXAS
CHAMBERS COUNTY (T00)

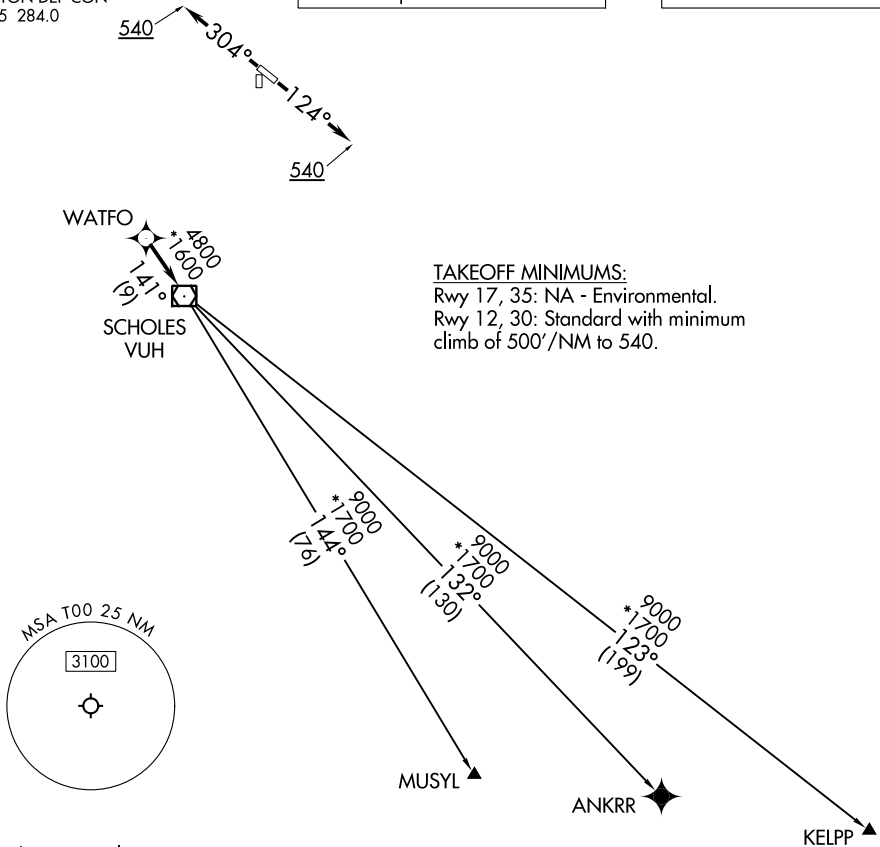
WATFO SIX DEPARTURE (RNAV)

CTAF
122.9
HOUSTON DEP CON
134.45 284.0

RNAV 1 - DME/DME/IRU or GPS.

RADAR required.

**TOP ALTITUDE:
ASSIGNED BY ATC**



TAKEOFF MINIMUMS:
Rwy 17, 35: NA - Environmental.
Rwy 12, 30: Standard with minimum
climb of 500' /NM to 540.

SC-5, 22 FEB 2024 to 21 MAR 2024

SC-5, 22 FEB 2024 to 21 MAR 2024

NOTE: Chart not to scale.



DEPARTURE ROUTE DESCRIPTION

TAKEOFF RUNWAY 12: Climb on heading 124° to 540, for RADAR vectors to WATFO, thence. . . .

TAKEOFF RUNWAY 30: Climb on heading 304° to 540, for RADAR vectors to WATFO, thence. . . .

. . . .on track 141° to VUH VOR/DME, then on (transition). Maintain ATC assigned altitude. Expect filed altitude 10 minutes after departure.

ANKRR TRANSITION (WATFO6.ANKRR)

KELPP TRANSITION (WATFO6.KELPP)

MUSYL TRANSITION (WATFO6.MUSYL)

WYLSN EIGHT DEPARTURE (RNAV)

CTAF
122.9
HOUSTON DEP CON
134.45 284.0

**TOP ALTITUDE:
ASSIGNED BY ATC**

NOTE: RADAR required.
NOTE: DME/DME/IRU or GPS required.
NOTE: RNAV 1.

TAKEOFF MINIMUMS

Rwy 17, 35: NA - Environmental.
Rwy 12, 30: Standard with minimum
climb of 500' per NM to 540.

DEPARTURE ROUTE DESCRIPTION

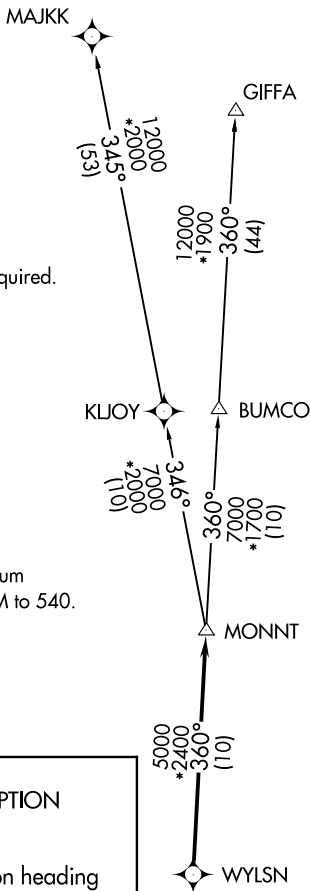
TAKEOFF RUNWAY 12: Climb on heading
124° to 540 for RADAR vectors to WYLSN,
thence. . . .

TAKEOFF RUNWAY 30: Climb on heading
304° to 540 for RADAR vectors to WYLSN,
thence. . . .

. . . .on track 360° to MONNT, then on
(transition). Maintain ATC assigned altitude.
Expect filed altitude 10 minutes after departure.

GIFFA TRANSITION (WYLSN8.GIFFA)

MAJJK TRANSITION (WYLSN8.MAJJK)



NOTE: Chart not to scale.

WYLSN EIGHT DEPARTURE (RNAV)