

HUDZY FOUR ARRIVAL
(HUDZY,HUDZY4) 100CT19

HUDZY FOUR ARRIVAL
(HUDZY,HUDZY4) 23054

AL-198 (FAA)

HOUSTON, TEXAS

HOUSTON APP CON
120.05 379.1
CXO ATIS
118.325
DWH ATIS
128.375
EFD ATIS
135.575 269.9
HOU D-ATIS
124.6
IAH D-ATIS
124.05
SGR ATIS *
118.125
TME ATIS
119.525

LUFKIN
112.1 LFK
Chan 58

SAWMILL
113.75 SWB
Chan 84 (Y)
N31°58.39-W92°40.63'
L-22, H-6

L-22, H-6

BRWCK
N30°35.23'
W93°42.36'

ALEXANDRIA
116.1 AEX
Chan 108
N31°15.40-W92°30.06'
L-21-22, H-6

VERTICAL NAVIGATION
PLANNING INFORMATION

WAPPL
N30°13.91'
W94°19.84'

CLEVELAND MUNI

CLWSN
N30°04.42'
W94°55.13'

LIBERTY MUNI

HUDZY
N30°06.21'
W94°48.53'
TURBOJETS:
Expect 14000 280K

LAKE CHARLES
113.4 LCH
Chan 81

SABINE PASS
115.4 SBI
Chan 101

CONROE/NORTH
HOUSTON RGNL

HUMBLE
116.6 IAH
Chan 113

SWWAA
N30°00.52'
W95°09.42'

DAVID WAYNE HOOKS MEML

GEORGE BUSH
INTCNTL/HOUSTON

WEST HOUSTON

HOUSTON EXEC

BAYTOWN

RWJ
AIRPARK

CHAMBERS
COUNTY

LA PORTE MUNI

WILLIAM P
HOBBY

ELLINGTON

SUGAR LAND RGNL

HOUSTON/SOUTHWEST

PEARLAND
RGNL

SCHOLES INTL
AT GALVESTON

TRINITY
114.75 MHF
Chan 94(Y)

HOUSTON, TEXAS



- NOTE: RADAR required.
- NOTE: For use by Turbojet and Turboprop aircraft capable of 280K or greater only.
- NOTE: DME/DME/IRU or GPS equipped aircraft must file the WAPPL (RNAV) STAR.
- NOTE: ATC assigned only for aircraft landing CXO, DWH, IAH, T78, and 6R3.

(NARRATIVE ON FOLLOWING PAGE) NOTE: Chart not to scale.

ARRIVAL ROUTE DESCRIPTION

ALEXANDRIA TRANSITION (AEX.HUDZY4): From over AEX VORTAC on AEX R-235 to WAPPL, then on IAH R-067 to HUDZY. Thence. . . .

SAWMILL TRANSITION (SWB.HUDZY4): From over SWB VOR/DME on SWB R-211 to BRWCK, then on AEX R-235 to WAPPL, then on IAH R-067 to HUDZY. Thence. . . .

. . . .from over HUDZY on IAH R-067 to CLWSN, then on IAH R-067 to SWWAA, then on heading 190°. Expect RADAR vectors to final approach course.

SC-5, 22 FEB 2024 to 21 MAR 2024

SC-5, 22 FEB 2024 to 21 MAR 2024

OHIO FOUR ARRIVAL
(OHIO.OHIO4) 22JUN17

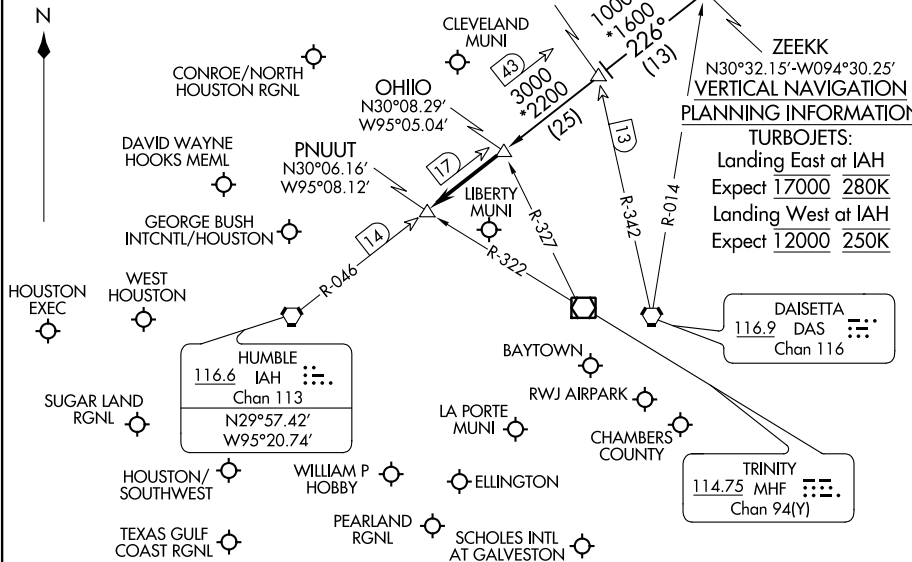
OHIO FOUR ARRIVAL
(OHIO.OHIO4) 23222

HOUSTON APP CON
120.05 379.1
CXO ATIS
118.325
DWH ATIS
128.375
EFD ATIS
135.575 269.9
HOU D-ATIS
124.6
IAH D-ATIS
124.05
SGR ATIS*
118.125
TME ATIS
119.525

NOTE: DME/DME/IRU or GPS equipped turbojet aircraft landing IAH must file the GESNR/ZEEKK or DOOBI/SKNRD (RNAV) STAR.

NOTE: ATC assigned only for airports other than KIAH, KDWH and KCXO, T78 and 6R3.

NOTE: Chart not to scale.



ARRIVAL ROUTE DESCRIPTION

ALEXANDRIA TRANSITION (AEX.OHIO4):
From over AEX VORTAC via AEX R-251 to LYMBO INT, then on IAH R-046 to OHIO INT. Thence . . .

LUFKIN TRANSITION (LFK.OHIO4):
From over LFK VORTAC on LFK R-159 to ZEEKK INT, then on IAH R-046 to OHIO INT. Thence . . .

GEORGE BUSH INT/CNTL AIRPORT /HOUSTON (IAH):
. . . from OHIO INT on IAH R-046 to PNUUT. Thence . . .
LANDING RUNWAYS 8L/R or 9:
. . . fly heading 265° for vectors to final approach course.

LANDING ALL OTHER RUNWAYS:
. . . expect vectors to final approach course at or prior to PNUUT.

FOR ALL OTHER AIRPORTS:
. . . from OHIO INT on IAH R-046 to PNUUT. Expect vectors to final approach course at or prior to PNUUT.

PLANNING INFORMATION

TURBOJETS:
Landing East at IAH
Expect 17000 280K
Landing West at IAH
Expect 12000 250K

HUMBLE
116.6 IAH
Chan 113
N29°57.42'
W95°20.74'

LUFKIN
112.1 LFK
Chan 58
N31°09.75'
W94°43.00'

ALEXANDRIA
116.1 AEX
Chan 108
N31°15.40'
W92°30.06'

DAISETTA
116.9 DAS
Chan 116

TRINITY
114.75 MHF
Chan 94(Y)

AL-5461 (FAA)

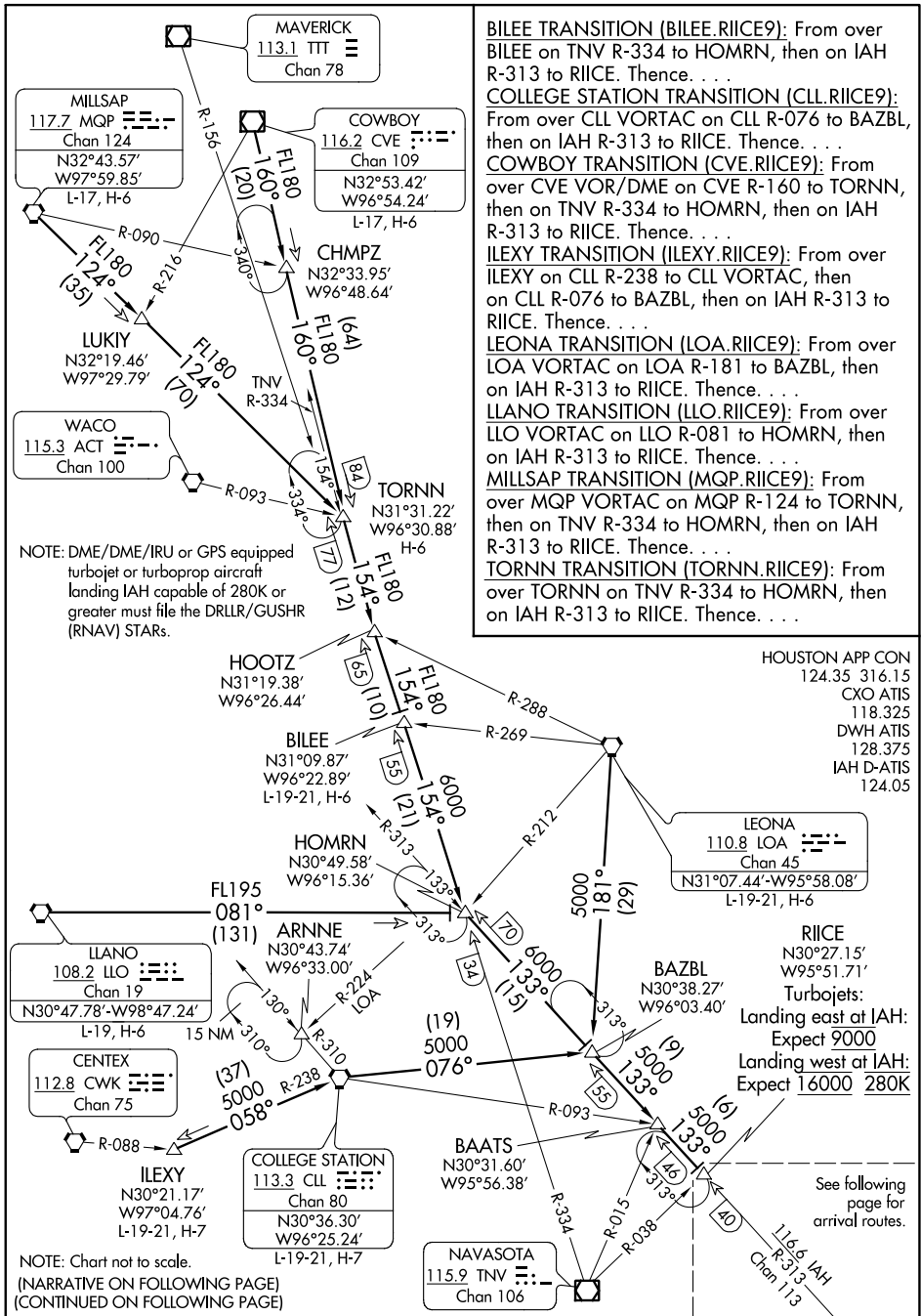
HOUSTON, TEXAS

HOUSTON, TEXAS

RIICE NINE ARRIVAL

Transition Routes

HOUSTON, TEXAS



SC-5, 22 FEB 2024 to 21 MAR 2024

SC-5, 22 FEB 2024 to 21 MAR 2024

RIICE NINE ARRIVAL

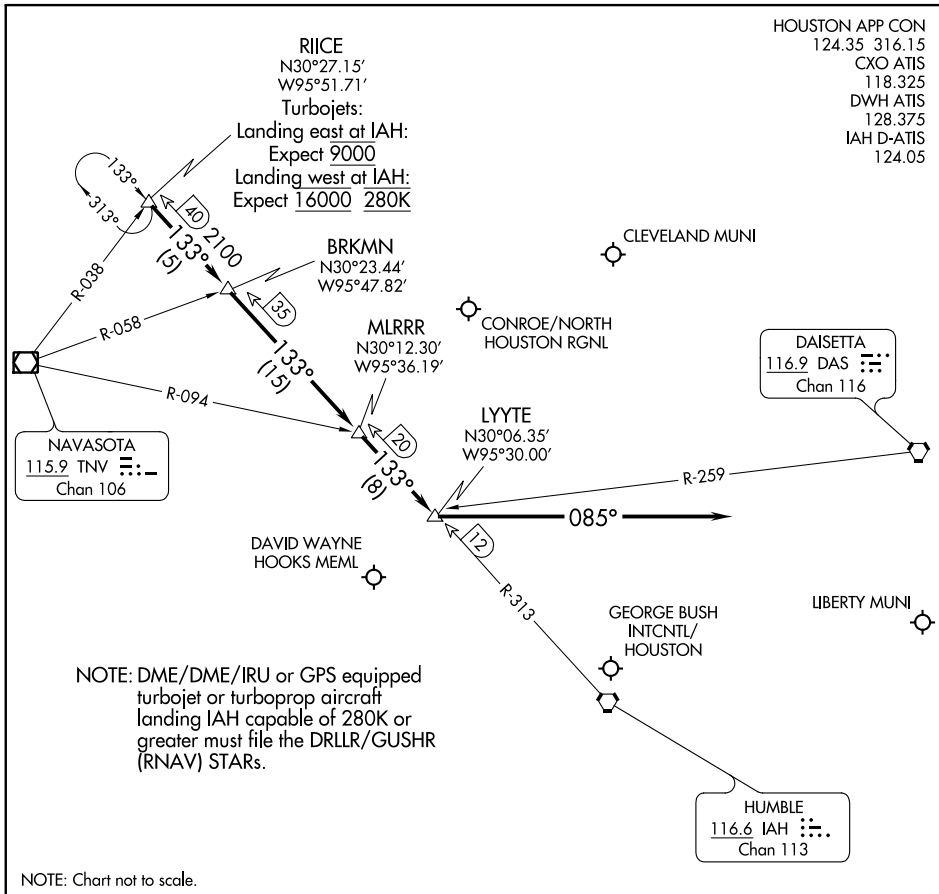
Transition Routes

HOUSTON, TEXAS

RIICE NINE ARRIVAL

Arrival Routes

HOUSTON, TEXAS



SC-5, 22 FEB 2024 to 21 MAR 2024

SC-5, 22 FEB 2024 to 21 MAR 2024

ARRIVAL ROUTE DESCRIPTION

GEORGE BUSH INTCNL/HOUSTON (IAH):

... From over RIICE on IAH R-313 to BRKMN, to MLRRR, to LYYTE.

LANDING RUNWAY 26L/R or 27:

... Fly heading 085° for vectors to final approach course.

LANDING ALL OTHER RUNWAYS:

... Expect vectors to final approach course at or prior to LYYTE.

FOR ALL OTHER AIRPORTS:

... From over RIICE on IAH R-313 to BRKMN, thence as depicted to LYYTE expect vectors to final approach course at or prior to LYYTE.

(WHAEL.PIEGY1) 22363

AL-5573 (FAA)

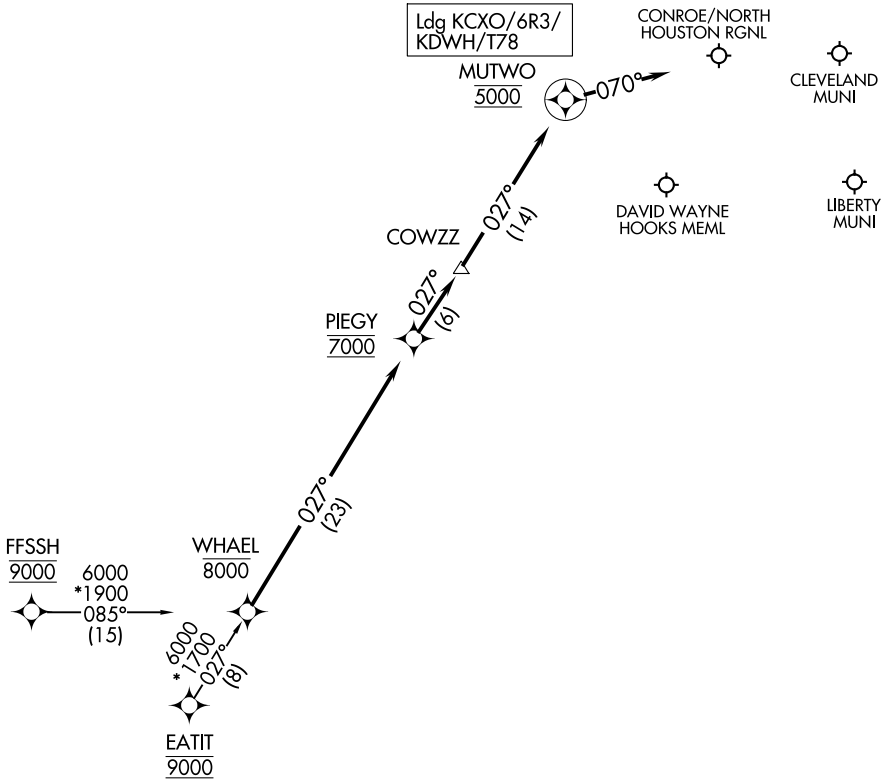
PIEGY ONE ARRIVAL (RNAV)

HOUSTON, TEXAS

HOUSTON APP CON
119.7 281.4
CXO ATIS
118.325
DWH ATIS
128.375

RNAV 1 - DME/DME/IRU or GPS.

RADAR required.



NOTE: Chart not to scale.

ARRIVAL ROUTE DESCRIPTION

EATIT TRANSITION (EATIT.PIEGY1)
FFSSH TRANSITION (FFSSH.PIEGY1)

LANDING ALL AIRPORTS: From WHAEL on track 027° to cross PIEGY at 7000, then on track 027° to COWZZ, then on track 027° to cross MUTWO at 5000, then on track 070°. Expect RADAR vectors to final approach course.

PIEGY ONE ARRIVAL (RNAV)

HOUSTON, TEXAS

(WHAEL.PIEGY1) 29DEC22

SC-5, 22 FEB 2024 to 21 MAR 2024

SC-5, 22 FEB 2024 to 21 MAR 2024