

MAYNR ONE DEPARTURE (RNAV)
(MAYNR1 .MAYNR) 19MAYZ2

MIAMI, FLORIDA
MIAMI EXEC (TMB)

ATIS
124.0
CLNC DEL
133.0
GND CON
121.7
TAMIAMI TOWER ★
118.9 (CTAF)
MIAMI DEP CON
125.5 354.1

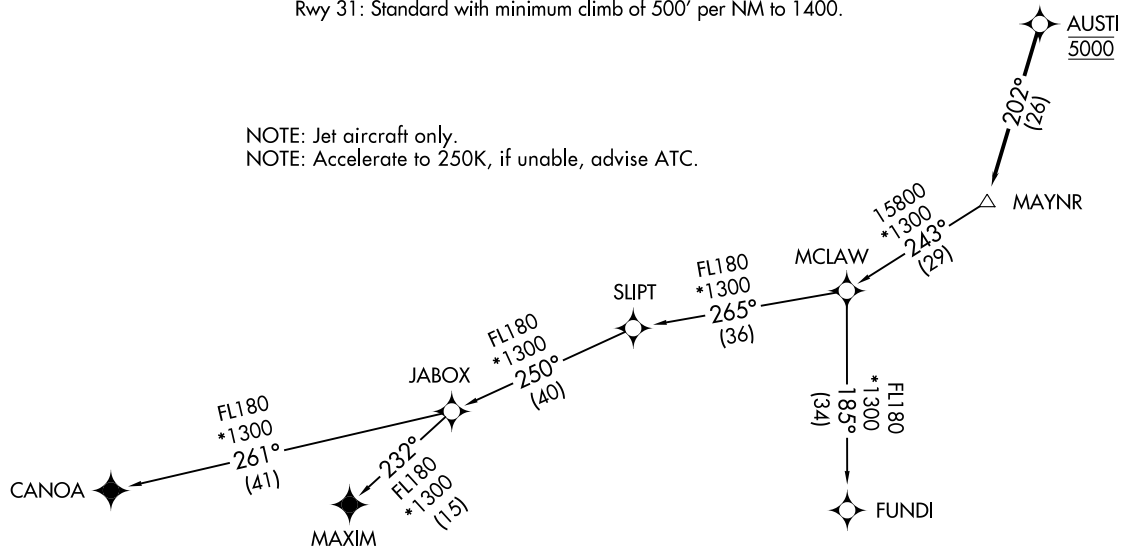
RNAV1 - DME/DME/IRU or GPS.
From SLIPT to MAXIM: RNAV 1- GPS.
From SLIPT to CANOA: RNAV 1- GPS.
RADAR required.

**TOP ALTITUDE:
ASSIGNED BY ATC**

TAKEOFF MINIMUMS

Rwy 9L: Standard with minimum climb of 500' per NM to 1300.
Rwy 9R: Standard with minimum climb of 500' per NM to 1500.
Rwy 13: Standard with minimum climb of 500' per NM to 1800.
Rwy 27L: Standard with minimum climb of 500' per NM to 1900.
Rwy 27R: Standard with minimum climb of 500' per NM to 1700.
Rwy 31: Standard with minimum climb of 500' per NM to 1400.

NOTE: Jet aircraft only.
NOTE: Accelerate to 250K, if unable, advise ATC.



NOTE: Chart not to scale.

(NARRATIVE ON FOLLOWING PAGE)

(MAYNR1 .MAYNR) 22139
MAYNR ONE DEPARTURE (RNAV)

MIAMI EXEC (TMB)
MIAMI, FLORIDA

MAYNR ONE DEPARTURE (RNAV)



DEPARTURE ROUTE DESCRIPTION

TAKEOFF RUNWAYS 9L/R, 13, 27L/R, 31: Climb on heading assigned by ATC for vectors to cross AUSTI at 5000, thence. . . .

. . . .on track 202° to MAYNR, then on assigned transition, maintain altitude as assigned by ATC, expect clearance to filed altitude within 10 minutes after departure.

CANOA TRANSITION (MAYNR1.CANOA)

FUNDI TRANSITION (MAYNR1.FUNDI)

MAXIM TRANSITION (MAYNR1.MAXIM)

SE-3, 22 FEB 2024 to 21 MAR 2024

SE-3, 22 FEB 2024 to 21 MAR 2024