

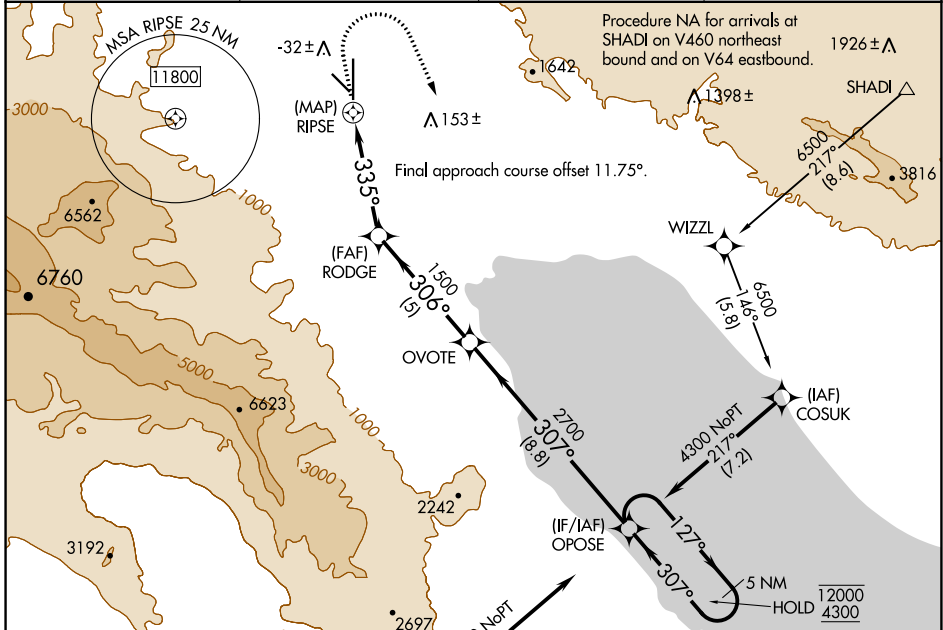
APP CRS	Rwy Idg	<b>8500</b>
<b>335°</b>	TDZE	<b>-128</b>
	Apt Elev	<b>-114</b>

# RNAV (GPS) RWY 35

JACQUELINE COCHRAN RGNL (TRM)

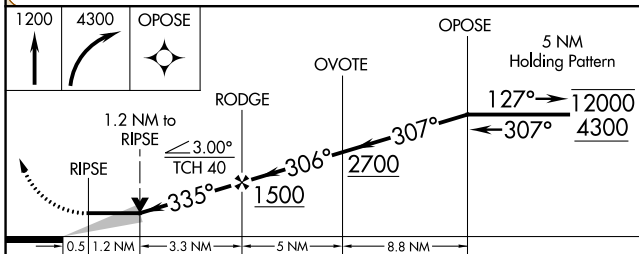
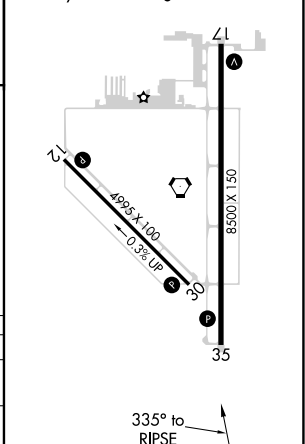
RNP APCH-GPS.		MISSED APPROACH: Climb to 1200 then climbing right turn to 4300 direct OPOSE and hold.	
---------------	--	--	--

ASOS <b>118.325</b>	SOCAL APP CON <b>135.275 251.1</b>	CLNC DEL <b>120.225</b>	UNICOM <b>123.0 (CTAF) 0</b>
------------------------	---------------------------------------	----------------------------	---------------------------------



ELEV -114	TDZE -128
-----------	-----------

MIRL Rwy 12-30 and 17-35  
REIL Rwy 17 and 35



CATEGORY	A	B	C	D
LNVA MDA	440-1 568 (600-1)		940-3 1068 (1100-3)	
<b>C</b> CIRCLING	440-1 554 (600-1)		940-3 1054 (1100-3)	

SW-3, 22 FEB 2024 to 21 MAR 2024

SW-3, 22 FEB 2024 to 21 MAR 2024