

(SVALY1.FFU) 22083

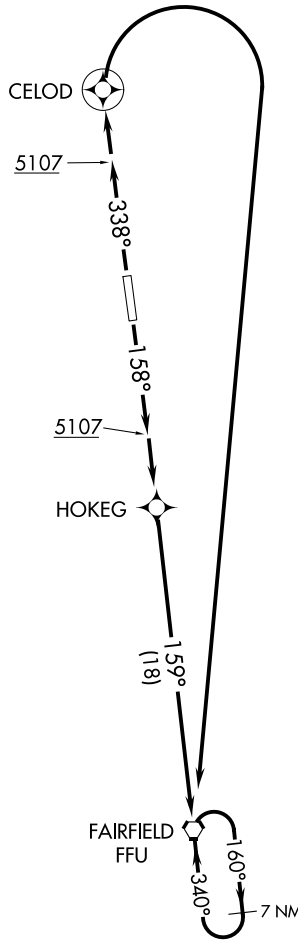
# SOUTH VALLEY ONE DEPARTURE (RNAV)

AL-366 (FAA)

SOUTH VALLEY RGNL (U42)  
SALT LAKE CITY, UTAH

SALT LAKE CITY DEP CON  
120.9 322.3  
CLNC DEL  
127.0  
UNICOM  
122.7 (CTAF)  
AWOS-3  
134.425

**TOP ALTITUDE:  
9000**



NOTE: RNAV 1.  
NOTE: GPS required.

### TAKEOFF MINIMUMS

Rwy 16: Standard with minimum climb of 300' per NM to 7800.  
Rwy 34: Standard with minimum climb of 495' per NM to 9000.

NOTE: Chart not to scale.



### DEPARTURE ROUTE DESCRIPTION

TAKEOFF RUNWAY 16: Climb heading 158° to 5107, then climb to 9000 direct HOKEG, and on track 159° to FFU VORTAC and hold, thence. . . .

TAKEOFF RUNWAY 34: Climb heading 338° to 5107, then climb to 9000 direct CELOD, and right turn direct FFU VORTAC and hold, thence. . . .

. . . maintain 9000. Expect further clearance to filed altitude and route within 10 minutes after departure.

# SOUTH VALLEY ONE DEPARTURE (RNAV)

(SVALY1.FFU) 01FEB18

SALT LAKE CITY, UTAH  
SOUTH VALLEY RGNL (U42)

SW-4, 22 FEB 2024 to 21 MAR 2024

SW-4, 22 FEB 2024 to 21 MAR 2024