

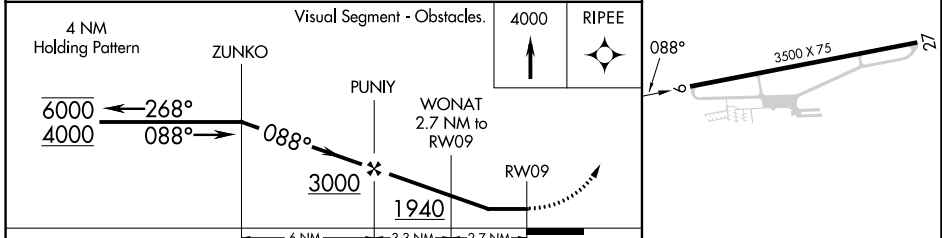
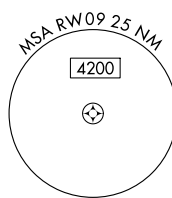
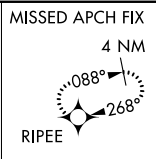
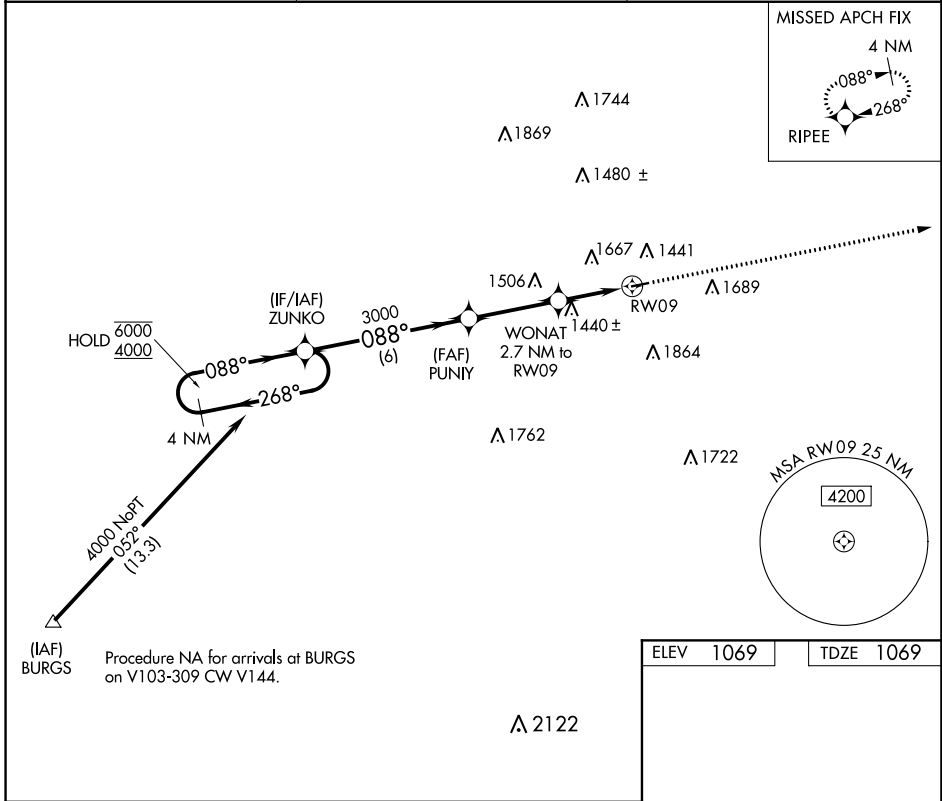
APP CRS	Rwy Idg	<b>3500</b>
<b>088°</b>	TDZE	<b>1069</b>
	Apt Elev	<b>1069</b>

# RNAV (GPS) Z RWY 9

GREENE COUNTY (WAY)

RNP APCH.	<p><b>▽</b> Circling Rwy 27 NA at night. Rwy 9 helicopter visibility reduction below 1 SM NA. Use Washington altimeter setting.</p> <p><b>▲</b> NA</p>	<p>MISSED APPROACH: Climb to 4000 direct RIPEE and hold, continue climb-in-hold to 4000.</p>
-----------	--	--

AFJ AWOS-3PT <b>119.175</b>	CLARKSBURG APP CON* <b>121.15 284.65</b>	UNICOM <b>122.8 (CTAF) 0</b>
--------------------------------	---	---------------------------------



CATEGORY	A	B	C	D
LNVA MDA	1760-1	691 (700-1)	1760-2 691 (700-2)	NA
<b>C</b> CIRCLING	1880-1¼ 811 (900-1¼)	2220-1½ 1151 (1200-1½)	2280-3 1211 (1300-3)	NA

NE-4, 22 FEB 2024 to 21 MAR 2024

NE-4, 22 FEB 2024 to 21 MAR 2024