

WAAS CH 42825 W10A	APP CRS 096°	Rwy Idg TDZE Apt Elev	3000 7 7
--	------------------------	-----------------------------	-------------------------------------

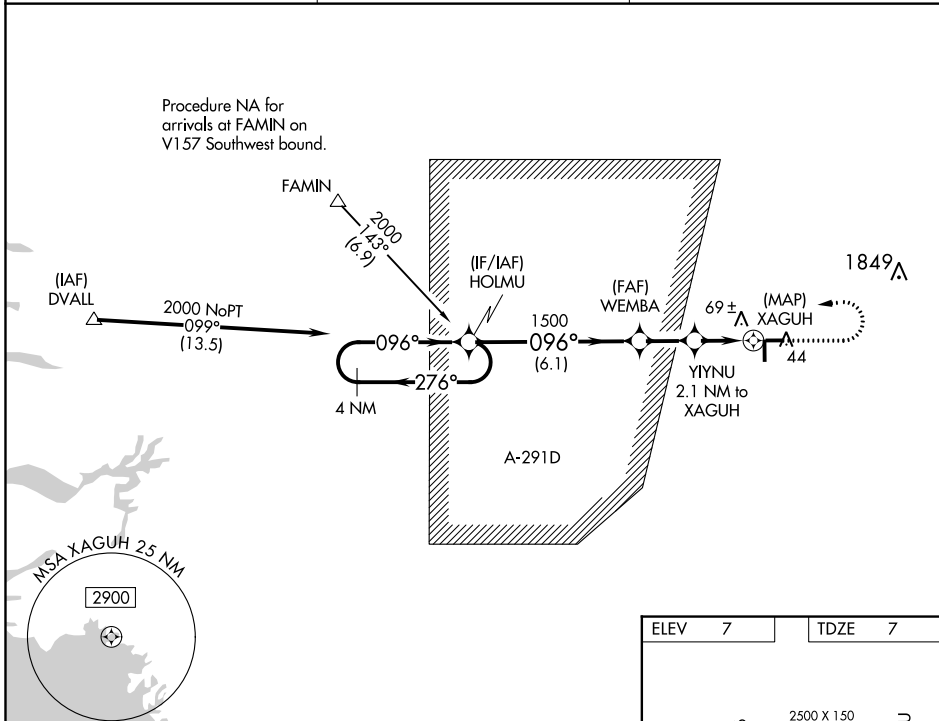
RNAV (GPS) RWY 10

MIAMI HOMESTEAD GENERAL AVIATION (X51)

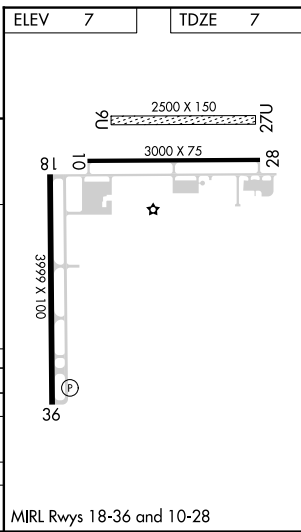
NA Baro-VNAV NA when using Miami Executive altimeter setting. For uncompensated Baro-VNAV systems, LNAV/VNAV NA below -15°C (5°F) or above 54°C (130°F). DME/DME RNP-0.3 NA. When local altimeter setting not received, use Miami Executive altimeter setting: increase LPV DA to 284; increase LNAV/VNAV DA to 284; increase all MDA 40 feet.

MISSED APPROACH: Climb to 500 then climbing left turn to 2000 direct HOLMU and hold.

AWOS-3 118.375	MIAMI APP CON 125.5 354.1	UNICOM 122.8 (CTAF)
--------------------------	-------------------------------------	-------------------------------



4 NM Holding Pattern	HOLMU	VGSI and descent angles not coincident.	500	2000	HOLMU
	2000 ← 276° / 096° →	WEMBA	↑	↻	*LNAV only.
GP 3.00° TCH 40	1500	YIYNU 2.1 NM to XAGUH	*860		
	← 6.1 NM	← 2 NM	← 2.1 NM	← 0.5 NM	
CATEGORY	A	B	C	D	
LPV DA	257-7/8	250 (300-7/8)			NA
LNAV/VNAV DA	257-7/8	250 (300-7/8)			NA
LNAV MDA	320-1	313 (400-1)			NA
CIRCLING	380-1 373 (400-1)	460-1 453 (500-1)			NA



SE-3, 25 MAR 2021 to 22 APR 2021

SE-3, 25 MAR 2021 to 22 APR 2021

